

## Product datasheet for RC225508

### PPP6C (NM\_001123355) Human Tagged ORF Clone

#### Product data:

Product Type:	Expression Plasmids
Product Name:	PPP6C (NM_001123355) Human Tagged ORF Clone
Tag:	Myc-DDK
Symbol:	PPP6C
Synonyms:	PP6; PP6C
Mammalian Cell Selection:	Neomycin
Vector:	pCMV6-Entry (PS100001)
E. coli Selection:	Kanamycin (25 ug/mL)
ORF Nucleotide Sequence:	>RC225508 representing NM_001123355 Red=Cloning site Blue=ORF Green=Tags(s)

TTTTGTAATACGACTCACTATAGGGCGGCCGGAATTCGTCGACTGGATCCGGTACCGAGGAGATCTGCC  
GCC**CGATCGCC**

ATGGCGCCGCTAGACCTGGACAAGTATGTGAAATAGCGCGGCTGTGCAAGTACCTGCCAGAGAACGACC  
TGAAGGTGAGCCCTATTTGCGGGCTCGCCCTTCCGGCTGTGGGGCGCCCGCCGGCCCTTCCCTTC  
TCCAGGACCCCGCCGGTATTTCAATTTCTTCGTTTTCTAAAGGAGCGGCTATGTGACTACGTTTGTGAC  
CTCCTCTTAGAAGAGTCAAATGTTCAAGCAGTATCAACACAGTAAACAGTGTGGAGATATCCATGGAC  
AGTTTTATGACCTTTGTGAAGTTCAGAACTGGAGGTCAGGTTCTGACACAACTACATATTTATGGG  
TGATTTGTAGACAGAGTTACTATAGTTTGGAGACCTTCACTTACCTTCTTGCATTAAGGCTAAATGG  
CCTGATCGTATTACACTTTTGCAGGAAATCATGAGAGTAGACAGATAACACAGGCTATGGATTTTATG  
ATGAGTGCCAAACCAATATGGAATGCTAATGCCTGGAGATACTGTACCAAGTTTTTGCATGCTCAC  
AGTAGCAGCTTAAATAGATGAGCAGATTTGTGTGCCATGGTGGTTTATCTCCTGATATCAAAACACTG  
GATCAAATTCGAACCATCGAACGGAATCAGGAAATTCCTATAAAGGAGCATTGTGTGATCTGGTTTGGT  
CAGATCCTGAAGATGTGGATACCTGGGCTATCAGTCCCGAGGAGCAGGTTGGCTTTTGGAGCAAAGGT  
CACAAATGAGTTTGTTCATATCAACAACCTAAAACCTCATCTGCAGAGCACATCACTAGTGCACGAAAGGC  
TATAAATTTATGTTTGTGAGAAGCTGGTGCAGTATGGTCTGCTCAATTAATCTGCTATCGTTGTGGAA  
ATATTGCTTCGATCATGGTCTTCAAAGATGTAATAACAAGAGAACCAAAGTTATTCCGGGCAGTTCAGAA  
TTCAGAACGTGTTATTCTCCAGAACGACAACGCCATATTTCTT

**ACGCGT**ACGCGGCCGCTCGAGCAGAAACTCATCTCAGAAGAGGATCTGGCAGCAAATGATATCCTGGATT  
ACAAGGATGACGACGATAAGGTTTAA



[View online »](#)



**Reconstitution Method:**

1. Centrifuge at 5,000xg for 5min.
2. Carefully open the tube and add 100ul of sterile water to dissolve the DNA.
3. Close the tube and incubate for 10 minutes at room temperature.
4. Briefly vortex the tube and then do a quick spin (less than 5000xg) to concentrate the liquid at the bottom.
5. Store the suspended plasmid at -20°C. The DNA is stable for at least one year from date of shipping when stored at -20°C.

**RefSeq:** [NM\\_001123355.1](#), [NP\\_001116827.1](#)

**RefSeq ORF:** 1029 bp

**Locus ID:** 5537

**UniProt ID:** [O00743](#)

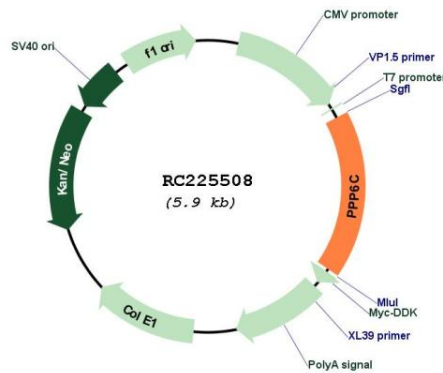
**Cytogenetics:** 9q33.3

**Protein Families:** Druggable Genome, Phosphatase

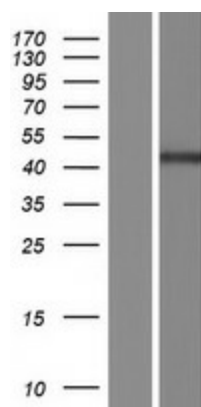
**MW:** 38.8 kDa

**Gene Summary:** This gene encodes the catalytic subunit of protein phosphatase, a component of a signaling pathway regulating cell cycle progression. Splice variants encoding different protein isoforms exist. The pseudogene of this gene is located on chromosome X. [provided by RefSeq, Jul 2008]

**Product images:**



Circular map for RC225508



Western blot validation of overexpression lysate (Cat# [LY426607]) using anti-DDK antibody (Cat# [TA50011-100]). Left: Cell lysates from untransfected HEK293T cells; Right: Cell lysates from HEK293T cells transfected with RC225508 using transfection reagent MegaTran 2.0 (Cat# [TT210002]).