

Product datasheet for RC225507

SIRPB2 (NM_001122962) Human Tagged ORF Clone

Product data:

Product Type:	Expression Plasmids
Product Name:	SIRPB2 (NM_001122962) Human Tagged ORF Clone
Tag:	Myc-DDK
Symbol:	SIRPB2
Synonyms:	dj776F14.2; PTPN1L; PTPNS1L3
Mammalian Cell Selection:	Neomycin
Vector:	pCMV6-Entry (PS100001)
E. coli Selection:	Kanamycin (25 ug/mL)
ORF Nucleotide Sequence:	>RC225507 representing NM_001122962 Red=Cloning site Blue=ORF Green=Tags(s)

TTTTGTAATACGACTCACTATAGGGCGGCCGGAATTCGTCGACTGGATCCGGTACCGAGGAGATCTGCC
GCC**CGATCGCC**

ATGTGCTCCACGATGTCGGCCCCACCTGCCTGGCCCACTTGCTCCCTGCTTCTGCTGCTGGCACTGG
TCCTTGTCCTCAGATGCCTCTGGGCAGAGCAGCAGGAATGACTGGCAGGTGCTACAGCCCAGGGCCC
CATGCTGGTGGCAGAAGGTGAGACACTTCTACTGAGGTGTATGGTGGTGGCTCCTGCACATGATGGTATG
ATAAAATGGGTGAAGGTGAGCACTCAGGACCAACAGGAAATTTAACTTTAAACGTGGCTCCTTCCCTG
GGTAATGCCCATGATCCAACGGACATCAGAACCCTGAATTGTGATTATCCATCTATATCCACAATGT
CACCAGGGAGCACACTGGAACCTACCCTGTGTGAGGTTTGTGATGGTTGAGTGAACACTCAGAAATGAAA
TCGGATGAAGGCACCTCAGTGCTTGTGAAGGGAGCTGGGACCCTGAACCAGACCTGTGGATCATCCAGC
CCCAGGAATTGGTGTGGGGACCACTGGAGACACTGTCTTTCTGAACTGCACAGTGTGGAGACGGTCC
CCCTGGACCCATCAGGTGGTCCAGGGAGCTGGTCTGAGCCGGGAGGCCATTTACAACCTTGGAGGCATC
TCCCACCCCAAGGAGACAGCGGTGCAGGCCTCAAACAATGACTTCAGCATTCTTCTGCAAAACGTCTCCA
GTGAGGATGCAGGCACCTATTACTGTGTAAGTTTCAGAGGAAACCAACAGGCAATACCTGTCTGGACA
GGCACCAGCCTGAAAGTAAAGCAAAATCTACCTCTTCAAAGAGGCAGAATTCACCAGTGAACCTGCA
ACTGAGATGTCTCAAACAGGCCTCCTGGTTGTGTTTCGCACCTGTGGTCTGGGGCTGAAGGCAATTACCT
TGGCTGCACTCCTACTGGCCCTGGCTACCTCTCGGAGGAGCCCTGGGCAAGAAGATGTCAAGACCACAGG
CCCAGCAGGAGCCATGAACACCTTAGCATGGAGCAAGGGTCAAGAG

ACGCGTACGCGGCCGCTCGAGCAGAAACTCATCTCAGAAGAGGATCTGGCAGCAATGATATCCTGGATT
ACAAGGATGACGACGATAAGGTTTAA



[View online »](#)

Protein Sequence: >RC225507 representing NM_001122962
Red=Cloning site Green=Tags(s)

MCSTMSAPTCLAHLPPCFLLLALVLPDASGQSSRNDWQVLQPEGPMLVAEGETLLLRCMVVGSCTDGM
 IKWVKVSTQDQQEIYNFKRGSFPGVMPMIQRTSEPLNCDYSIYIHNVTREHTGTYHCVRFDGLSEHSEMK
 SDEGTSVLVKGAGDPEPDLWIIQPQELVLGTTGDTVFLNCTVLGDGPPGPIRWFQAGLSREAIYNFGGI
 SHPKETA VQASNNDFSILLQNVSE DAGTY YCVKFQRKPNRQYLSGQGTSLKVKAKSTSSKEAFTSEPA
 TEMSPTGLLVVFA PVVLGLKAITLAALLLALATSRRSPGQEDVKTTPAGAMNTLAWSKGQE

TRTRPLEQKLISEEDLAANDILDYKDDDDKV

Chromatograms: https://cdn.origene.com/chromatograms/mk8006_b08.zip

Restriction Sites: SgfI-MluI

Cloning Scheme:

Cloning sites used for ORF Shuttling:



* The last codon before the Stop codon of the ORF

ACCN: NM_001122962

ORF Size: 1026 bp

OTI Disclaimer: The molecular sequence of this clone aligns with the gene accession number as a point of reference only. However, individual transcript sequences of the same gene can differ through naturally occurring variations (e.g. polymorphisms), each with its own valid existence. This clone is substantially in agreement with the reference, but a complete review of all prevailing variants is recommended prior to use. [More info](#)

OTI Annotation: This clone was engineered to express the complete ORF with an expression tag. Expression varies depending on the nature of the gene.

Components: The ORF clone is ion-exchange column purified and shipped in a 2D barcoded Matrix tube containing 10ug of transfection-ready, dried plasmid DNA (reconstitute with 100 ul of water).

Reconstitution Method:

1. Centrifuge at 5,000xg for 5min.
2. Carefully open the tube and add 100ul of sterile water to dissolve the DNA.
3. Close the tube and incubate for 10 minutes at room temperature.
4. Briefly vortex the tube and then do a quick spin (less than 5000xg) to concentrate the liquid at the bottom.
5. Store the suspended plasmid at -20°C. The DNA is stable for at least one year from date of shipping when stored at -20°C.

RefSeq: [NM_001122962.2](#)

RefSeq ORF: 1029 bp

Locus ID: 284759

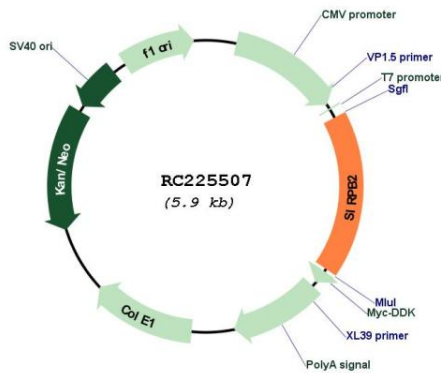
UniProt ID: [Q5JXA9](#)

Cytogenetics: 20p13

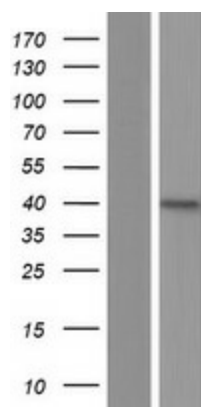
Protein Families: Transmembrane

MW: 36.8 kDa

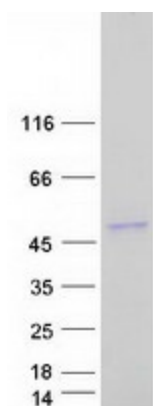
Product images:



Circular map for RC225507



Western blot validation of overexpression lysate (Cat# [LY426589]) using anti-DDK antibody (Cat# [TA50011-100]). Left: Cell lysates from untransfected HEK293T cells; Right: Cell lysates from HEK293T cells transfected with RC225507 using transfection reagent MegaTran 2.0 (Cat# [TT210002]).



Coomassie blue staining of purified SIRPB2 protein (Cat# [TP325507]). The protein was produced from HEK293T cells transfected with SIRPB2 cDNA clone (Cat# RC225507) using MegaTran 2.0 (Cat# [TT210002]).