

Product datasheet for **RC225503**

PLCXD2 (NM_001134478) Human Tagged ORF Clone

Product data:

Product Type: Expression Plasmids
Product Name: PLCXD2 (NM_001134478) Human Tagged ORF Clone
Tag: Myc-DDK
Symbol: PLCXD2
Synonyms: FLJ31579; phosphatidylinositol-specific phospholipase C, X domain containing 2
Mammalian Cell Selection: Neomycin
Vector: pCMV6-Entry (PS100001)
E. coli Selection: Kanamycin (25 ug/mL)
ORF Nucleotide Sequence: >RC225503 representing NM_001134478
Red=Cloning site Blue=ORF Green=Tags(s)

TTTTGTAATACGACTCACTATAGGGCGGCCGGAATTCGTCGACTGGATCCGGTACCGAGGAGATCTGCC
GCC**CGGATCGCC**

ATGCTAGCAGTTAGGAAGGCCAGGAGGAACTCAGGATGGGGACCATCTGCTCCCCAACCCAGCGGGA
CAAAGACATCATCGGAGGTCTGCAATGCCGACTGGATGGCCTCGCTCCCCCTCACCTCCACAACCTCCC
CCTTTCCAATCTGGCAATCCCAGGCTCACATGATTCATTAGCTACTGGTGGATGAAAAGTCCCAGTG
GGGCTGACCAAACCAAGCTATCAAACGCTCGCCAGGATCTCCTTGGTGAAGAAGCTAATGAAGAAGT
GGTCTGTGACTCAGAACCTGACATTTGAGAAGCTGGAAGCTGGGATCCGCTACTTTGACCTGCGTGT
GTCTTCCAAACAGGGGATGCCGACCAGGAGATCTACTTCATCCATGGGCTTTTGGCATCAAGGTCTGG
GATGGGCTGATGGAAATTGACTCGTTTCTACACAGCACCCCCAGGAGATTATCTTCTGGATTTCAACC
ACTTCTATGCCATGGATGAGACCATCACAAATGCCTGGTTCTGCGGATCCAGGAGGCCCTTTGAAACAA
GCTGTGCCAGCCTGCAGTGTGGAAAGTTTACGCTGCGAACTCTGTGGGAGAAGAAGTCCAGGTTCTT
ATTTTCTACCACTGTCCCTTCTACAAGCAGTACCCTTCTGTGGCCAGGAAAGAAGATTCCAGCGCCCT
GGGCAAACACCACAAGTGTGCGCAAATAATCCTTCTTGGAGACCACTCTGAGTGAGCGGGCCTCAGC
GGGCTCCTTCCATGTCTCCCAAGCGATCCTCACCCAGAGTGAAGACCATTGCCCGGGCTTGGTTGGG
GGCCTCAAGAACACGCTGGTTCATAGGAATCTTCTGCCATCTGGACTGGGTGAAAACCTCAGAAGCCTG
GAGCCATGGGTGTCAACATCATCATCTGACTTCGTGGACCTGGTGGACTTTGCTGCGACTGTCATCAA
GTTGAATGACCTCCTACAGGAGGACACAGCTCTGGCTAAATGC

ACGCGTACGCGGCCGCTCGAGCAGAACTCATCTCAGAAGAGGATCTGGCAGCAAATGATATCCTGGATT
ACAAGGATGACGACGATAAGGTTTAA



[View online »](#)

Protein Sequence: >RC225503 representing NM_001134478
 Red=Cloning site Green=Tags(s)

MLAVRKARRKLRMGITICSPNPSGKTSSSEVCNADWMASLPPHLHNLPLSNLAIPGSHDSFSYWVDEKSPV
 GPDQTQAIKRLARISLVKMLMKKWSVTQNLTFREQLEAGIRYFDLRVSSKPGDADQEIYFIHGLFGIKVW
 DGLMEIDSFLTQHPQEIIFLDFNHFYAMDETHHKCLVLRIQEAFGNKLCPCACSVESLTLRTLWEKNCQVL
 IFYHCPFYKQYPFLWPGKKIPAPWANTTSVRKLIILFLETTLSERASRGSFHVSQAILTPRVKTIARGLVG
 GLKNTLVHRNLPAILDWVKTQKPGAMGVNIITSDFVLDVFAATVIKLNLDLLQEDTALAKC

TRTRPLEQKLISEEDLAANDILDYKDDDDKV

Chromatograms: https://cdn.origene.com/chromatograms/mk8053_d09.zip

Restriction Sites: SgfI-MluI

Cloning Scheme:

Cloning sites used for ORF Shuttling:



* The last codon before the Stop codon of the ORF

ACCN: NM_001134478

ORF Size: 1023 bp

OTI Disclaimer: The molecular sequence of this clone aligns with the gene accession number as a point of reference only. However, individual transcript sequences of the same gene can differ through naturally occurring variations (e.g. polymorphisms), each with its own valid existence. This clone is substantially in agreement with the reference, but a complete review of all prevailing variants is recommended prior to use. [More info](#)

OTI Annotation: This clone was engineered to express the complete ORF with an expression tag. Expression varies depending on the nature of the gene.

Components: The ORF clone is ion-exchange column purified and shipped in a 2D barcoded Matrix tube containing 10ug of transfection-ready, dried plasmid DNA (reconstitute with 100 ul of water).

- Reconstitution Method:**
1. Centrifuge at 5,000xg for 5min.
 2. Carefully open the tube and add 100ul of sterile water to dissolve the DNA.
 3. Close the tube and incubate for 10 minutes at room temperature.
 4. Briefly vortex the tube and then do a quick spin (less than 5000xg) to concentrate the liquid at the bottom.
 5. Store the suspended plasmid at -20°C. The DNA is stable for at least one year from date of shipping when stored at -20°C.

RefSeq: [NM_001134478.1](#), [NP_001127950.1](#)

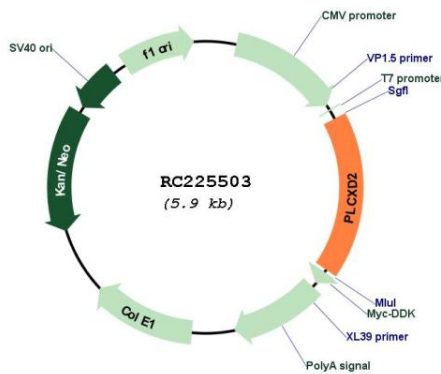
RefSeq ORF: 1025 bp

Locus ID: 257068

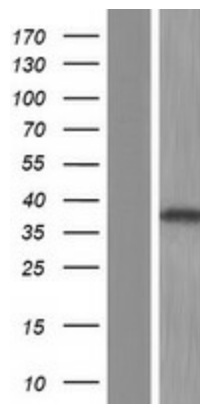
Cytogenetics: 3q13.2

MW: 38.4 kDa

Product images:



Circular map for RC225503



Western blot validation of overexpression lysate (Cat# [LY427454]) using anti-DDK antibody (Cat# [TA50011-100]). Left: Cell lysates from untransfected HEK293T cells; Right: Cell lysates from HEK293T cells transfected with RC225503 using transfection reagent MegaTran 2.0 (Cat# [TT210002]).