

## Product datasheet for RC225502

### p53 (TP53) (NM\_001126114) Human Tagged ORF Clone

#### Product data:

**Product Type:** Expression Plasmids  
**Product Name:** p53 (TP53) (NM\_001126114) Human Tagged ORF Clone  
**Tag:** Myc-DDK  
**Symbol:** p53  
**Synonyms:** BCC7; BMFS5; LFS1; P53; TRP53  
**Mammalian Cell Selection:** Neomycin  
**Vector:** pCMV6-Entry (PS100001)  
**E. coli Selection:** Kanamycin (25 ug/mL)  
**ORF Nucleotide Sequence:** >RC225502 representing NM\_001126114  
 Red=Cloning site Blue=ORF Green=Tags(s)

TTTTGTAATACGACTCACTATAGGGCGGCCGGAATTCGTCGACTGGATCCGGTACCGAGGAGATCTGCC  
 GCC**CGATCGCC**

ATGGAGGAGCCGAGTCAGATCCTAGCGTCGAGCCCCCTCTGAGTCAGGAAACATTTTCAGACCTATGGA  
 AACTACTTCTGAAAACAACGTTCTGTCCCCCTTGCCGTCCTCAAGCAATGGATGATTTGATGCTGTCCCC  
 GGACGATATTGAACAATGGTTCAGTGAAGACCCAGGTCCAGATGAAGCTCCAGAATGCCAGAGGCTGCT  
 CCCCCGTGGCCCTGCACCAGCAGCTCCTACCCGGCGGCCCTGCACCAGCCCCCTCTGGCCCTGT  
 CATCTTCTGTCCCTTCCAGAAAACCTACCAGGGCAGCTACGGTTCCGTCTGGGCTTCTTGCACTTCTGG  
 GACAGCCAAGTCTGTGACTTGCACGTAATCCCCTGCCCTCAACAAGATGTTTTGCCAACTGGCCAAGACC  
 TGCCCTGTGCAGCTGTGGGTTGATTCCACACCCCCGCGCCGACCCGCGTCCGCGCCATGGCCATCTACA  
 AGCAGTCACAGCAGATGACGGAGGTTGTGAGGCGCTGCCCCACCATGAGCGCTGCTCAGATAGCGATGG  
 TCTGGCCCTCCTCAGCATCTTATCCGAGTGGAAGGAAATTTGCGTGTGGAGTATTTGGATGACAGAAAAC  
 ACTTTTCGACATAGTGTGGTGGTGCCCTATGAGCCGCTGAGGTTGGCTCTGACTGTACCACCATCCACT  
 ACAACTACATGTGTAACAGTTCCTGCATGGCGGCATGAACCGGAGGCCATCCTCACCATCATCACACT  
 GGAAGACTCCAGTGGAATCTACTGGGACGGAACAGCTTTGAGGTGCGTGTGTTGTGCCTGTCTGGGAGA  
 GACCGGCGCACAGAGGAAGAGAATCTCCGCAAGAAAGGGGAGCCTCACCAGAGCTGCCCCAGGGAGCA  
 CTAAGCGAGCACTGCCCAACAACACAGCTCCTCTCCCCAGCAAAGAAGAAACCACTGGATGGAGAATA  
 TTTCACCCTTCAGGACCAGACCAGCTTTCAAAAAGAAAATTGT

**ACGCGT**ACGCGGCCGCTCGAGCAGAAACTCATCTCAGAAGAGGATCTGGCAGCAAATGATATCCTGGATT  
 ACAAGGATGACGACGATAAGGTTTAA



[View online »](#)

**Protein Sequence:** >RC225502 representing NM\_001126114  
Red=Cloning site Green=Tags(s)

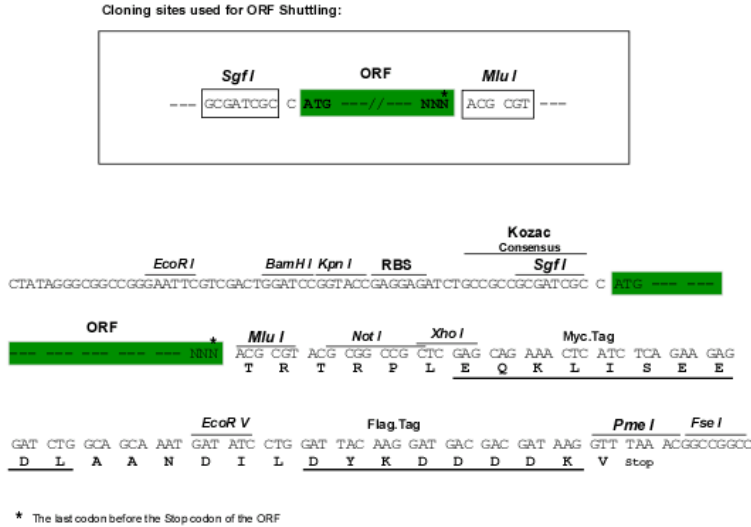
MEEPQSDPSVEPPLSQETFSDLWKLLPENNVLSPLPSQAMDDLMLSPDDIEQWFTEDPGPDEAPRMPEAA  
 PPVAPAPAAPTPAAPAPAPSWPLSSSVPSQKTYQGSYGFRLGFLHSGTAKSVTCTYSPALNKMFCQLAKT  
 CPVQLWVDSTPPPGRVIRAMAIYKQSQHMTEVVRRCPPHHERCSDSDGLAPPQHLIRVEGNLRVEYLDDRN  
 TFRHSVVVPYEPPEVGSDCCTTIIHYNMCMSSCMGGMNRRPILTIITLEDSSGNLLGRNSFEVRCACPGR  
 DRRTEEENLRKKGEPHHELPPGSTRKALPNNTSSSPQPKKKPLDGEYFTLQDQTSFQKENC

TRTRPLEQKLISEEDLAANDILDYKDDDDKV

**Chromatograms:** [https://cdn.origene.com/chromatograms/mk8053\\_d08.zip](https://cdn.origene.com/chromatograms/mk8053_d08.zip)

**Restriction Sites:** SgfI-MluI

**Cloning Scheme:**



**ACCN:** NM\_001126114

**ORF Size:** 1023 bp

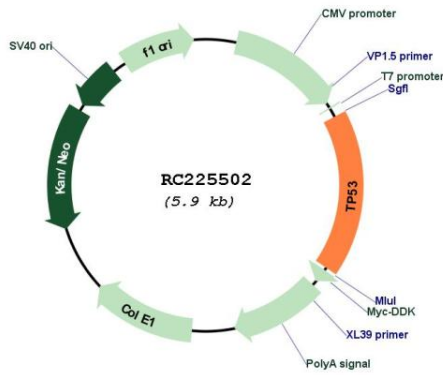
**OTI Disclaimer:** The molecular sequence of this clone aligns with the gene accession number as a point of reference only. However, individual transcript sequences of the same gene can differ through naturally occurring variations (e.g. polymorphisms), each with its own valid existence. This clone is substantially in agreement with the reference, but a complete review of all prevailing variants is recommended prior to use. [More info](#)

**OTI Annotation:** This clone was engineered to express the complete ORF with an expression tag. Expression varies depending on the nature of the gene.

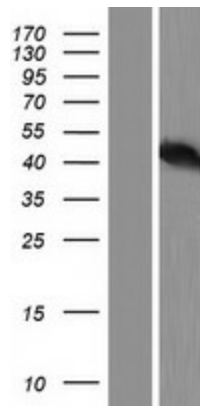
**Components:** The ORF clone is ion-exchange column purified and shipped in a 2D barcoded Matrix tube containing 10ug of transfection-ready, dried plasmid DNA (reconstitute with 100 ul of water).

<b>Reconstitution Method:</b>	<ol style="list-style-type: none"><li>1. Centrifuge at 5,000xg for 5min.</li><li>2. Carefully open the tube and add 100ul of sterile water to dissolve the DNA.</li><li>3. Close the tube and incubate for 10 minutes at room temperature.</li><li>4. Briefly vortex the tube and then do a quick spin (less than 5000xg) to concentrate the liquid at the bottom.</li><li>5. Store the suspended plasmid at -20°C. The DNA is stable for at least one year from date of shipping when stored at -20°C.</li></ol>
<b>Note:</b>	Plasmids are not sterile. For experiments where strict sterility is required, filtration with 0.22um filter is required.
<b>RefSeq:</b>	<u>NM_001126114.2, NP_001119586.1</u>
<b>RefSeq ORF:</b>	1026 bp
<b>Locus ID:</b>	7157
<b>UniProt ID:</b>	<u>P04637</u>
<b>Cytogenetics:</b>	17p13.1
<b>Protein Families:</b>	Druggable Genome, Stem cell - Pluripotency, Transcription Factors
<b>Protein Pathways:</b>	Amyotrophic lateral sclerosis (ALS), Apoptosis, Basal cell carcinoma, Bladder cancer, Cell cycle, Chronic myeloid leukemia, Colorectal cancer, Endometrial cancer, Glioma, Huntington's disease, MAPK signaling pathway, Melanoma, Neurotrophin signaling pathway, Non-small cell lung cancer, p53 signaling pathway, Pancreatic cancer, Pathways in cancer, Prostate cancer, Small cell lung cancer, Thyroid cancer, Wnt signaling pathway
<b>MW:</b>	37.6 kDa
<b>Gene Summary:</b>	This gene encodes a tumor suppressor protein containing transcriptional activation, DNA binding, and oligomerization domains. The encoded protein responds to diverse cellular stresses to regulate expression of target genes, thereby inducing cell cycle arrest, apoptosis, senescence, DNA repair, or changes in metabolism. Mutations in this gene are associated with a variety of human cancers, including hereditary cancers such as Li-Fraumeni syndrome. Alternative splicing of this gene and the use of alternate promoters result in multiple transcript variants and isoforms. Additional isoforms have also been shown to result from the use of alternate translation initiation codons from identical transcript variants (PMIDs: 12032546, 20937277). [provided by RefSeq, Dec 2016]

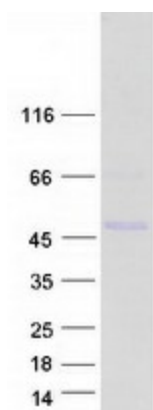
Product images:



Circular map for RC225502



Western blot validation of overexpression lysate (Cat# [LY426654]) using anti-DDK antibody (Cat# [TA50011-100]). Left: Cell lysates from untransfected HEK293T cells; Right: Cell lysates from HEK293T cells transfected with RC225502 using transfection reagent MegaTran 2.0 (Cat# [TT210002]).



Coomassie blue staining of purified TP53 protein (Cat# [TP325502]). The protein was produced from HEK293T cells transfected with TP53 cDNA clone (Cat# RC225502) using MegaTran 2.0 (Cat# [TT210002]).