

Product datasheet for RC225498

DARC (ACKR1) (NM_001122951) Human Tagged ORF Clone

Product data:

Product Type:	Expression Plasmids
Product Name:	DARC (ACKR1) (NM_001122951) Human Tagged ORF Clone
Tag:	Myc-DDK
Symbol:	DARC
Synonyms:	CCBP1; CD234; DARC; DARC/ACKR1; Dfy; FY; GPD; GpFy; WBCQ1
Mammalian Cell Selection:	Neomycin
Vector:	pCMV6-Entry (PS100001)
E. coli Selection:	Kanamycin (25 ug/mL)
ORF Nucleotide Sequence:	>RC225498 representing NM_001122951 Red=Cloning site Blue=ORF Green=Tags(s)

TTTTGTAATACGACTCACTATAGGGCGGCCGGAATTCGTCGACTGGATCCGGTACCGAGGAGATCTGCC
GCC**CGGATCGCC**

ATGGCCTCCTCTGGGTATGTCCTCCAGGCGGAGCTCTCCCCCTCAACTGAGAACTCAAGTCAGCTGGACT
TCGAAGATGTATGGAATCTTCTATGGTGTGAATGATTCTTCCAGATGGAGACTATGGTGCCAACT
GGAAGCAGCTGCCCCCTGCCACTCCTGTAACCTGCTGGATGACTCTGCACTGCCCTTCTTCATCCTCACC
AGTGTCTGGGTATCCTAGCTAGCAGCACTGTCTCTTCATGCTTTTCAGACCTCTTCCGCTGGCAGC
TCTGCCCTGGCTGGCCTGTCCTGGCACAGCTGGCTGTGGCAGTGCCTCTTCAGCATTGTGGTGGCCGT
CTTGGTCCCAGGGCTAGGTAGCACTCGCAGCTCTGCCCTGTGTAGCCTGGGCTACTGTGTCTGGTATGGC
TCAGCCTTTGCCAGGCTTTGCTGCTAGGGTGCCATGCCTCCCTGGGCCACAGACTGGGTGCAGGCCAGG
TCCCAGGCCTCACCTGGGGCTCACTGTGGGAATTTGGGGAGTGGCTGCCCTACTGACACTGCCTGTAC
CCTGGCCAGTGGTCTTCTGGTGGACTCTGCACCCTGATATACAGCACGGAGCTGAAGGCTTTGCAGGCC
ACACACACTGTAGCCTGTCTTGGCATCTTTGCTTGTGGCATTGGGTTTGTGGAGCCAAGGGCTGA
AGAAGGCATTGGGTATGGGGCCAGGCCCTGGATGAACATCCTGTGGCCTGGTTATTTCTGGTGGCC
TCATGGGGTGGTCTAGGACTGGATTTCTGGTGGTCAAGCTGTTGCTGTTGCAACATGTCTGGCC
CAGCAGGCTCTGGACCTGCTGTAACCTGGCAGAAGCCCTGGCAATTTGCACTGTGTGGCTACGCCCC
TGCTCCTCGCCCTATTCTGCCACCAGGCCACCCGACCCTCTTGCCTCTCTGCCCTCCCTGAAGGATG
GTTTTCTCATCTGGACACCCTTGAAGCAAATCC

ACGCGTACGCGGCCGCTCGAGCAGAACTCATCTCAGAAGAGGATCTGGCAGCAAATGATATCCTGGATT
ACAAGGATGACGACGATAAGGTTTAA



[View online »](#)

Protein Sequence: >RC225498 representing NM_001122951
Red=Cloning site Green=Tags(s)

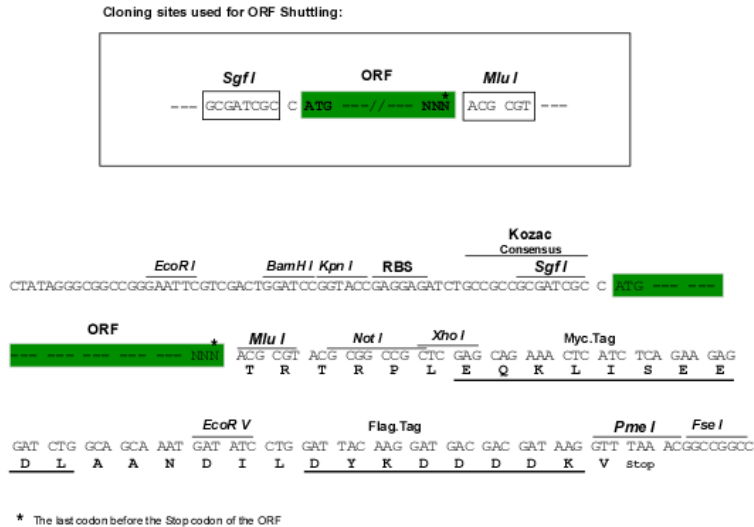
MASSGYVLQAELSPSTENSSQLDFEDVWNSYGVNDSFPDGDYGANLEAAAPCHSCNLLDSDALPFFILT
 SVLGILASSTVLFMLFRPLFRWQLCPGWPVLAQLAVGSALFSIVVPVLPGLGSTRSSALCSLGYCVWYG
 SAFAQALLLGCHASLGHRLGAGQVPGLTLGLTVGIWGAALLTLPVTLASGASGGLCTLIYSTELKALQA
 THTVACLAI FVLLPLGLFGAKGLKKALGMGPWMNILWAWFIFWWPHGVVLGLDFLVRSKLLLLSTCLA
 QQALDLLLNLAELAILHCVATPLLLALFCHQATRTLLPSLPLPEGWFSHLDTLGSKS

TRTRPLEQKLISEEDLAANDILDYKDDDDKV

Chromatograms: https://cdn.origene.com/chromatograms/mg3391_e02.zip

Restriction Sites: SgfI-MluI

Cloning Scheme:



ACCN: NM_001122951

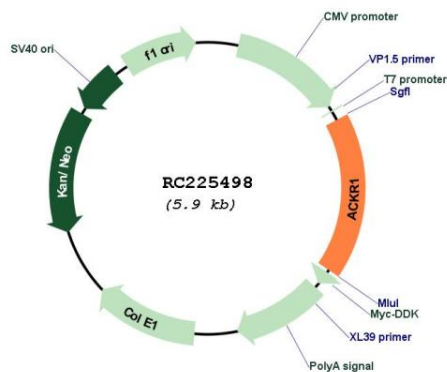
ORF Size: 1014 bp

OTI Disclaimer: Due to the inherent nature of this plasmid, standard methods to replicate additional amounts of DNA in E. coli are highly likely to result in mutations and/or rearrangements. Therefore, OriGene does not guarantee the capability to replicate this plasmid DNA. Additional amounts of DNA can be purchased from OriGene with batch-specific, full-sequence verification at a reduced cost. Please contact our customer care team at custsupport@origene.com or by calling 301.340.3188 option 3 for pricing and delivery.

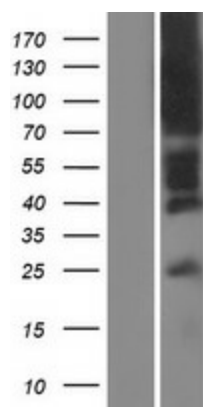
The molecular sequence of this clone aligns with the gene accession number as a point of reference only. However, individual transcript sequences of the same gene can differ through naturally occurring variations (e.g. polymorphisms), each with its own valid existence. This clone is substantially in agreement with the reference, but a complete review of all prevailing variants is recommended prior to use. [More info](#)

OTI Annotation:	This clone was engineered to express the complete ORF with an expression tag. Expression varies depending on the nature of the gene.
Components:	The ORF clone is ion-exchange column purified and shipped in a 2D barcoded Matrix tube containing 10ug of transfection-ready, dried plasmid DNA (reconstitute with 100 ul of water).
Reconstitution Method:	<ol style="list-style-type: none">1. Centrifuge at 5,000xg for 5min.2. Carefully open the tube and add 100ul of sterile water to dissolve the DNA.3. Close the tube and incubate for 10 minutes at room temperature.4. Briefly vortex the tube and then do a quick spin (less than 5000xg) to concentrate the liquid at the bottom.5. Store the suspended plasmid at -20°C. The DNA is stable for at least one year from date of shipping when stored at -20°C.
RefSeq:	NM_001122951.3
RefSeq ORF:	1017 bp
Locus ID:	2532
UniProt ID:	Q16570
Cytogenetics:	1q23.2
Protein Families:	Druggable Genome, GPCR, Transmembrane
MW:	35.5 kDa
Gene Summary:	The protein encoded by this gene is a glycosylated membrane protein and a non-specific receptor for several chemokines. The encoded protein is the receptor for the human malarial parasites <i>Plasmodium vivax</i> and <i>Plasmodium knowlesi</i> . Polymorphisms in this gene are the basis of the Duffy blood group system. Two transcript variants encoding different isoforms have been found for this gene. [provided by RefSeq, Jul 2008]

Product images:



Circular map for RC225498



Western blot validation of overexpression lysate (Cat# [LY426584]) using anti-DDK antibody (Cat# [TA50011-100]). Left: Cell lysates from untransfected HEK293T cells; Right: Cell lysates from HEK293T cells transfected with RC225498 using transfection reagent MegaTran 2.0 (Cat# [TT210002]).