

Product datasheet for **RC225495**

IGLON5 (NM_001101372) Human Tagged ORF Clone

Product data:

Product Type:	Expression Plasmids
Product Name:	IGLON5 (NM_001101372) Human Tagged ORF Clone
Tag:	Myc-DDK
Symbol:	IGLON5
Mammalian Cell Selection:	Neomycin
Vector:	pCMV6-Entry (PS100001)
E. coli Selection:	Kanamycin (25 ug/mL)
ORF Nucleotide Sequence:	>RC225495 representing NM_001101372 Red=Cloning site Blue=ORF Green=Tags(s)

TTTTGTAATACGACTCACTATAGGGCGGCCGGAATTCGTCGACTGGATCCGGTACCGAGGAGATCTGCC
GCC**CGATCGCC**

ATGCCCCCCTGCGCCCGGGCCCGGCTCCGGCTTCTCGCCCGCCGCCCTGGCCGGCTTGGCCGTCA
TCAGCCGAGGGCTGCTCTCCAGAGCCTGGAGTTCAACTCTCTGCCGACAACACACAGTGTGTGAAGG
TGACAACGCCACCCTCAGCTGCTTCATCGACGAGCACGTGACCCGCGTGGCCTGGCTGAACCGCTCCAAC
ATCCTGTATGCCGGCAATGACCGCTGGACCAGCGACCCGCGGGTGGCCTGCTCATCAACACCCCGAGG
AGTTCTCCATCCTCATCACCGAGGTGGGGCTCGGCGACGAGGGCCTCTACACTGCTCCTCCAGACCCG
CCACCAGCCGTACACCCTCAGGTCTACCTCATTGTCCACGTCCCTGCCGATTGTGAACATCTCGTCCG
CCTGTGACGGTGAATGAGGGGGCAATGTGAACCTGCTTTGCCTGGCCGTGGGGCGCCAGAGCCACGG
TCACCTGGAGACAGCTCCGAGACGGCTTCACTCGGAGGGAGAGATCCTGGAGATCTCTGACATCCAGCG
GGGCCAGGCCGGGAGTATGAGTGCGTGACTCACAAACGGGTTAACTCGGCGCCGACAGCCGCGCGTG
CTGGTCACAGTCAACTATCCTCCGACCATCACGGACGTGACCAGCGCCCGACCGCGCTGGGCCGGGCCG
CCCTCCTGCGCTGCGAAGCCATGGCGTTCCCCCGGGATTTCCAGTGTACAAGGATGACAGACTGCT
GAGCAGCGGCACGGCCGAAGCCTGAAGGTGCAGACGGAGCGCACCCGCTCGATGCTTCTTTGCCAAC
GTGAGCGCCCGCATTACGGCAACTATAGTGTGCGCCGCCAACCGACTGGGAGCGTCCAGCGCCTCCA
TGGCGCTCCTGCGCCAGGATCCCTGGAGAACTCAGCCCCGAGGCCCCAGGGCTCCTGGCCCTCCTCTC
CGCCCTGGGCTGGCTGTGGTGGAGAATG

ACGCGTACGCGGCCGCTCGAGCAGAACTCATCTCAGAAGAGGATCTGGCAGCAAATGATATCCTGGATT
ACAAGGATGACGACGATAAGGTTTAA



[View online »](#)

Protein Sequence: >RC225495 representing NM_001101372
Red=Cloning site Green=Tags(s)

MPPPAPGARLRLAAAAAGLAVISRGLLSQSLEFNSPADNYTVCEGDNATLSCFIDEHVTRVAVLNRSN
 ILYAGNDRWTS DPRVRLINTPEEFSILITEVGLGDEGLYTC SFQTRHQPYTTQVYLIVHVPARIVNISS
 PVTVNEGNNVLLCLAVGRPEPTVTWRQLRDGFTSEGEILEISDIQRGQAGEYECVTHNGVNSAPDSRRV
 LVTVNYPTITDVTSARTALGRAALLRCEAMAVPPADFWYKDDRLSSGTAEGLKVQTERTRSMLLFAN
 VSARHYGNYTCRAANRLGASSASMRLLRPGSLENSAPRPPGLLALLSALGWLWWRM

TRTRPLEQKLISEEDLAANDILDYKDDDDKV

Chromatograms: https://cdn.origene.com/chromatograms/mk8005_h09.zip

Restriction Sites: Sgfl-MluI

Cloning Scheme:

Cloning sites used for ORF Shuttling:



* The last codon before the Stop codon of the ORF

ACCN: NM_001101372

ORF Size: 1008 bp

OTI Disclaimer: Due to the inherent nature of this plasmid, standard methods to replicate additional amounts of DNA in E. coli are highly likely to result in mutations and/or rearrangements. Therefore, OriGene does not guarantee the capability to replicate this plasmid DNA. Additional amounts of DNA can be purchased from OriGene with batch-specific, full-sequence verification at a reduced cost. Please contact our customer care team at custsupport@origene.com or by calling 301.340.3188 option 3 for pricing and delivery.

The molecular sequence of this clone aligns with the gene accession number as a point of reference only. However, individual transcript sequences of the same gene can differ through naturally occurring variations (e.g. polymorphisms), each with its own valid existence. This clone is substantially in agreement with the reference, but a complete review of all prevailing variants is recommended prior to use. [More info](#)

OTI Annotation: This clone was engineered to express the complete ORF with an expression tag. Expression varies depending on the nature of the gene.

Components: The ORF clone is ion-exchange column purified and shipped in a 2D barcoded Matrix tube containing 10ug of transfection-ready, dried plasmid DNA (reconstitute with 100 ul of water).

Reconstitution Method:

1. Centrifuge at 5,000xg for 5min.
2. Carefully open the tube and add 100ul of sterile water to dissolve the DNA.
3. Close the tube and incubate for 10 minutes at room temperature.
4. Briefly vortex the tube and then do a quick spin (less than 5000xg) to concentrate the liquid at the bottom.
5. Store the suspended plasmid at -20°C. The DNA is stable for at least one year from date of shipping when stored at -20°C.

RefSeq: [NM_001101372.2](#)

RefSeq ORF: 1011 bp

Locus ID: 402665

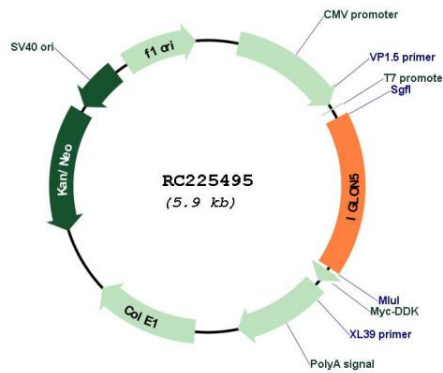
UniProt ID: [A6NGN9](#)

Cytogenetics: 19q13.41

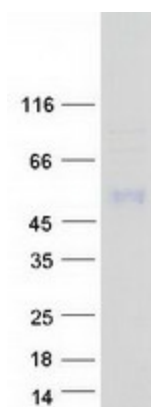
Protein Families: Transmembrane

MW: 36.6 kDa

Product images:



Circular map for RC225495



Coomassie blue staining of purified IGLON5 protein (Cat# [TP325495]). The protein was produced from HEK293T cells transfected with IGLON5 cDNA clone (Cat# RC225495) using MegaTran 2.0 (Cat# [TT210002]).