

Product datasheet for **RC225493**

PSG5 (NM_001130014) Human Tagged ORF Clone

Product data:

Product Type:	Expression Plasmids
Product Name:	PSG5 (NM_001130014) Human Tagged ORF Clone
Tag:	Myc-DDK
Symbol:	PSG5
Synonyms:	FL-NCA-3; PSG
Mammalian Cell Selection:	Neomycin
Vector:	pCMV6-Entry (PS100001)
E. coli Selection:	Kanamycin (25 ug/mL)
ORF Nucleotide Sequence:	>RC225493 ORF sequence Red=Cloning site Blue=ORF Green=Tags(s)

TTTTGTAATACGACTCACTATAGGGCGGCCGGAATTCGTCGACTGGATCCGGTACCGAGGAGATCTGCC
GCC**CGATCGCC**

ATGGGGCCCTCTCAGCCCTCCCTGCACACAGCACATCACCTGGAAGGGGGTCTGCTCACAGCATCAC
TTTTAACTTCTGGAACCTGCCTATCACTGCTCAAGTCACGATTGAAGCCCTGCCACCCAAAGTTCCGA
GGGAAGGATGTTCTTCTACTTGTCCACAATTTGCCTCAGAATCTTGCTGGCTACATCTGGTACAAAGGA
CAACTGATGGACCTCTACCATTACATTACATCATATGTAGTAGACGGTCAAATAAATATATATGGGCCTG
CATACACTGGACGAGAAACAGTATATTCCAATGCATCCCTGCTGATCCAGAATGTCACCCGGGAAGACGC
AGGATCCTATACCTTACACATCATAAAGCGAGGTGATAGGACTAGAGGAGTAAGTGGATATTTACCTTC
AACTTATACCTGAAGCTGCCAAGCCCTACATCACCATCAACAACCTCAAAACCCAGGGAGAATAAGGATG
TCTTAGCCTTACCTGTGAACCTAAGAGTGAGAACTACACCTACATTTGGTGGCTAAATGGTCAGAGCCT
CCCGGTCACTCCAGGGTAAAGCAACCCATTGAAAACAGGATCCTCATTCTACCCAGTGTACAGAGAAAT
GAAACAGGACCCTATGAATGTGAAATACGGGACCGAGATGGTGGCATGCACAGTGACCCAGTCACCTGA
ATGTCCTCTATGGTCCAGACCTCCCAGCATTTACCCTTCATTACCTATTACCGTTCAGGAGAAAACCT
CTACTTGTCTGCTTCGCGGAATCTAACCACCCGAGAGTATTTTTGGACAATTAATGGGAAGTTTCAG
CAATCAGGACAAAAGCTCTATCCCCAAATTAACAAGCATAGAGGGCTCTATACTTGCTCTGTTC
GTAACCTAGCCACTGGCAAGGAAAGCTCAAATCCATGACAGTCGAAGTCTCTGCTCCTTCAGGAATAGG
ACGTCTTCTCTCCTTAATCCAATA

ACGCGTACGCGGCCGCTCGAGCAGAACTCATCTCAGAAGAGGATCTGGCAGCAAATGATATCCTGGATT
ACAAGGATGACGACGATAAGGTTTAA



[View online »](#)

Reconstitution Method:

1. Centrifuge at 5,000xg for 5min.
2. Carefully open the tube and add 100ul of sterile water to dissolve the DNA.
3. Close the tube and incubate for 10 minutes at room temperature.
4. Briefly vortex the tube and then do a quick spin (less than 5000xg) to concentrate the liquid at the bottom.
5. Store the suspended plasmid at -20°C. The DNA is stable for at least one year from date of shipping when stored at -20°C.

RefSeq: [NM_001130014.1](#), [NP_001123486.1](#)

RefSeq Size: 1601 bp

RefSeq ORF: 1008 bp

Locus ID: 5673

UniProt ID: [Q15238](#)

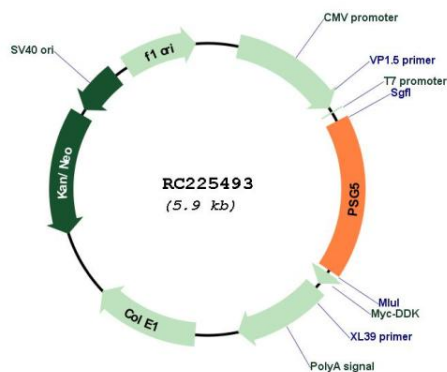
Cytogenetics: 19q13.31

Protein Families: Secreted Protein

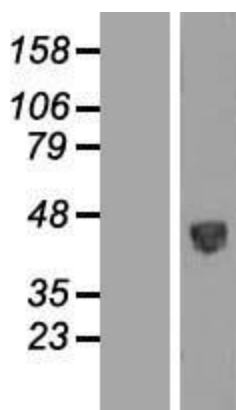
MW: 37.7 kDa

Gene Summary: The human pregnancy-specific glycoproteins (PSGs) are a group of molecules that are mainly produced by the placental syncytiotrophoblasts during pregnancy. PSGs comprise a subgroup of the carcinoembryonic antigen (CEA) family, which belongs to the immunoglobulin superfamily. For additional general information about the PSG gene family, see PSG1 (MIM 176390).[supplied by OMIM, Oct 2009]

Product images:



Circular map for RC225493



Western blot validation of overexpression lysate (Cat# [LY427103]) using anti-DDK antibody (Cat# [TA50011-100]). Left: Cell lysates from untransfected HEK293T cells; Right: Cell lysates from HEK293T cells transfected with RC225493 using transfection reagent MegaTran 2.0 (Cat# [TT210002]).