

## Product datasheet for **RC225489**

### **MFGE8 (NM\_001114614) Human Tagged ORF Clone**

#### Product data:

Product Type:	Expression Plasmids
Product Name:	MFGE8 (NM_001114614) Human Tagged ORF Clone
Tag:	Myc-DDK
Symbol:	MFGE8
Synonyms:	BA46; EDIL1; HMFG; hP47; HsT19888; MFG-E8; MFGM; OAcGD3S; SED1; SPAG10
Mammalian Cell Selection:	Neomycin
Vector:	pCMV6-Entry (PS100001)
E. coli Selection:	Kanamycin (25 ug/mL)
ORF Nucleotide Sequence:	>RC225489 representing NM_001114614 Red=Cloning site Blue=ORF Green=Tags(s)

TTTTGTAATACGACTCACTATAGGGCGGCCGGAATTCGTCGACTGGATCCGGTACCGAGGAGATCTGCC  
GCC**CGATCGCC**

ATGCCGCGCCCCGCTGCTGGCCGCGCTGTGCGGCGGCTGCTCTGCGCCCCAGCCTCCTCGTCGCCC  
TGGATATCTGTTCAAAAACCCCTGCCACAACGGTGGTTATGCGAGGAGATTTCCCAAGAAGTGCAGG  
AGATGTCTTCCCCTCGTACACCTGCACGTGCCTTAAGGGCTACGCGGGCAACCACTGTGAGACGAAATGT  
GTCGAGCCACTGGCCTGGAGAATGGGAACATTGCCAACTCACAGATCGCCGCTCGTCTGTGCGTGTGA  
CCTTCTTGGGTTTGCAGCATTGGGTCCCGGAGCTGGCCCGCTGAACCGCGCAGGCATGGTCAATGCCTG  
GACACCCAGCAGCAATGACGATAAACCCTGGATCCAGGTGAACCTGCTGCGGAGGATGTGGGTAACAGGT  
GTGGTGACGCAGGTTGCCAGCCGCTTGGCCAGTCATGAGTACCTGAAGGCCTTCAAGGTGGCCTACAGCC  
TTAATGGACACGAATTCGATTTTCATCCATGATGTTAATAAAAAACACAAGGAGTTTGTGGGTAACGGAA  
CAAAAACGCGGTGCATGTCAACCTGTTTGGAGCCCTGTGGAGGCTCAGTACGTGAGATTGTACCCACG  
AGCTGCCACACGGCCTGCACTCTGCGCTTTGAGCTACTGGGCTGTGAGCTGAACGGATGCGCCAATCCCC  
TGGCCTGAAGAATAACAGCATCCCTGACAAGCAGATCACGGCCTCCAGCAGCTACAAGACCTGGGGCTT  
GCATCTCTCAGCTGGAACCCCTCCTATGCACGGCTGGACAAGCAGGGCAACTTCAACGCCTGGGTTGCG  
GGGAGCTACGGTAACGATCAGTGGCTGCAGATCTCCCTGGCAACTGGGACAACCACTCCCACAAGAAGA  
ACTTGTGTTGAGACGCCATCCTGGCTCGCTATGTGCGCATCCTGCCTGTAGCCTGGCACAACCGCATCGC  
CCTGCGCCTGGAGCTGCTGGGCTGT

**ACGCGT**ACGCGGCCGCTCGAGCAGAACTCATCTCAGAAGAGGATCTGGCAGCAATGATATCCTGGATT  
ACAAGGATGACGACGATAAGGTTTAA



[View online »](#)

**Protein Sequence:** >RC225489 representing NM\_001114614  
Red=Cloning site Green=Tags(s)

MPPRLLAALCGALLCAPSLLVALDICKNPNCHNGGLCEEISQEVRGDVFPSYCTCLKGYAGNHCETKC  
 VEPLGLENGNIANSQIAASSVRVTFGLQLQHWPELARLNLRAGMVNAWTPSSNDDNPWIQVNLLRRMWVTG  
 VVTQGASRLASHEYLKAFKVAYSLNGHEFDFIHDVNKKHKEFVGNWNKNVHVNLFETPVEAQYVRLYPT  
 SCHTACTLRFELLGCELNGCANPLGLKNNIPDKQITASSSYKTWGLHLFSWNPSYARLDKQGNFNAWVA  
 GSYGNDQWLQIFPGNWDNHSHKKNLFETPILARYVRILPVAWHNRIRLRELLGC

TRTRPLEQKLISEEDLAANDILDYKDDDDKV

**Chromatograms:** [https://cdn.origene.com/chromatograms/ja1502\\_f08.zip](https://cdn.origene.com/chromatograms/ja1502_f08.zip)

**Restriction Sites:** SgfI-MluI

**Cloning Scheme:**



**ACCN:** NM\_001114614

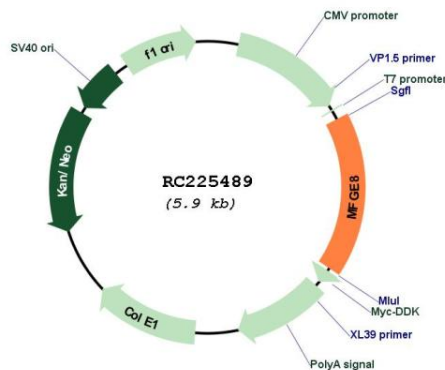
**ORF Size:** 1005 bp

**OTI Disclaimer:** Due to the inherent nature of this plasmid, standard methods to replicate additional amounts of DNA in E. coli are highly likely to result in mutations and/or rearrangements. Therefore, OriGene does not guarantee the capability to replicate this plasmid DNA. Additional amounts of DNA can be purchased from OriGene with batch-specific, full-sequence verification at a reduced cost. Please contact our customer care team at [custsupport@origene.com](mailto:custsupport@origene.com) or by calling 301.340.3188 option 3 for pricing and delivery.

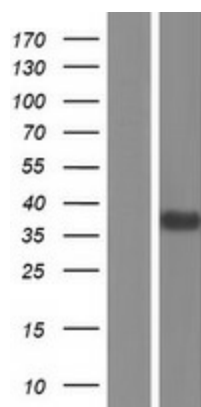
The molecular sequence of this clone aligns with the gene accession number as a point of reference only. However, individual transcript sequences of the same gene can differ through naturally occurring variations (e.g. polymorphisms), each with its own valid existence. This clone is substantially in agreement with the reference, but a complete review of all prevailing variants is recommended prior to use. [More info](#)

<b>OTI Annotation:</b>	This clone was engineered to express the complete ORF with an expression tag. Expression varies depending on the nature of the gene.
<b>Components:</b>	The ORF clone is ion-exchange column purified and shipped in a 2D barcoded Matrix tube containing 10ug of transfection-ready, dried plasmid DNA (reconstitute with 100 ul of water).
<b>Reconstitution Method:</b>	<ol style="list-style-type: none"> <li>1. Centrifuge at 5,000xg for 5min.</li> <li>2. Carefully open the tube and add 100ul of sterile water to dissolve the DNA.</li> <li>3. Close the tube and incubate for 10 minutes at room temperature.</li> <li>4. Briefly vortex the tube and then do a quick spin (less than 5000xg) to concentrate the liquid at the bottom.</li> <li>5. Store the suspended plasmid at -20°C. The DNA is stable for at least one year from date of shipping when stored at -20°C.</li> </ol>
<b>RefSeq:</b>	<u><a href="#">NM_001114614.3</a></u>
<b>RefSeq ORF:</b>	1008 bp
<b>Locus ID:</b>	4240
<b>UniProt ID:</b>	<u><a href="#">Q08431</a></u>
<b>Cytogenetics:</b>	15q26.1
<b>MW:</b>	37.3 kDa
<b>Gene Summary:</b>	This gene encodes a preproprotein that is proteolytically processed to form multiple protein products. The major encoded protein product, lactadherin, is a membrane glycoprotein that promotes phagocytosis of apoptotic cells. This protein has also been implicated in wound healing, autoimmune disease, and cancer. Lactadherin can be further processed to form a smaller cleavage product, medin, which comprises the major protein component of aortic medial amyloid (AMA). Alternative splicing results in multiple transcript variants. [provided by RefSeq, Jul 2015]

### Product images:



Circular map for RC225489



Western blot validation of overexpression lysate (Cat# [LY426493]) using anti-DDK antibody (Cat# [TA50011-100]). Left: Cell lysates from untransfected HEK293T cells; Right: Cell lysates from HEK293T cells transfected with RC225489 using transfection reagent MegaTran 2.0 (Cat# [TT210002]).