

Product datasheet for RC225482

SPON2 (NM_001128325) Human Tagged ORF Clone

Product data:

Product Type:	Expression Plasmids
Product Name:	SPON2 (NM_001128325) Human Tagged ORF Clone
Tag:	Myc-DDK
Symbol:	SPON2
Synonyms:	DIL-1; DIL1; M-SPONDIN; MINDIN
Mammalian Cell Selection:	Neomycin
Vector:	pCMV6-Entry (PS100001)
E. coli Selection:	Kanamycin (25 ug/mL)
ORF Nucleotide Sequence:	>RC225482 representing NM_001128325 Red=Cloning site Blue=ORF Green=Tags(s)

TTTTGTAATACGACTCACTATAGGGCGGCCGGAATTCGTCGACTGGATCCGGTACCGAGGAGATCTGCC
GCC**CGGATCGCC**

ATGGAAAACCCAGCCCGCCGCCCTGGGCAAGGCCCTCTGCGCTCTCTCTGGCCACTCTCGGCG
CCGCCGGCCAGCCTCTGGGGGAGAGTCCATCTGTTCCGCCAGAGCCCGGCCAAATACAGCATCACCTT
CACGGCAAGTGGAGCCAGACGGCCTTCCCAAGCAGTACCCCTGTTCCGCCCCCTGCGCAGTGGTCT
TCGCTGCTGGGGCCGCGCATAGCTCCGACTACAGCATGTGGAGGAAGAACCAGTACGTAGTAACGGG
TGCAGACTTTGCGGAGCGGGGAGGCCCTGGGCGCTGATGAAGGAGATCGAGGCGCGGGGAGGCGCT
GCAGAGCGTGCACGAGGTGTTTTCGGCGCCCGCGTCCCAAGCGCACCGGGCAGACGTGCGCGGAGCTG
GAGGTGCAGCGCAGGCACTCGCTGGTCTCGTTTGTGGTGCATCGTGCCAGCCCCGACTGGTTCTGTGG
GCGTGGACAGCCTGGACCTGTGCGACGGGGACCGTTGGCGGGAACAGGCGGCGCTGGACCTGTACCCCTA
CGACGCCGGGACGGACAGCGGCTTACCTTCTCTCCCCAACTTCGCCACCATCCCGCAGGACACGGTG
ACCGAGATAACGTCTCTCTCCAGCCACCGGCCAACTCTTCTACTACCGCGGCTGAAGGCCCTGC
CTCCATCGCCAGGTTGACTGCTGCGGCTGCGACAGAGCCCCAGGGCCTTCATCCCTCCCGCCCCAGT
CCTGCCAGCAGGACAATGAGATTGTAGACAGCGCCTCAGTTCAGAAACGCCGCTGGACTGCGAGGTC
TCCCTGTGGTCTCTGGGACTGTGCGGAGGCCACTGTGGGAGGCTCGGGACCAAGAGCAGGACTCGT
ACGTCCGGTCCAGCCCGCAACACGGGAGCCCTGCCCGAGCTCGAAGAAGAGGCTGAGTGCGTCCC
TGATAACTGCGTC

ACGCGTACGCGGCGGCTCGAGCAGAACTCATCTCAGAAGAGGATCTGGCAGCAAATGATATCCTGGATT
ACAAGGATGACGACGATAAGGTTTAA



[View online »](#)

Protein Sequence: >RC225482 representing NM_001128325
Red=Cloning site Green=Tags(s)

MENPSPAALGKALCALLLATLGAAGQPLGGESIC SARAPAKYSITFTGKWSQTAFPKQYPLFRPPAQWS
 SLLGAAHSSDYSMWRKNQYVSNGLRDF AERGEAWALMKEIEAAGEALQSVHEVFSAPAVPSGTGQTS AEL
 EVQRRHSLVSVFVVRIVSPDWFVGVDSLDCDGRWREQAALDL YPYDAGTDSGFTFSSPNFATIPQDTV
 TEITSSSPSHPANFSFYPRKALPPIARVTLRLRQSPRAFIPPAPVLP SRDNEIVDSASVPETPLDCEV
 SLWSSWGLCGGHCGRLGTKSRTRYVRVQPANNGSPCELEEEEAECVPDNCV

TRTRPLEQKLISEEDLAANDILDYKDDDDKV

Chromatograms: https://cdn.origene.com/chromatograms/mg2780_c09.zip

Restriction Sites: SgfI-MluI

Cloning Scheme:



ACCN: NM_001128325

ORF Size: 993 bp

OTI Disclaimer: The molecular sequence of this clone aligns with the gene accession number as a point of reference only. However, individual transcript sequences of the same gene can differ through naturally occurring variations (e.g. polymorphisms), each with its own valid existence. This clone is substantially in agreement with the reference, but a complete review of all prevailing variants is recommended prior to use. [More info](#)

OTI Annotation: This clone was engineered to express the complete ORF with an expression tag. Expression varies depending on the nature of the gene.

Components: The ORF clone is ion-exchange column purified and shipped in a 2D barcoded Matrix tube containing 10ug of transfection-ready, dried plasmid DNA (reconstitute with 100 ul of water).

Reconstitution Method:

1. Centrifuge at 5,000xg for 5min.
2. Carefully open the tube and add 100ul of sterile water to dissolve the DNA.
3. Close the tube and incubate for 10 minutes at room temperature.
4. Briefly vortex the tube and then do a quick spin (less than 5000xg) to concentrate the liquid at the bottom.
5. Store the suspended plasmid at -20°C. The DNA is stable for at least one year from date of shipping when stored at -20°C.

RefSeq: [NM_001128325.2](#), [NP_001121797.1](#)

RefSeq ORF: 996 bp

Locus ID: 10417

UniProt ID: [Q9BUD6](#)

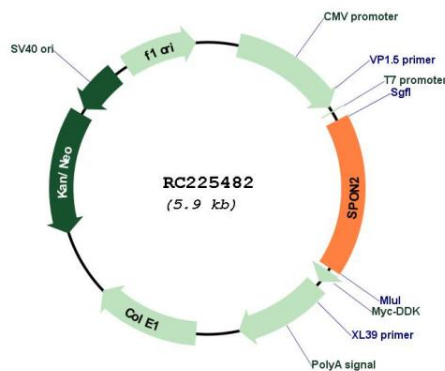
Cytogenetics: 4p16.3

Protein Families: Secreted Protein

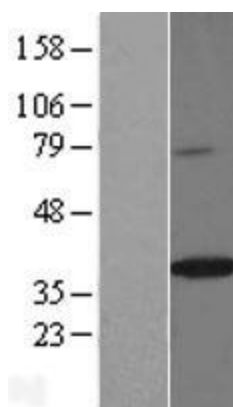
MW: 35.6 kDa

Gene Summary: Cell adhesion protein that promotes adhesion and outgrowth of hippocampal embryonic neurons. Binds directly to bacteria and their components and functions as an opsonin for macrophage phagocytosis of bacteria. Essential in the initiation of the innate immune response and represents a unique pattern-recognition molecule in the ECM for microbial pathogens (By similarity). Binds bacterial lipopolysaccharide (LPS).[UniProtKB/Swiss-Prot Function]

Product images:



Circular map for RC225482



Western blot validation of overexpression lysate (Cat# [LY426949]) using anti-DDK antibody (Cat# [TA50011-100]). Left: Cell lysates from untransfected HEK293T cells; Right: Cell lysates from HEK293T cells transfected with RC225482 using transfection reagent MegaTran 2.0 (Cat# [TT210002]).