

Product datasheet for **RC225474**

ELMOD1 (NM_001130037) Human Tagged ORF Clone

Product data:

Product Type:	Expression Plasmids
Product Name:	ELMOD1 (NM_001130037) Human Tagged ORF Clone
Tag:	Myc-DDK
Symbol:	ELMOD1
Mammalian Cell Selection:	Neomycin
Vector:	pCMV6-Entry (PS100001)
E. coli Selection:	Kanamycin (25 ug/mL)
ORF Nucleotide Sequence:	>RC225474 representing NM_001130037 Red=Cloning site Blue=ORF Green=Tags(s)

TTTTGTAATACGACTCACTATAGGGCGGCCGGAATTCGTCGACTGGATCCGGTACCGAGGAGATCTGCC
 GCC**CGATCGCC**

ATGAAGCACTTCCTGAGAATGTTGATCCAGGTATGCCTGTATTTTACTGTAAATTTCTGTGGCGCTGCC
 TGAAATTTGTAATGAGGAAGCTAACTGGAAGATGTGAACACAACGGATCTGTTATAATACCAAGCCGGG
 AGCTTCTAGAACCATGAAATCGAAACATCACTGAGGGATTCTAAAAGTAAGCTGTTGCAGACTTCTGTG
 AGTGTTCACCCGACGCTATTGAAAAACTATAGAAGATATCATGGAACCTGAAAAATTAATCCTGACG
 TAAATCCACAGCTGGGAATCTCTCTTCAGGCTTGCTTCTGCAAAATCGTTGGGTACAGGAACCTTATTGC
 AGATGTGGAAAACTGCGTAGAGAGGCCTATGATTCTGATAATCCCAACATGAAGAAATGCTTTTGAAG
 TTATGGAATTTCTGAAGCCCAATACTCCACTGGAATCTCGGATTTCTAAGCAGTGGTGTGAAATGGTT
 TCCAAGGTGATGATCCTAAACAGACTTTCGAGGAATGGGACTTCTGGGACTGTACAATTTGCAGTATTT
 CGCGGAAAGGGATGCCACAGCAGCTCAGCAGGTCTGTCTGACTCTTTCATCCGAAATGCAGCAAATTC
 AGCAAAGCAGAATGGGAGAAGAAAGGATGGATAAGGCAATTGGGTACTCATTGTGCAATTTGTGGGCATCA
 ATATACTGACCTGGCATATAATCTACTGGTCAGCGGAGCTCTAAAAACCATTTCTACAATATCGCCCC
 AGAAGCTCCAACATTGTCTCACTTTCAGCAAACATTCTGCTATTTGATGCATGAATTTCAAGTTTGG
 ATCGAAGAGGACCCCATGGACATAATGGAATTTAATCGTGTGAGGGAGAAATCCGCAAGAGGATCATCA
 AACAGCTGCAGAACCCAGACATGGCGCTGTGCCACATTTTGCTGCCTCGGAAGGTTTAATCAACATG

ACGCGTACGCGGCCGCTCGAGCAGAACTCATCTCAGAAGAGGATCTGGCAGCAATGATATCCTGGATT
 ACAAGGATGACGACGATAAGGTTTAA


[View online »](#)

Protein Sequence: >RC225474 representing NM_001130037

Red=Cloning site Green=Tags(s)

MKHFLRMLIQVCLFYFCKFLWRCLKFVMRKLTGRCELQRICYNTKPGASRTMKIETSLRDSKSKLLQTSV
 SVHPDAIEKTIEDIMELKKINPDVNPQLGISLQAQLQIVGYRNLIADVEKLRREAYSDNPQHEEMLLK
 LWKFLKPNTPLESRISKQWCEIGFGQDDPKTDFRGMGLLGLYNLQYFAERDATAAQVQLSDSLHPKCSKF
 SKAEWEKKRMDKAGISYFAIVGINITLAYNLLVSGALKTHFYNIAPAPTLSHFQQTFCYLMHEFHKFW
 IEEDPMKIDMEFNVRVREKFRKRIIKOLONPDMLCPHFAASEGLNM

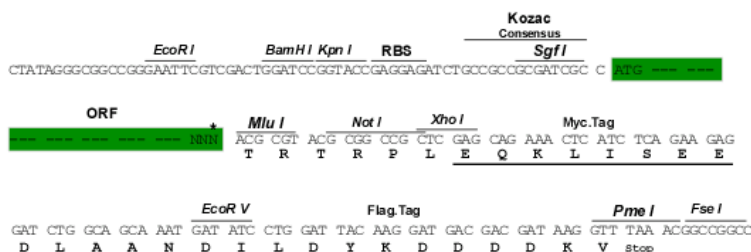
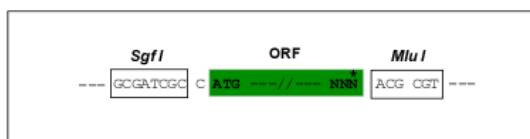
TRTRPLEQKLISEEDLAANDILDYKDDDDKV

Chromatograms: https://cdn.origene.com/chromatograms/mk8052_d09.zip

Restriction Sites: Sgfl-MluI

Cloning Scheme:

Cloning sites used for ORF Shuttling:



* The last codon before the Stop codon of the ORF

ACCN: NM 001130037

ORF Size: 978 bp

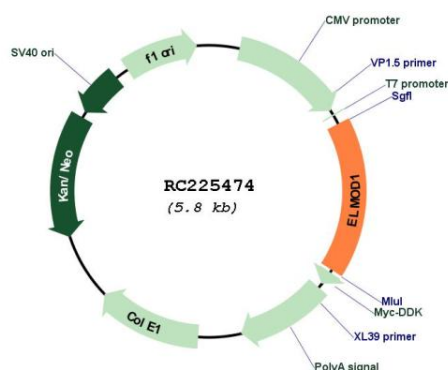
OTI Disclaimer: The molecular sequence of this clone aligns with the gene accession number as a point of reference only. However, individual transcript sequences of the same gene can differ through naturally occurring variations (e.g. polymorphisms), each with its own valid existence. This clone is substantially in agreement with the reference, but a complete review of all prevailing variants is recommended prior to use. More info

OTI Annotation: This clone was engineered to express the complete ORF with an expression tag. Expression varies depending on the nature of the gene.

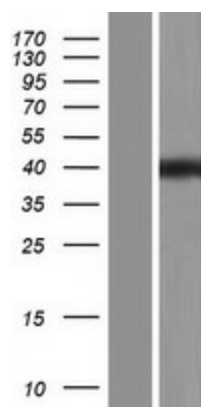
Components: The ORF clone is ion-exchange column purified and shipped in a 2D barcoded Matrix tube containing 10ug of transfection-ready, dried plasmid DNA (reconstitute with 100 ul of water).

Reconstitution Method:	1. Centrifuge at 5,000xg for 5min.
	2. Carefully open the tube and add 100ul of sterile water to dissolve the DNA.
	3. Close the tube and incubate for 10 minutes at room temperature.
	4. Briefly vortex the tube and then do a quick spin (less than 5000xg) to concentrate the liquid at the bottom.
	5. Store the suspended plasmid at -20°C. The DNA is stable for at least one year from date of shipping when stored at -20°C.
RefSeq:	<u>NM_001130037.1, NP_001123509.1</u>
RefSeq ORF:	981 bp
Locus ID:	55531
UniProt ID:	<u>Q8N336</u>
Cytogenetics:	11q22.3
MW:	37.9 kDa
Gene Summary:	Acts as a GTPase-activating protein (GAP) toward guanine nucleotide exchange factors like ARL2, ARL3, ARF1 and ARF6, but not for GTPases outside the Arf family.[UniProtKB/Swiss-Prot Function]

Product images:



Circular map for RC225474



Western blot validation of overexpression lysate (Cat# [LY427120]) using anti-DDK antibody (Cat# [TA50011-100]). Left: Cell lysates from untransfected HEK293T cells; Right: Cell lysates from HEK293T cells transfected with RC225474 using transfection reagent MegaTran 2.0 (Cat# [TT210002]).