

Product datasheet for RC225470

Tartrate Resistant Acid Phosphatase (ACP5) (NM_001111034) Human Tagged ORF Clone

Product data:

Product Type:	Expression Plasmids
Product Name:	Tartrate Resistant Acid Phosphatase (ACP5) (NM_001111034) Human Tagged ORF Clone
Tag:	Myc-DDK
Symbol:	Tartrate Resistant Acid Phosphatase
Synonyms:	HPAP; TRACP5a; TRACP5b; TRAP; TrATPase
Mammalian Cell Selection:	Neomycin
Vector:	pCMV6-Entry (PS100001)
E. coli Selection:	Kanamycin (25 ug/mL)
ORF Nucleotide Sequence:	>RC225470 representing NM_001111034 Red=Cloning site Blue=ORF Green=Tags(s)

TTTTGTAATACGACTCACTATAGGGCGGCCGGAATTCGTCGACTGGATCCGGTACCGAGGAGATCTGCC
GCC**CGATCGCC**

ATGGACATGTGGACGGCGCTGCTCATCCTGCAAGCCTTGTGCTACCCTCCCTGGCTGATGGTGCCACCC
CTGCCCTGCGCTTTGTAGCCGTGGTGACTGGGGAGGGGTCCCAATGCCCATTCACACGGCCCGGGA
AATGGCCAATGCCAAGGAGATCGCTCGGACTGTGCAGATCCTGGGTGCAGACTTCATCCTGTCTAGGG
GACAATTTTTACTTCACTGGTGTGCAAGACATCAATGACAAGAGGTTCCAGGAGACCTTTGAGGACGTAT
TCTCTGACCGCTCCCTTCGCAAAGTGCCCTGGTACGTGCTAGCCGAAACCATGACCACCTTGGCAATGT
CTCTGCCAGATTGCATACTCTAAGATCTCCAAGCGCTGGAATTCGCCAGCCCTTCTACCGCCTGCAC
TTCAAGATCCACAGACCAATGTGTCTGTGGCCATTTTTATGCTGGACACAGTGACACTATGTGGCAACT
CAGATGACTTCCTCAGCCAGCAGCCTGAGAGGCCCCGAGACGTGAAGCTGGCCCGCACACAGCTGTCCTG
GCTCAAGAAACAGCTGGCGGGCCAGGGAGGACTACGTGCTGGTGGCTGGCCACTACCCCGTGTGGTCC
ATAGCCGAGCACGGCCCTACCCACTGCCTGGTCAAGCAGCTACGGCCACTGCTGGCCACATACGGGGTCA
CTGCCTACCTGTGCGGCCACGATCAAACTGTCAGTACCTGCAAGATGAGAATGGCGTGGGCTACGTGCT
GAGTGGGGCTGGGAATTCATGGACCCCTCAAAGCGGCACCAGCGCAAGGTCCCCAACGGCTATCTGCGC
TTCCACTATGGGACTGAAGACTCACTGGGTGGCTTTGCCTATGTGGAGATCAGCTCCAAAGAGATGACTG
TCACTTACATCGAGGCCCTCGGGCAAGTCCCTCTTAAGACCAGGCTGCCGAGGCGAGCCAGGCC

ACGCGTACGCGGCCGCTCGAGCAGAAACTCATCTCAGAAGAGGATCTGGCAGCAATGATATCCTGGATT
ACAAGGATGACGACGATAAGGTTTAA



[View online »](#)

Protein Sequence: >RC225470 representing NM_001111034
 Red=Cloning site Green=Tags(s)

MDMWTALLILQALLLPSLADGATPALRFVAVGDWGGVNPAPFHTAREMANAKEIARTVQILGADFILSLG
 DNFYFTGVQDINDKRFQETFEDVFSDRSLRKVPWYVLAGNHDLGNVSAQIAYSKI SKRWNFPSPFYRLH
 FKIPQTNVSVAI FMLDVTLCGNSDDFLSQQPERPRDKLARTQLSWLKKQLAAAREDYVLVAGHYPVWS
 IAEHGPTHCLVKQLRPLLATYGVTA YL CGHDHNLQYLQDENGVG YVLSGAGNFMDP SKRHQRKVPNGYLR
 FHYGTEDSLGGFAYVEISSKEMTVTYIEASGKSLFKTRLPRRARP

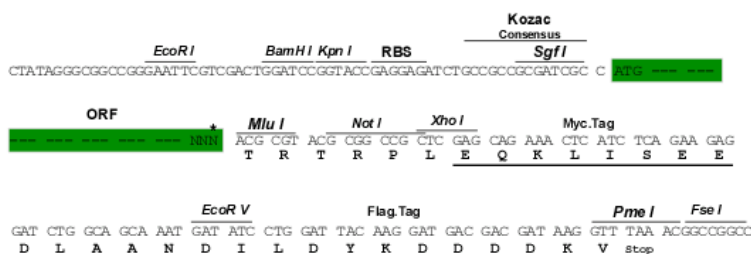
TRTRPLEQKLISEEDLAANDILDYKDDDDKVV

Chromatograms: https://cdn.origene.com/chromatograms/mk8076_b02.zip

Restriction Sites: SgfI-MluI

Cloning Scheme:

Cloning sites used for ORF Shutting:



* The last codon before the Stop codon of the ORF

ACCN: NM_001111034

ORF Size: 975 bp

OTI Disclaimer: The molecular sequence of this clone aligns with the gene accession number as a point of reference only. However, individual transcript sequences of the same gene can differ through naturally occurring variations (e.g. polymorphisms), each with its own valid existence. This clone is substantially in agreement with the reference, but a complete review of all prevailing variants is recommended prior to use. [More info](#)

OTI Annotation: This clone was engineered to express the complete ORF with an expression tag. Expression varies depending on the nature of the gene.

Components: The ORF clone is ion-exchange column purified and shipped in a 2D barcoded Matrix tube containing 10ug of transfection-ready, dried plasmid DNA (reconstitute with 100 ul of water).

Reconstitution Method:

1. Centrifuge at 5,000xg for 5min.
2. Carefully open the tube and add 100ul of sterile water to dissolve the DNA.
3. Close the tube and incubate for 10 minutes at room temperature.
4. Briefly vortex the tube and then do a quick spin (less than 5000xg) to concentrate the liquid at the bottom.
5. Store the suspended plasmid at -20°C. The DNA is stable for at least one year from date of shipping when stored at -20°C.

RefSeq: [NM_001111034.3](#)

RefSeq ORF: 978 bp

Locus ID: 54

UniProt ID: [P13686](#)

Cytogenetics: 19p13.2

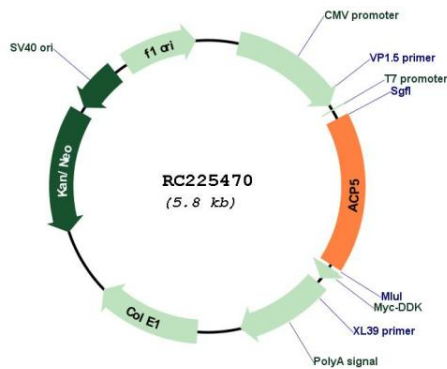
Protein Families: Druggable Genome

Protein Pathways: Lysosome, Riboflavin metabolism

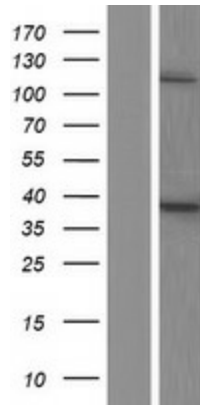
MW: 36.6 kDa

Gene Summary: This gene encodes an iron containing glycoprotein which catalyzes the conversion of orthophosphoric monoester to alcohol and orthophosphate. It is the most basic of the acid phosphatases and is the only form not inhibited by L(+)-tartrate. [provided by RefSeq, Aug 2008]

Product images:



Circular map for RC225470



Western blot validation of overexpression lysate (Cat# [LY426340]) using anti-DDK antibody (Cat# [TA50011-100]). Left: Cell lysates from untransfected HEK293T cells; Right: Cell lysates from HEK293T cells transfected with RC225470 using transfection reagent MegaTran 2.0 (Cat# [TT210002]).