

Product datasheet for **RC225466**

FKBP6 (NM_001135211) Human Tagged ORF Clone

Product data:

Product Type: Expression Plasmids
Product Name: FKBP6 (NM_001135211) Human Tagged ORF Clone
Tag: Myc-DDK
Symbol: FKBP6
Synonyms: FKBP36
Mammalian Cell Selection: Neomycin
Vector: pCMV6-Entry (PS100001)
E. coli Selection: Kanamycin (25 ug/mL)
ORF Nucleotide Sequence: >RC225466 representing NM_001135211
Red=Cloning site Blue=ORF Green=Tags(s)

TTTTGTAATACGACTCACTATAGGGCGCCGGGAATTCGTCGACTGGATCCGGTACCGAGGAGATCTGCC
GCC**CGCATCGCC**

ATGAGTGCCTCCTCGTGGCCCCAGAATGGAATGCCGCCGTCGTCCCTGTACGAGCGGTTAAGTCAGAGGA
TGCTGGACATCTCGGGGACCGGGCGTGCTGAAGGACGTCATCCGAGAAGGAGCTGGAGACCTAGTGGC
GCCTGATGCTTCGGTGTAGTAAATACTCGGGATACCTGGAACACATGGACAGACCCCTCGATTCTAAT
TACTTTAGGAAAACCTCTCGGCTAATGAACTTGGAGAGGATATTACACTGTGGGGCATGGAGCTGGCC
TTCTGAGCATGCGGAGAGGAGAGCTGGCCAGGTTTCTGTTCAAACCGAACTACGCCTATGGAACGCTGGG
CTGCCCTCCCTTGATCCCCCAAACACCACTGTCTGTTGAGATTGAGCTGCTTGACTTCTGGACTGT
GCTGAGTCAGACAAGTTTTGTGCTCTCTCAGCTGAGCAGCAAGACCAATTTCCACTTCAGAAGGTCCTGA
AAGTGGCAGCTACGGAACGGGAGTTTGGCAACTACCTTTCCGCCAGAATCGTTTCTATGATGCCAAAGT
GAGATAAAAAGGGCCCTGTTGCTTCTGCGCCGGCGATCAGCACCCCTGAAGAGCAGCACCTGGTGGAG
GCCGCCAAGCTTCTGTTCTCCTGAACCTGTCTTTACATACCTGAAGCTAGACCGACCCACCATAGCCC
TGTGCTATGGAGAGCAGGCTTTGATCATTGACCAAAAAGAATGCCAAGGCCCTCTCAGGTGTGGACAGGC
TTGTCTTCTCCTGACTGAGTATCAAAGGCCCGGATTTTCTAGTTCGAGCCAGAAGGAGCAACCCCTTC
AATCATGACATCAATAATGAGCTGAAGAACTGGCTAGCTGTTACAGGGACTATGTGGATAAAGAGAAAAG
AAATGTGGCACCGCATGTTTCGCGCCCTGTGGCGATGTTTCTACAGCAGGAGAAAAGT

ACGCGTACGCGGCCGCTCGAGCAGAAACTCATCTCAGAAGAGGATCTGGCAGCAAATGATATCCTGGATT
ACAAGGATGACGACGATAAGGTTTAA



[View online »](#)

Protein Sequence: >RC225466 representing NM_001135211
Red=Cloning site Green=Tags(s)

MSASSWPQNGMPPSSLYERLSQRMLDISGDRGVLKDVIREGAGDLVAPDASVLVKYSGYLEHMDRPFDSN
 YFRKTPRLMKLGEDITLWGMELGLLSMRRGELARFLFKPNYAYGTLGCPPLIPPNTTVLFEIELLDLDC
 AESDKFCALSAEQDQFPLQKVLKVAATEREFGNYLFRQNRFYDAKVRYKRALLLLRRRSAPPEEQHLVE
 AAKLPVLLNLSFTYLKLD RPTIALCYGEQALIIDQKNAKALFRCGQAQLLLTEYQKARDFLVRAQKEQPF
 NHDINNELKKLASCYRDYVDKEKEMWHRMFAPCGDGSTAGES

TRTRPLEQKLISEEDLAANDILDYKDDDDKV

Chromatograms: https://cdn.origene.com/chromatograms/mk8052_b05.zip

Restriction Sites: SgfI-MluI

Cloning Scheme:



ACCN: NM_001135211

ORF Size: 966 bp

OTI Disclaimer: The molecular sequence of this clone aligns with the gene accession number as a point of reference only. However, individual transcript sequences of the same gene can differ through naturally occurring variations (e.g. polymorphisms), each with its own valid existence. This clone is substantially in agreement with the reference, but a complete review of all prevailing variants is recommended prior to use. [More info](#)

OTI Annotation: This clone was engineered to express the complete ORF with an expression tag. Expression varies depending on the nature of the gene.

Components: The ORF clone is ion-exchange column purified and shipped in a 2D barcoded Matrix tube containing 10ug of transfection-ready, dried plasmid DNA (reconstitute with 100 ul of water).

Reconstitution Method:

1. Centrifuge at 5,000xg for 5min.
2. Carefully open the tube and add 100ul of sterile water to dissolve the DNA.
3. Close the tube and incubate for 10 minutes at room temperature.
4. Briefly vortex the tube and then do a quick spin (less than 5000xg) to concentrate the liquid at the bottom.
5. Store the suspended plasmid at -20°C. The DNA is stable for at least one year from date of shipping when stored at -20°C.

RefSeq: [NM_001135211.1](#), [NP_001128683.1](#)

RefSeq ORF: 969 bp

Locus ID: 8468

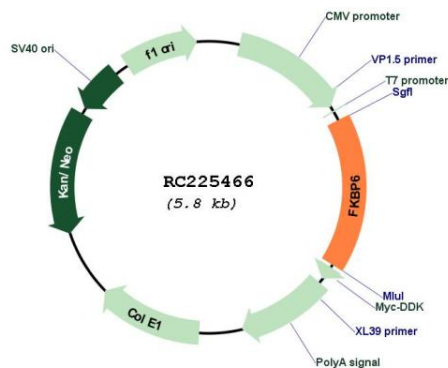
UniProt ID: [O75344](#)

Cytogenetics: 7q11.23

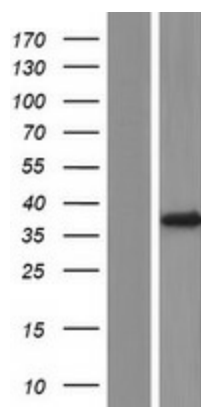
MW: 36.7 kDa

Gene Summary: The protein encoded by this gene is a cis-trans peptidyl-prolyl isomerase that may function in immunoregulation and basic cellular processes involving protein folding and trafficking. This gene is located in a chromosomal region that is deleted in Williams-Beuren syndrome. Defects in this gene may cause male infertility. There are multiple pseudogenes for this gene located nearby on chromosome 7. Alternative splicing results in multiple transcript variants. [provided by RefSeq, Jul 2013]

Product images:



Circular map for RC225466



Western blot validation of overexpression lysate (Cat# [LY427592]) using anti-DDK antibody (Cat# [TA50011-100]). Left: Cell lysates from untransfected HEK293T cells; Right: Cell lysates from HEK293T cells transfected with RC225466 using transfection reagent MegaTran 2.0 (Cat# [TT210002]).