

## Product datasheet for RC225450

### JMJD7 (NM\_001114632) Human Tagged ORF Clone

#### Product data:

Product Type:	Expression Plasmids
Product Name:	JMJD7 (NM_001114632) Human Tagged ORF Clone
Tag:	Myc-DDK
Symbol:	JMJD7
Mammalian Cell Selection:	Neomycin
Vector:	pCMV6-Entry (PS100001)
E. coli Selection:	Kanamycin (25 ug/mL)
ORF Nucleotide Sequence:	>RC225450 representing NM_001114632 Red=Cloning site Blue=ORF Green=Tags(s)

TTTTGTAATACGACTCACTATAGGGCGGCCGGGAATTCGTCGACTGGATCCGGTACCGAGGAGATCTGCC  
GCC**CGATCGCC**

ATGGCGGAGGCGGCTTTGGAAGCCGTGCGGAGCGAGTTACGAGAATCCCGGCCGCTGCAAGGGAGCTCT  
GCGTGCCCTCTTGCTGTGCCCTACCTGGACAAACCCCAACTCCGCTCCACTTCTACCGGGACTGGGTCTG  
CCCCAACAGGCCGTCATTATCCGCAACGCTCTGCAGCACTGGCCGGCCCTCCAGAAGTGGTCCCTCCC  
TATTTAGAGCCACAGTGGGCTCCACAGAGGTGAGTGTGGCCGTGACCCAGATGGTTACGCGGATGCC  
TGAGAGGGGATCGCTTCATGATGCCAGCTGAGCGCCGCTGCCCTGAGCTTCGTGCTGGATGTGCTGGA  
GGCCCGGCCAGCACCCCTGGAGTCCTCTATGTGCAAGAAGCAGTGTCCAACCTGCCAGCGAGCTGCC  
CAGCTGCTGCCTGATCTGGAATCCCATGTGCCCTGGCCCTCCGAAGCCCTGGGAAAGATGCCCGATGCTG  
TGAACCTCTGGCTGGGGAGGCGGCTGCAGTGACTTCTTTGCACAAGGACCACTATGAGAACCTCTACTG  
CGTGGTCTCAGGAGAGAAGCATTTCCTGTTCCATCCGCCAGCGACCGGCCCTTCATCCCCTATGAGCTG  
TACACGCCGCAACCTACCAGCTAACTGAAGAGGGCACCTTTAAGGTGGTGGATGAAGAGGCCATGGAGA  
AGGTGCCCTGGATCCCACTGGACCCCTTGGCGCCAGACCTAGCACGGTACCCTAGTTACAGTCAGGCCCA  
GGCCCTTCGCTGCACGGTGGGGCCGGTGAAGTGTCTATCTGCCGCTCTGTGGTTCCACCACGTCAG  
CAGTCCCAGGGCTGCATCGCAGTGAATTTCTGGTATGACATGGAATACGACCTCAAGTATAGTTACTTCC  
AGCTGCTCGACTCCCTACCAAGCTTCAGGCCTTAC

**ACGCGT**ACGCGGCCGCTCGAGCAGAACTCATCTCAGAAGAGGATCTGGCAGCAAATGATATCCTGGATT  
ACAAGGATGACGACGATAAGGTTTAA



[View online »](#)

**Protein Sequence:** >RC225450 representing NM\_001114632  
Red=Cloning site Green=Tags(s)

MAEAALEAVRSELREFPAAARELCVPLAVPYLDKPPTPLHFYRDWVCPNRPCIIRNALQHPALQKWSLP  
 YFRATVGSTEVSVAVTPDGYADAVRGDRFMMPAERRLPLSFVLDVLEGRAQHPGVLVYQKQCSNLPSELP  
 QLLPDLESHVPWASEALGKMPDAVNFWLGEAAAVTSLHKDHYENLYCVVSGEKHFLFHPPSDRPFIPYEL  
 YTPATYQLTEEGTFKVVDEEAMEKVPWIPLDPLAPDLARYPSYSQAQALRCTVRAGEMLYLPALWFHHVQ  
 QSQGCIAVNFWYDMEYDLKYSYFQLLDSLTKASGLD

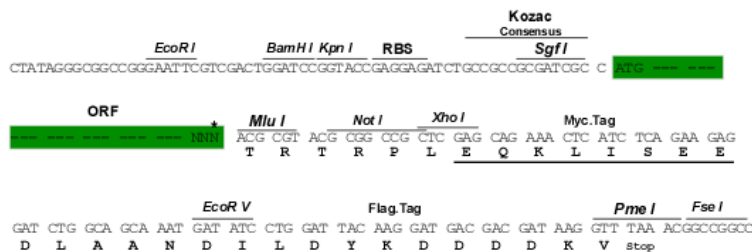
TRTRPLEQKLISEEDLAANDILDYKDDDDKV

**Chromatograms:** [https://cdn.origene.com/chromatograms/mk8033\\_d06.zip](https://cdn.origene.com/chromatograms/mk8033_d06.zip)

**Restriction Sites:** SgfI-MluI

**Cloning Scheme:**

Cloning sites used for ORF Shuttling:



\* The last codon before the Stop codon of the ORF

**ACCN:** NM\_001114632

**ORF Size:** 948 bp

**OTI Disclaimer:** The molecular sequence of this clone aligns with the gene accession number as a point of reference only. However, individual transcript sequences of the same gene can differ through naturally occurring variations (e.g. polymorphisms), each with its own valid existence. This clone is substantially in agreement with the reference, but a complete review of all prevailing variants is recommended prior to use. [More info](#)

**OTI Annotation:** This clone was engineered to express the complete ORF with an expression tag. Expression varies depending on the nature of the gene.

**Components:** The ORF clone is ion-exchange column purified and shipped in a 2D barcoded Matrix tube containing 10ug of transfection-ready, dried plasmid DNA (reconstitute with 100 ul of water).

**Reconstitution Method:**

1. Centrifuge at 5,000xg for 5min.
2. Carefully open the tube and add 100ul of sterile water to dissolve the DNA.
3. Close the tube and incubate for 10 minutes at room temperature.
4. Briefly vortex the tube and then do a quick spin (less than 5000xg) to concentrate the liquid at the bottom.
5. Store the suspended plasmid at -20°C. The DNA is stable for at least one year from date of shipping when stored at -20°C.

**RefSeq:** [NM\\_001114632.2](#)

**RefSeq ORF:** 951 bp

**Locus ID:** 100137047

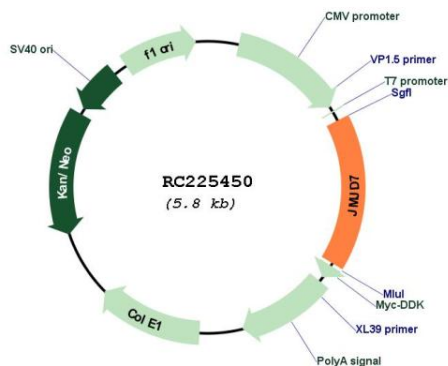
**UniProt ID:** [P0C870](#)

**Cytogenetics:** 15q15.1

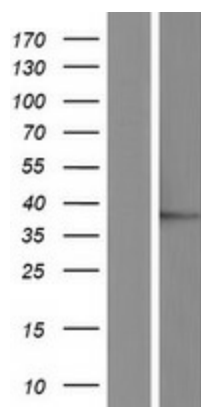
**MW:** 35.8 kDa

**Gene Summary:** This gene encodes a highly conserved protein with a JmjC domain, which are part of the cupin metalloenzyme superfamily. JmjC proteins may function as 2-oxoglutarate-Fe(II)-dependent dioxygenases. Most tissues also express read-through transcripts from this gene into the downstream phospholipase A2, group IVB (cytosolic) gene, some of which may encode fusion proteins combining the N-terminus of this protein with the phospholipase A2, group IVB protein. [provided by RefSeq, Jul 2008]

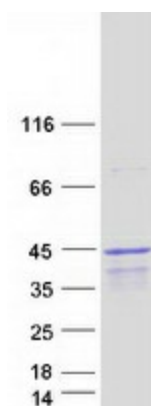
## Product images:



Circular map for RC225450



Western blot validation of overexpression lysate (Cat# [LY426498]) using anti-DDK antibody (Cat# [TA50011-100]). Left: Cell lysates from untransfected HEK293T cells; Right: Cell lysates from HEK293T cells transfected with RC225450 using transfection reagent MegaTran 2.0 (Cat# [TT210002]).



Coomassie blue staining of purified JMJD7 protein (Cat# [TP325450]). The protein was produced from HEK293T cells transfected with JMJD7 cDNA clone (Cat# RC225450) using MegaTran 2.0 (Cat# [TT210002]).