

Product datasheet for **RC225433**

RRAD (NM_001128850) Human Tagged ORF Clone

Product data:

Product Type:	Expression Plasmids
Product Name:	RRAD (NM_001128850) Human Tagged ORF Clone
Tag:	Myc-DDK
Symbol:	RRAD
Synonyms:	RAD; RAD1; REM3
Mammalian Cell Selection:	Neomycin
Vector:	pCMV6-Entry (PS100001)
E. coli Selection:	Kanamycin (25 ug/mL)
ORF Nucleotide Sequence:	>RC225433 representing NM_001128850 Red=Cloning site Blue=ORF Green=Tags(s)

TTTTGTAATACGACTCACTATAGGGCGGCCGGAATTCGTCGACTGGATCCGGTACCGAGGAGATCTGCC
GCC**CGATCGCC**

ATGACCCTGAACGGCGGGCAGCGGAGCGGGCGGGAGCCGCGGTGGGGCCAGGAGCGCGAGCGCCGTC
GGGGCAGCACACCCTGGGGCCCCGCCCGCTGCACCGCCGAGCATGCCGGTGGACGAGCGCGACCT
GCAGGGCGCGCTGACCCCGGGTGCCTGACGGCGCCCGGGCGGGACGGGGACCCAGGGTCCCAGGCTG
GACTGGCCCGAGGACTCCGAGGACTCGCTCAGCTCAGGGGGCAGCGACTCAGACGAGAGCGTTTACAAGG
TGCTGCTGCTGGGGCGCCCGGGTGGCAAGAGCGCCCTGGCGCGCATCTTCGGCGGTGTGGAGGACGG
GCCTGAAGCAGAGGCAGCAGGGCACACCTATGATCGCTCCATTGTAGTGGACGGAGAAGAGGCATCACTC
ATGGTCTACGACATTTGGGAGCAGGACGGGGCCGCTGTTGCCCGCCACTGCATGGCCATGGGGGATG
CCTATGTCATTGTGTACTCAGTGACGGACAAGGGCAGCTTCGAGAAGGCCTCAGAAGTCCGGTCCAGCT
GCGGCGTGACGGCAAACAGATGATGTGCCATCATCCTCGTGGGCAACAAGAGCGACCTGGTGCCTCT
CGTGAGGTCTCGGTGGATGAGGGCCGGGCTGCGCGGTGGTCTTTGACTGCAAGTTTCATTGAGACATCAG
CGGCATTGCACCACAATGTCCAGGCGTGTTTGAAGGTGTCGTGCCAGATACGCTGCCAGGGACAG
CAAAGAAGCCAACGCACGACGCAAGCAGGACCCGGAGGCGAGAGGCCTTGGCAAAAAGGCGAAGCGC
TTCTTGGGCGCATCGTAGCTCGTAACAGCCGAAGATGGCCTTTCGCGCAAATCCAAGTCTGCCACG
ACCTCTCGTTCTC

ACGCGTACGCGGCCGCTCGAGCAGAACTCATCTCAGAAGAGGATCTGGCAGCAAATGATATCCTGGATT
ACAAGGATGACGACGATAAGGTTTAA



[View online »](#)

Protein Sequence: >RC225433 representing NM_001128850
Red=Cloning site Green=Tags(s)

MTLNNGGSGAGGSRGGGQERERRRGSTPWGPAPPLHRRSMPVDERDLQAALTPGALTAAAAGTGTQGPRL
 DWPEDESLSLSSGGSDSESVYKVLVLLGAPGVGKSALARIFGGVEDGPEAEAAGHTYDRSIVVDGEEASL
 MYYDIWEQDGGRWLPGHCMAMGDAYVIVYSVTDKGSFEKASELRVQLRRARQTDVPIILVGNKSDLVRS
 REVSVDEGRACAVVFDCKFIETSAALHHNVQALFEGVVRQIRLRRDSKEANARRQAGTRRRESLGGKAKR
 FLGRIVARNRSMKMAFRAKSKSCHDL SVL

TRTRPLEQKLISEEDLAANDILDYKDDDDKV

Chromatograms: https://cdn.origene.com/chromatograms/mg3796_a07.zip

Restriction Sites: SgfI-MluI

Cloning Scheme:



ACCN: NM_001128850

ORF Size: 924 bp

OTI Disclaimer: The molecular sequence of this clone aligns with the gene accession number as a point of reference only. However, individual transcript sequences of the same gene can differ through naturally occurring variations (e.g. polymorphisms), each with its own valid existence. This clone is substantially in agreement with the reference, but a complete review of all prevailing variants is recommended prior to use. [More info](#)

OTI Annotation: This clone was engineered to express the complete ORF with an expression tag. Expression varies depending on the nature of the gene.

Components: The ORF clone is ion-exchange column purified and shipped in a 2D barcoded Matrix tube containing 10ug of transfection-ready, dried plasmid DNA (reconstitute with 100 ul of water).

Reconstitution Method:

1. Centrifuge at 5,000xg for 5min.
2. Carefully open the tube and add 100ul of sterile water to dissolve the DNA.
3. Close the tube and incubate for 10 minutes at room temperature.
4. Briefly vortex the tube and then do a quick spin (less than 5000xg) to concentrate the liquid at the bottom.
5. Store the suspended plasmid at -20°C. The DNA is stable for at least one year from date of shipping when stored at -20°C.

RefSeq: [NM_001128850.1](#), [NP_001122322.1](#)

RefSeq ORF: 927 bp

Locus ID: 6236

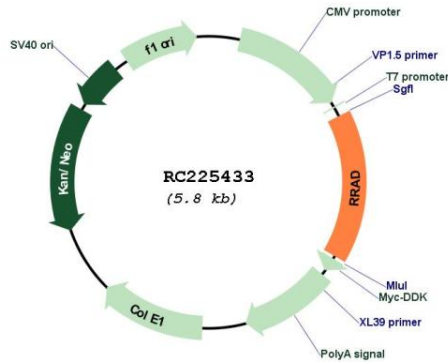
UniProt ID: [P55042](#)

Cytogenetics: 16q22.1

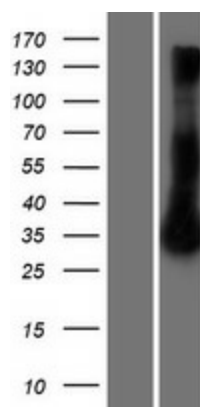
MW: 33.1 kDa

Gene Summary: May play an important role in cardiac antiarrhythmia via the strong suppression of voltage-gated L-type Ca(2+) currents. Regulates voltage-dependent L-type calcium channel subunit alpha-1C trafficking to the cell membrane (By similarity). Inhibits cardiac hypertrophy through the calmodulin-dependent kinase II (CaMKII) pathway. Inhibits phosphorylation and activation of CAMK2D.[UniProtKB/Swiss-Prot Function]

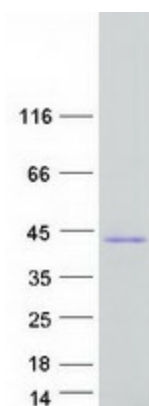
Product images:



Circular map for RC225433



Western blot validation of overexpression lysate (Cat# [LY427008]) using anti-DDK antibody (Cat# [TA50011-100]). Left: Cell lysates from untransfected HEK293T cells; Right: Cell lysates from HEK293T cells transfected with RC225433 using transfection reagent MegaTran 2.0 (Cat# [TT210002]).



Coomassie blue staining of purified RRAD protein (Cat# [TP325433]). The protein was produced from HEK293T cells transfected with RRAD cDNA clone (Cat# RC225433) using MegaTran 2.0 (Cat# [TT210002]).