

Product datasheet for **RC225426**

Trypsin (PRSS3) (NM_007343) Human Tagged ORF Clone

Product data:

Product Type: Expression Plasmids
Product Name: Trypsin (PRSS3) (NM_007343) Human Tagged ORF Clone
Tag: Myc-DDK
Symbol: Trypsin
Synonyms: MTG; PRSS4; T9; TRY3; TRY4
Mammalian Cell Selection: Neomycin
Vector: pCMV6-Entry (PS100001)
E. coli Selection: Kanamycin (25 ug/mL)
ORF Nucleotide Sequence: >RC225426 representing NM_007343
 Red=Cloning site Blue=ORF Green=Tags(s)

TTTTGTAATACGACTCACTATAGGGCGGCCGGAATTCGTCGACTGGATCCGGTACCGAGGAGATCTGCC
 GCC**CGATCGCC**

ATGTGCGGACCTGACGACAGATGCCCCGACGCTGGCCGGGACCGGAAGGGCGGTCAAGTGTGAAAGG
 GTCTGGCGGCTGCCAGGCCTGGCAGAGTGGAGCGGGCGGGCGCAGCGGGCGGGCGGGCCTGGAGCT
 GCACCCGCTTCTGGGTGGACGCACTTGGCGAGCGCGGGATGCAGACGGCTGCGAGGCGCTGGGCACA
 GTTGCTGTCCCCTTTGACGATGATGACAAGATTGTTGGGGCTACACCTGTGAGGAGAATTCTCTCCCCT
 ACCAGGTGTCCTGAATTCTGGCTCCCCTTCTGCGGTGGCTCCCTCATCAGCGAACAGTGGGTGGTATC
 AGCAGCTCACTGCTACAAGACCCGCATCCAGGTGAGACTGGGAGAGCACAAACATCAAAGTCTGGAGGGG
 AATGAGCAGTTTCAATGCGGCCAAGATCATCCGCCACCTAAATACAACAGGGACACTCTGGACAATG
 ACATCATGCTGATCAAATCTCCTCACCTGCCGTCAATGCCCGGTGTCCACCATCTCTGCCCCAC
 CGCCCCCTCAGCTGCTGGCACTGAGTGCCTCATCTCCGGCTGGGGCAACACTCTGAGCTTTGGTGTGAC
 TACCCAGACGAGCTGAAGTGCCTGGATGCTCCGGTGTGACCCAGGCTGAGTGTAAAGCCTCCTACCCTG
 GAAAGATTACCAACAGCATGTTCTGTGTGGCTCCTTGAGGGAGGCAAGGATTCCTGCCAGCGTGACTC
 TGGTGGCCCTGTGGTCTGCAACGGACAGCTCCAAGGAGTTGTCTCCTGGGGCCATGGCTGTGCCTGGAAG
 AACAGGCCCTGGAGTCTACACCAAGGTCTACAACATATGTGGACTGGATTAAGGACACCATCGCTGCCAACA
 GC

ACGCGTACGCGGCCGCTCGAGCAGAAACTCATCTCAGAAGAGGATCTGGCAGCAAATGATATCCTGGATT
 ACAAGGATGACGACGATAAGGTTTAA



[View online »](#)

Protein Sequence: >RC225426 representing NM_007343
Red=Cloning site Green=Tags(s)

MCGPDDRCPARWPGPRAVKCGKGLAAARPGRVERGGAQRGGAGLELHPLLGGRTWRAARDADGCEALGT
 VAVPFDDDDKIVGGYTCEENSLPYQVSLNSGSHFCGGSLSISEQWVYSAAHCYKTRIQVRLGEHNIKVLEG
 NEQFINAAKIIRHPKYNRDLDNDIMLIKLSPPAVINARVSTISLPTAPPAAGTECLISGWGNTLSFGAD
 YPDELKCLDAPVLTQAECKASYPGKITNSMFCVGFLEGGKDSCQRDSGGPVVVCNGQLQGVVSWHGCAWK
 NRPGVYTKVYNYVDWIKDTIAANS

TRTRPLEQKLISEEDLAANDILDYKDDDDKV

Chromatograms: https://cdn.origene.com/chromatograms/mk8033_d10.zip

Restriction Sites: SgfI-MluI

Cloning Scheme:



ACCN: NM_007343

ORF Size: 912 bp

OTI Disclaimer: The molecular sequence of this clone aligns with the gene accession number as a point of reference only. However, individual transcript sequences of the same gene can differ through naturally occurring variations (e.g. polymorphisms), each with its own valid existence. This clone is substantially in agreement with the reference, but a complete review of all prevailing variants is recommended prior to use. [More info](#)

OTI Annotation: This clone was engineered to express the complete ORF with an expression tag. Expression varies depending on the nature of the gene.

Components: The ORF clone is ion-exchange column purified and shipped in a 2D barcoded Matrix tube containing 10ug of transfection-ready, dried plasmid DNA (reconstitute with 100 ul of water).

Reconstitution Method:

1. Centrifuge at 5,000xg for 5min.
2. Carefully open the tube and add 100ul of sterile water to dissolve the DNA.
3. Close the tube and incubate for 10 minutes at room temperature.
4. Briefly vortex the tube and then do a quick spin (less than 5000xg) to concentrate the liquid at the bottom.
5. Store the suspended plasmid at -20°C. The DNA is stable for at least one year from date of shipping when stored at -20°C.

RefSeq: [NM_007343.3](#)

RefSeq ORF: 420 bp

Locus ID: 5646

UniProt ID: [P35030](#)

Cytogenetics: 9p13.3

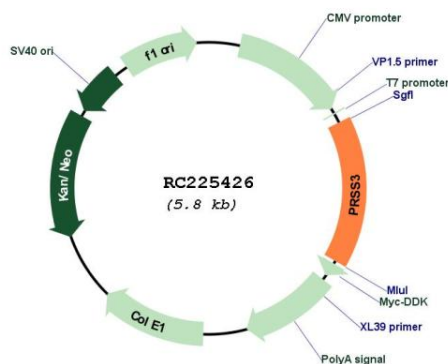
Protein Families: Druggable Genome, Protease, Secreted Protein

Protein Pathways: Neuroactive ligand-receptor interaction

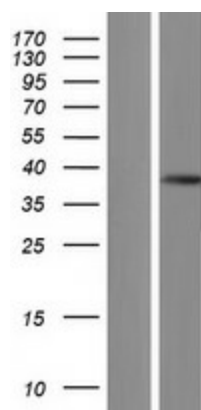
MW: 32.3 kDa

Gene Summary: This gene encodes a trypsinogen, which is a member of the trypsin family of serine proteases. This enzyme is expressed in the brain and pancreas and is resistant to common trypsin inhibitors. It is active on peptide linkages involving the carboxyl group of lysine or arginine. This gene is localized to the locus of T cell receptor beta variable orphans on chromosome 9. Four transcript variants encoding different isoforms have been described for this gene. [provided by RefSeq, Oct 2010]

Product images:



Circular map for RC225426



Western blot validation of overexpression lysate (Cat# [LY429349]) using anti-DDK antibody (Cat# [TA50011-100]). Left: Cell lysates from untransfected HEK293T cells; Right: Cell lysates from HEK293T cells transfected with RC225426 using transfection reagent MegaTran 2.0 (Cat# [TT210002]).