

Product datasheet for **RC225425**

RELL2 (NM_001130029) Human Tagged ORF Clone

Product data:

Product Type:	Expression Plasmids
Product Name:	RELL2 (NM_001130029) Human Tagged ORF Clone
Tag:	Myc-DDK
Symbol:	RELL2
Synonyms:	C5orf16
Mammalian Cell Selection:	Neomycin
Vector:	pCMV6-Entry (PS100001)
E. coli Selection:	Kanamycin (25 ug/mL)
ORF Nucleotide Sequence:	>RC225425 ORF sequence Red=Cloning site Blue=ORF Green=Tags(s)

TTTTGTAATACGACTCACTATAGGGCGGCCGGAATTCGTCGACTGGATCCGGTACCGAGGAGATCTGCC
GCC**CGATCGCC**

ATGTCGGAACCACAGCCTGACCTGGAACCGCCCAACATGGGCTATATATGCTCTTCTGCTTGTGCTGG
TCTTCTTCTCATGGCCTGGTAGGCTTCATGATCTGCCACGTGCTCAAGAAGAAGGGCTACCGCTGCCG
CACGTCGAGGGGCTCTGAGCCTGACGATGCCAGCTTCAGCCCCCTGAGGACGATGACATGAATGAGGAC
ACAGTAGAGAGGATTGTCGCTGCATCATCCAGAATGAAGCCAATGCTGAGGCCTTGAAGGAGATGCTGG
GGGACAGTGAAGGAGAAGGGACAGTGCAGCTGTCCAGTGTGGATGCCACCTCCAGCCTGCAGGACGGAGC
CCCTCCCATCATCACAGTGCACCTGGGCCCTGCAGCCCTTGATCCATTGCAGCCGCAAGAGG
CCTCCACTTGTCCGTGAGGGACGCTCCAAGGAAGGAAAAAGCCGCCCCCGACAGGGGAGACCCTGTGT
TCTCTGTGGGCAGGTTCCGGGTGACACACATTGAGAAGCGCTATGGACTGCACGAACACCGTGATGGCTC
CCCCACAGACAGGAGCTGGGCTCTCGTGGGGACAGGACCCAGGGGGTGGTCAAGGGTCTGGGGGAGGG
CAGCCAAGGCAGGGATGCCTGCCATGGAGAGGCTGCCCCCTGAGAGGCCACAGCCCAGGTCCTAGCCA
GCCCCCAGTACAGAATGGAGGACTCAGGGACAGCAGCCTAACCCCTCGTGCCTGAAGGGAACCCAG
AGCTTCTGCAGAGCCAACACTGAGGGCCGAGGGAGGGGCCCAAGCCCAGGGCTGCCACTCAAGAGGCA
AATGGGGAGCCAAGCAAACCAGACACTTCTGATCACCAGGTGTCTCTACCACAGGGAGCAGGGAGTATG

ACGCGTACGCGGCCGCTCGAGCAGAAACTCATCTCAGAAGAGGATCTGGCAGCAAATGATATCCTGGATT
ACAAGGATGACGACGATAAGGTTTAA



[View online »](#)

Protein Sequence: >RC225425 protein sequence
Red=Cloning site Green=Tags(s)

MSEPQPDLEPPQHGLYMLFLLLVFFLMGLVGFMI CHVLK KKKGYRCRTSRGSEPDDAQLQPPEDDDMNED
TVERIVRCIIQNEANAELKEMLDSEGETVQLSSVDATSSLQDGAPSHHHTVHLGPAAPCIHCSRKR
PPLVRQGRSKEGKSRPRTGETTVF SVGRFRVTHIEKRYGLHEHRDGSPTDRSWGSRGGQDPGGGQSGGG
QPKAGMPAMERLPPERPQVLA SPPVQNGGLRDSSTLPRALEGNPRASAEPTLRAGGRGSPGLPTQEA
NGEPSKPDTS DHQVSLPQAGASM

TRTRPLEQKLISEEDLAANDILDYKDDDDKV

Chromatograms: https://cdn.origene.com/chromatograms/mk6525_f03.zip

Restriction Sites: SgfI-MluI

Cloning Scheme:

Cloning sites used for ORF Shuttling:



* The last codon before the Stop codon of the ORF

ACCN: NM_001130029

ORF Size: 909 bp

OTI Disclaimer: The molecular sequence of this clone aligns with the gene accession number as a point of reference only. However, individual transcript sequences of the same gene can differ through naturally occurring variations (e.g. polymorphisms), each with its own valid existence. This clone is substantially in agreement with the reference, but a complete review of all prevailing variants is recommended prior to use. [More info](#)

OTI Annotation: This clone was engineered to express the complete ORF with an expression tag. Expression varies depending on the nature of the gene.

Components: The ORF clone is ion-exchange column purified and shipped in a 2D barcoded Matrix tube containing 10ug of transfection-ready, dried plasmid DNA (reconstitute with 100 ul of water).

Reconstitution Method:

1. Centrifuge at 5,000xg for 5min.
2. Carefully open the tube and add 100ul of sterile water to dissolve the DNA.
3. Close the tube and incubate for 10 minutes at room temperature.
4. Briefly vortex the tube and then do a quick spin (less than 5000xg) to concentrate the liquid at the bottom.
5. Store the suspended plasmid at -20°C. The DNA is stable for at least one year from date of shipping when stored at -20°C.

RefSeq: [NM_001130029.1](#), [NP_001123501.1](#)

RefSeq Size: 2171 bp

RefSeq ORF: 912 bp

Locus ID: 285613

UniProt ID: [Q8NC24](#)

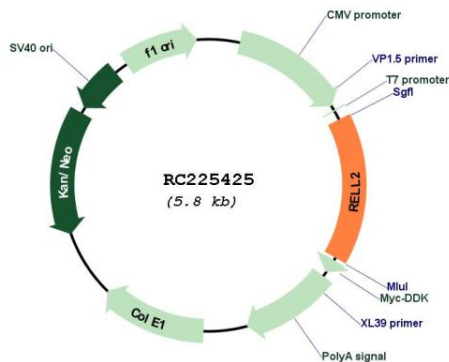
Cytogenetics: 5q31.3

Protein Families: Transmembrane

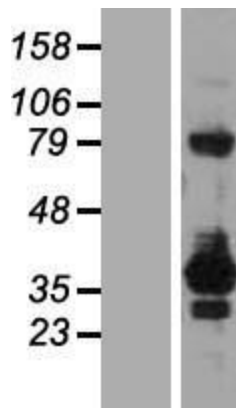
MW: 32.5 kDa

Gene Summary: Induces activation of MAPK14/p38 cascade, when overexpressed (PubMed:28688764). Induces apoptosis, when overexpressed (PubMed:19969290).[UniProtKB/Swiss-Prot Function]

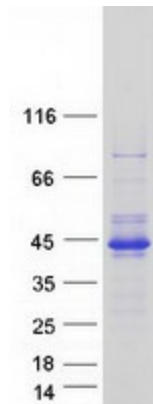
Product images:



Circular map for RC225425



Western blot validation of overexpression lysate (Cat# [LY427113]) using anti-DDK antibody (Cat# [TA50011-100]). Left: Cell lysates from untransfected HEK293T cells; Right: Cell lysates from HEK293T cells transfected with RC225425 using transfection reagent MegaTran 2.0 (Cat# [TT210002]).



Coomassie blue staining of purified RELL2 protein (Cat# [TP325425]). The protein was produced from HEK293T cells transfected with RELL2 cDNA clone (Cat# RC225425) using MegaTran 2.0 (Cat# [TT210002]).