

LOC285498 (RNF212) (NM_001131034) Human Tagged Lenti ORF Clone

Product Type: Expression Plasmids

Tag: mGFP

Symbol: LOC285498

Synonyms: ZHP3

Mammalian Cell	None
----------------	------

Selection:

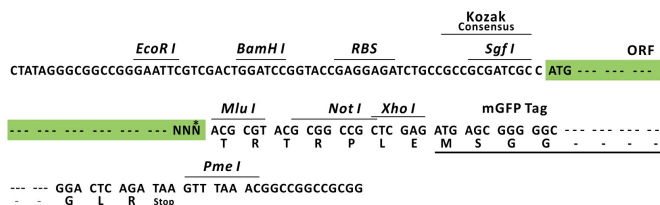
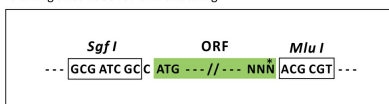
Vector: pLenti-C-mGFP (PS100071)

E. coli Selection: Chloramphenicol (34 ug/mL)

ORF Nucleotide Sequence: The ORF insert of this clone is exactly the same as(RC225411).

Restriction Sites: SgfI-MluI

Cloning Scheme:



* The last codon before the Stop codon of the ORF.

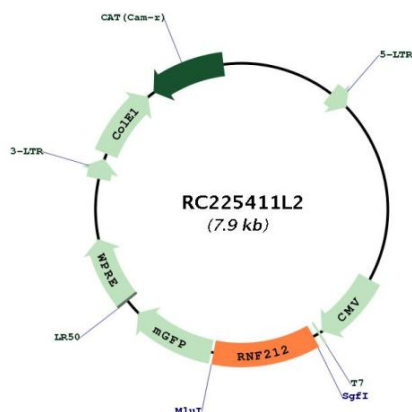
ACCN: NM_001131034

ORF Size: 891 bp

[View online »](#)

OTI Disclaimer:	The molecular sequence of this clone aligns with the gene accession number as a point of reference only. However, individual transcript sequences of the same gene can differ through naturally occurring variations (e.g. polymorphisms), each with its own valid existence. This clone is substantially in agreement with the reference, but a complete review of all prevailing variants is recommended prior to use. More info
OTI Annotation:	This clone was engineered to express the complete ORF with an expression tag. Expression varies depending on the nature of the gene.
Components:	The ORF clone is ion-exchange column purified and shipped in a 2D barcoded Matrix tube containing 10ug of transfection-ready, dried plasmid DNA (reconstitute with 100 ul of water).
Reconstitution Method:	<ol style="list-style-type: none"> 1. Centrifuge at 5,000xg for 5min. 2. Carefully open the tube and add 100ul of sterile water to dissolve the DNA. 3. Close the tube and incubate for 10 minutes at room temperature. 4. Briefly vortex the tube and then do a quick spin (less than 5000xg) to concentrate the liquid at the bottom. 5. Store the suspended plasmid at -20°C. The DNA is stable for at least one year from date of shipping when stored at -20°C.
Note:	Plasmids are not sterile. For experiments where strict sterility is required, filtration with 0.22um filter is required.
RefSeq:	NM_001131034.1
RefSeq ORF:	894 bp
Locus ID:	285498
UniProt ID:	Q495C1
Cytogenetics:	4p16.3
MW:	33.2 kDa
Gene Summary:	This gene encodes a RING finger protein that may function as a ubiquitin ligase. The encoded protein may be involved in meiotic recombination. This gene is located within a linkage disequilibrium block and polymorphisms in this gene may influence recombination rates. Alternate splicing results in multiple transcript variants.[provided by RefSeq, Oct 2010]

Product images:



Circular map for RC225411L2