

Product datasheet for **RC225410**

PSG8 (NM_001130168) Human Tagged ORF Clone

Product data:

Product Type: Expression Plasmids
Product Name: PSG8 (NM_001130168) Human Tagged ORF Clone
Tag: Myc-DDK
Symbol: PSG8
Synonyms: PSG1
Mammalian Cell Selection: Neomycin
Vector: pCMV6-Entry (PS100001)
E. coli Selection: Kanamycin (25 ug/mL)
ORF Nucleotide Sequence: >RC225410 representing NM_001130168
Red=Cloning site Blue=ORF Green=Tags(s)

TTTTGTAATACGACTCACTATAGGGCGGCCGGAATTCGTCGACTGGATCCGGTACCGAGGAGATCTGCC
GCC**CGATCGCC**

ATGGGGCTCCTCTCAGCCCCTCCCTGCACACAGCGCATCACCTGGAAGGGGCTCCTGCTCACAGTGGAGA
CTCCCAAGCCCTCCATCTCCAGCAGCAAATTAACCCAGGGAGGCCATGGAGGCTGTGAGCTTAACCTG
TGATCCTGAGACTCCGGACGCAAGCTACCTGTGGTGGATGAATGGTCAGAGCCTCCCTATGTCTCACAGG
TTGCAGTTGTCTGAAACCAACAGGACCCTTTTCTATTGGGTGTCACAAAGTACACTGCAGGACCCTATG
AATGTGAAATACGGAACCCAGTGAGTGCCAGCCGAGTGACCCATTCACCCTGAATCTCCTCCCGAAGCT
GCCCAAGCCCTACATCACCATCAACAACCTAAAACCCAGGGAGAATAAGGATGTCTTAAACTTCACCTGT
GAACCTAAGAGTGAGAACTACACCTACATTTGGTGGCTAAATGGTCAGAGCCTCCCGGTCAGTCCCAGGG
TAAAGCGACCCATTGAAAACAGGATCCTCATTCTACCCAGTGTCACGAGAAATGAAAACAGGACCCTATCA
ATGTGAAATAAGGGACCAATATGGTGGCATCCGCAGTTACCCAGTCACCCTGAATGTCTCTATGGTCCA
GACCTCCCAGAAATTTACCCTTCATTACCTATTACCGTTACAGGAGAAGTCTCTACTTGTCTGTCTGTG
CGGACTTAACCCACCGGCACAGTATTCTTGGACAATTAATGGGAAGTTTCAGCTATCAGGACAAAAGCT
CTTTATCCCCAAATTAATAAAGCATAGCGGGCTCTATGCTTGCTCTGTTCTGTAACCTCAGCCACTGGC
AAGGAAAGCTCCAAATCCATGACAGTAAAAGTCTCTGACTGGACATTACCC

**ACGCGTACGCGGGCCGCTCGAGCAGAAAACCTCATCTCAGAAGAGGATCTGGCAGCAAATGATATCCTGGATT
ACAAGGATGACGACGATAAGGTTTAA**



[View online »](#)

Protein Sequence: >RC225410 representing NM_001130168
 Red=Cloning site Green=Tags(s)

MGLLSAPPCTQRITWKGLLLTVETPKPSISSSKLNPREAMEAVSLTCDPETPDASYLWWMNGQSLPMSHR
 LQLSETNRTLFLLLGVTKYTAGPYECEIRNPVSASRSDPF TLNLLPKLPKYITINLKPENKDVLFNFTC
 EPKSENYTYIWWLNGQSLPVS PRVKRPIENRILILPSVTRNETGPYQCEIRDQYGGIRSYPVTLNVLVYGP
 DLPRIYPSFTYYRSGEVLVYLSCSADSNPPAQYSWTINGKFQLSGQKLFIPQITTKHSGLYACSVRNSATG
 KESSKSMTVKVS DWTL P

TRTRPLEQKLISEEDLAANDILDYKDDDDKV

Chromatograms: https://cdn.origene.com/chromatograms/mk8050_d04.zip

Restriction Sites: SgfI-MluI

Cloning Scheme:

Cloning sites used for ORF Shuttling:



* The last codon before the Stop codon of the ORF

ACCN: NM_001130168

ORF Size: 891 bp

OTI Disclaimer: The molecular sequence of this clone aligns with the gene accession number as a point of reference only. However, individual transcript sequences of the same gene can differ through naturally occurring variations (e.g. polymorphisms), each with its own valid existence. This clone is substantially in agreement with the reference, but a complete review of all prevailing variants is recommended prior to use. [More info](#)

OTI Annotation: This clone was engineered to express the complete ORF with an expression tag. Expression varies depending on the nature of the gene.

Components: The ORF clone is ion-exchange column purified and shipped in a 2D barcoded Matrix tube containing 10ug of transfection-ready, dried plasmid DNA (reconstitute with 100 ul of water).

Reconstitution Method:

1. Centrifuge at 5,000xg for 5min.
2. Carefully open the tube and add 100ul of sterile water to dissolve the DNA.
3. Close the tube and incubate for 10 minutes at room temperature.
4. Briefly vortex the tube and then do a quick spin (less than 5000xg) to concentrate the liquid at the bottom.
5. Store the suspended plasmid at -20°C. The DNA is stable for at least one year from date of shipping when stored at -20°C.

RefSeq: [NM_001130168.2](#)

RefSeq ORF: 894 bp

Locus ID: 440533

UniProt ID: [Q9UQ74](#)

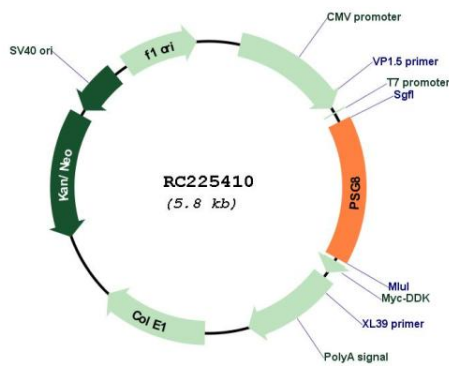
Cytogenetics: 19q13.2

Protein Families: Secreted Protein

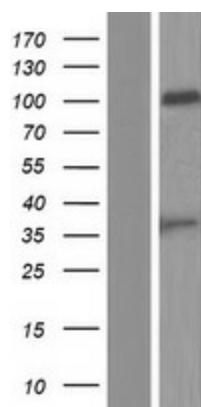
MW: 33.3 kDa

Gene Summary: The human pregnancy-specific glycoproteins (PSGs) are a group of molecules that are mainly produced by the placental syncytiotrophoblasts during pregnancy. PSGs comprise a subgroup of the carcinoembryonic antigen (CEA) family, which belongs to the immunoglobulin superfamily. For additional general information about the PSG gene family, see PSG1 (MIM 176390).[supplied by OMIM, Oct 2009]

Product images:



Circular map for RC225410



Western blot validation of overexpression lysate (Cat# [LY427193]) using anti-DDK antibody (Cat# [TA50011-100]). Left: Cell lysates from untransfected HEK293T cells; Right: Cell lysates from HEK293T cells transfected with RC225410 using transfection reagent MegaTran 2.0 (Cat# [TT210002]).