

Product datasheet for RC225395

SYNPR (NM_001130003) Human Tagged ORF Clone

Product data:

Product Type:	Expression Plasmids
Product Name:	SYNPR (NM_001130003) Human Tagged ORF Clone
Tag:	Myc-DDK
Symbol:	SYNPR
Synonyms:	SPO
Mammalian Cell Selection:	Neomycin
Vector:	pCMV6-Entry (PS100001)
E. coli Selection:	Kanamycin (25 ug/mL)
ORF Nucleotide Sequence:	>RC225395 representing NM_001130003 Red=Cloning site Blue=ORF Green=Tags(s)

TTTTGTAATACGACTCACTATAGGGCGGCCGGAATTCGTCGACTGGATCCGGTACCGAGGAGATCTGCC
GCC**CGGATCGCC**

ATGGACCCTGTGAGTCAGCTGGCCTCTGCGGGCACCTCCGGGTGCTGAAGGAGCCCTTGCCTTCTGC
GAGCCCTGGAATTGCTTTTTGCAATCTTTGCATTTGCAACATGCGGTGGCTATTCTGGAGGCTGCGGT
GAGTGTGGACTGCGTCAACAAGACAGAAAGTAACCTCAGCATCGACATAGCGTTTGCCTACCCATTGAG
TTGCACCAGGTGACGTTTGGAGTGCCACCTGCGAGGAAAGGAACGGCAGAAGCTGGCATTGATTGGTG
ACTCCTCGTCTTACGAGAGTTCTTCGTCAGTGTGCTGTCTTCGCTTCTCTACTCTTTGGCTGCCAC
TGTGTTTTACATTTTCTCCAGAACAAATACCGGAAAACAACCGGGGCCACTCATTGACTTCATTGTC
ACTGTAGTCTTTTCGTTCTTGTGGTTGGTGGGTTTCATCAGCTTGGGCAAAAGGACTGTCTGACGTCAAAG
TTGCAACGGATCCCAAGGAAGTATTGCTACTAATGTCAGCTTGCAACAGCCATCCAACAAATGCATGGC
TATCCACAGCCCTGTTATGTCAAGCTTAAACACTTCTGTGGTCTTTGGATTCTTGAACCTTATTCTCTGG
GCTGGAACATATGTTTTGTTTTCAAGGAGACCGGCTGGCATTCTTCGGGACAGAGATATCTTTCAGATC
CAATGGAGAAGCACTCCAGCAGCTATAATCAAGGTGGTTACAACCAAGACAGCTATGGATCAAGCAGTGG
GTACAGTCAGCAGGCGAGTTTGGGGCAACCTCAGATGAGTTTGGCCAACAGCCTACTGGCCCCACTTCC
TTTACCAATCAGATT

ACGCGTACGCGGCCGCTCGAGCAGAAACTCATCTCAGAAGAGGATCTGGCAGCAAATGATATCCTGGATT
ACAAGGATGACGACGATAAGGTTTAA



[View online »](#)

Protein Sequence: >RC225395 representing NM_001130003
Red=Cloning site Green=Tags(s)

MDPVSQLASAGTFRVLKEPLAFLRALELLFAIFAFATCGGYSGGLRLSVDCVNKTESNLSIDIAFAYPFR
 LHQVTFEVPTCEGKERQKLALIGDSSSSAEFFVTAVFAFLYSLAATVVYIFFQNKYRENNRGLIDFIV
 TVVFSFLWLVGSSAWAKGLSDVKVATDPKEVLLLSACKQPSNCKMAIHSFVMSLNTSVVFGFLNFIW
 AGNIWFVKETGWHSSGQRYLSDPMEKHSSSYNQGGYNQDSYGSSSGYSQQASLGPTSDIEFGQPTGPTS
 FTNQI

TRTRPLEQKLISEEDLAANDILDYKDDDDKV

Chromatograms: https://cdn.origene.com/chromatograms/mk8049_d06.zip

Restriction Sites: SgfI-MluI

Cloning Scheme:



ACCN: NM_001130003

ORF Size: 855 bp

OTI Disclaimer: The molecular sequence of this clone aligns with the gene accession number as a point of reference only. However, individual transcript sequences of the same gene can differ through naturally occurring variations (e.g. polymorphisms), each with its own valid existence. This clone is substantially in agreement with the reference, but a complete review of all prevailing variants is recommended prior to use. [More info](#)

OTI Annotation: This clone was engineered to express the complete ORF with an expression tag. Expression varies depending on the nature of the gene.

Components: The ORF clone is ion-exchange column purified and shipped in a 2D barcoded Matrix tube containing 10ug of transfection-ready, dried plasmid DNA (reconstitute with 100 ul of water).

Reconstitution Method:

1. Centrifuge at 5,000xg for 5min.
2. Carefully open the tube and add 100ul of sterile water to dissolve the DNA.
3. Close the tube and incubate for 10 minutes at room temperature.
4. Briefly vortex the tube and then do a quick spin (less than 5000xg) to concentrate the liquid at the bottom.
5. Store the suspended plasmid at -20°C. The DNA is stable for at least one year from date of shipping when stored at -20°C.

RefSeq: [NM_001130003.2](#)

RefSeq ORF: 858 bp

Locus ID: 132204

UniProt ID: [Q8TBG9](#)

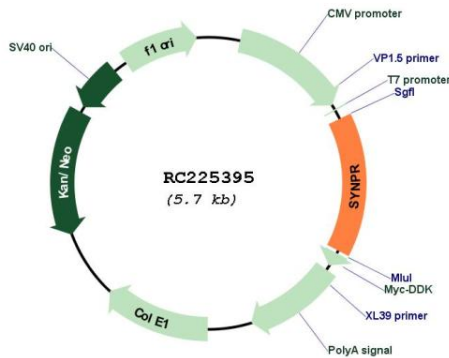
Cytogenetics: 3p14.2

Protein Families: Secreted Protein, Transmembrane

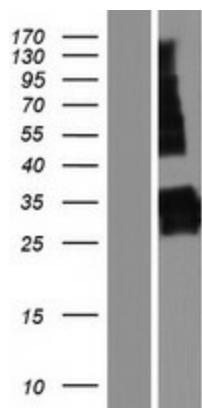
MW: 31.1 kDa

Gene Summary: Intrinsic membrane protein of small synaptic vesicles. Probable vesicular channel protein (By similarity).[UniProtKB/Swiss-Prot Function]

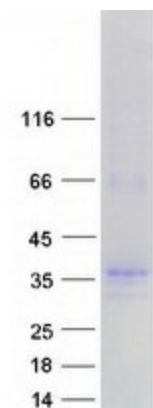
Product images:



Circular map for RC225395



Western blot validation of overexpression lysate (Cat# [LY427094]) using anti-DDK antibody (Cat# [TA50011-100]). Left: Cell lysates from untransfected HEK293T cells; Right: Cell lysates from HEK293T cells transfected with RC225395 using transfection reagent MegaTran 2.0 (Cat# [TT210002]).



Coomassie blue staining of purified SYNPR protein (Cat# [TP325395]). The protein was produced from HEK293T cells transfected with SYNPR cDNA clone (Cat# RC225395) using MegaTran 2.0 (Cat# [TT210002]).