

Product datasheet for **RC225391**

KCTD15 (NM_001129994) Human Tagged ORF Clone

Product data:

Product Type:	Expression Plasmids
Product Name:	KCTD15 (NM_001129994) Human Tagged ORF Clone
Tag:	Myc-DDK
Symbol:	KCTD15
Mammalian Cell Selection:	Neomycin
Vector:	pCMV6-Entry (PS100001)
E. coli Selection:	Kanamycin (25 ug/mL)
ORF Nucleotide Sequence:	>RC225391 representing NM_001129994 Red=Cloning site Blue=ORF Green=Tags(s)

TTTTGTAATACGACTCACTATAGGGCGGCCGGGAATTCGTCGACTGGATCCGGTACCGAGGAGATCTGCC
GCC**CGATCGCC**

ATGCCTCACCGCAAGGAGCGGCCGAGCGGGTCTCGCTTCACACACACGGCAGCACCGGCACCGCGGAGG
GAGGAAACATGTCCCGGCTGTCTCTACCCGGTCGCCTGTGTCTCCCTGGCTGCCAGGGCATCCCCCT
GCCAGCCAGCTACCAAGTCCAATGCACCTGTGCACATCGATGTGGGCGGCCACATGTACACCAGCAGC
CTGGCCACGCTCACCAAGTACCCTGACTCCAGGATAAGCCGCCTTTCAATGGCACTGAACCCATCGTCC
TGGACAGTTTGAAGCAACATTATTTATTGACCGGGATGGGAGATTTTCCGCTACGTCCTGAGCTTCCT
GCGGACGTCCAAGCTGCTGCTTCCGGATGACTTTAAGGACTTCAGTCTGCTGTACGAGGAGCGCGCTAC
TATCAGCTCCAGCCATGGTGCGCGAGCTGGAGCGCTGGCAGCAGGAGCAGGAGCAGCGGCGCCGAGCC
GGGCTGTGACTGCCTGGTGGTGCAGCTCACGCCGACTTGGGCGAGCGGATCGCACTCAGCGGCGAGAA
GGCCCTCATCGAGGAGGTCTTCCCGAGACCGGAGACGTATGTGCAACTCCGTCAACGCCGGCTGGAAC
CAGGACCCACGCAGTCATCCGCTTCCCGCTCAATGGCTACTGCCGGCTCAACTCGGTACAGGTCTGG
AGCGGCTGTTCCAGAGGGTTTCAGCGTGGCTGCGTCTGTGGGGCGGTGTGGACTCCTCCAGTTCAG
CGAGTATGTGCTTTCGGGGAGGAGCGGCGGCCAGCCACCCCACTGCTGTTCAATCAAGCAGGAA
CCCTGGAC

ACGCGTACGCGGCCGCTCGAGCAGAACTCATCTCAGAAGAGGATCTGGCAGCAAATGATATCCTGGATT
ACAAGGATGACGACGATAAGGTTTAA



[View online »](#)

Protein Sequence: >RC225391 representing NM_001129994
Red=Cloning site Green=Tags(s)

MPHRKERPSSSLHTHGSTGTAEGGNMSRLSLTRSPVSPLAAQGIPLPAQLTKSNAPVHIDVGGHMYTSS
 LATLTKYPDSRISRLFNGTEPIVLDLQHYFIDRDGEIFRYVLSFLRTSKLLLPDFKDFSLLYEEARY
 YQLQPMVRELERWQQEQEQRRRSRACDCLVVRVTPDLGERIALSGEKALIEEVFPETGDVMCNSVNAGWN
 QDPTHVIRFPLNGYCRLLNSVQVLERLFQRGF SVAASC GGGV DSSQF SEYVLCREERRPQPTPTAVRIKQE
 PLD

TRTRPLEQKLISEEDLAANDILDYKDDDDKV

Chromatograms: https://cdn.origene.com/chromatograms/mk8049_c07.zip

Restriction Sites: SgfI-MluI

Cloning Scheme:

Cloning sites used for ORF Shuttling:



ACCN: NM_001129994

ORF Size: 849 bp

OTI Disclaimer: The molecular sequence of this clone aligns with the gene accession number as a point of reference only. However, individual transcript sequences of the same gene can differ through naturally occurring variations (e.g. polymorphisms), each with its own valid existence. This clone is substantially in agreement with the reference, but a complete review of all prevailing variants is recommended prior to use. [More info](#)

OTI Annotation: This clone was engineered to express the complete ORF with an expression tag. Expression varies depending on the nature of the gene.

Components: The ORF clone is ion-exchange column purified and shipped in a 2D barcoded Matrix tube containing 10ug of transfection-ready, dried plasmid DNA (reconstitute with 100 ul of water).

Reconstitution Method:

1. Centrifuge at 5,000xg for 5min.
2. Carefully open the tube and add 100ul of sterile water to dissolve the DNA.
3. Close the tube and incubate for 10 minutes at room temperature.
4. Briefly vortex the tube and then do a quick spin (less than 5000xg) to concentrate the liquid at the bottom.
5. Store the suspended plasmid at -20°C. The DNA is stable for at least one year from date of shipping when stored at -20°C.

RefSeq: [NM_001129994.2](#)

RefSeq ORF: 852 bp

Locus ID: 79047

UniProt ID: [Q96S11](#)

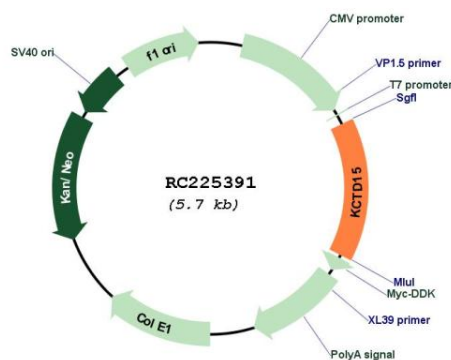
Cytogenetics: 19q13.11

Protein Families: Ion Channels: Other

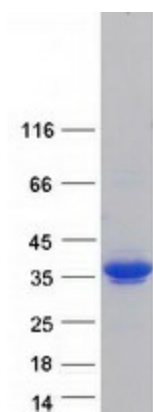
MW: 31.8 kDa

Gene Summary: During embryonic development, interferes with neural crest formation (By similarity). Inhibits AP2 transcriptional activity by interaction with its activation domain.[UniProtKB/Swiss-Prot Function]

Product images:



Circular map for RC225391



Coomassie blue staining of purified KCTD15 protein (Cat# [TP325391]). The protein was produced from HEK293T cells transfected with KCTD15 cDNA clone (Cat# RC225391) using MegaTran 2.0 (Cat# [TT210002]).