

Product datasheet for **RC225390**

ASPDH (NM_001114598) Human Tagged ORF Clone

Product data:

Product Type:	Expression Plasmids
Product Name:	ASPDH (NM_001114598) Human Tagged ORF Clone
Tag:	Myc-DDK
Symbol:	ASPDH
Mammalian Cell Selection:	Neomycin
Vector:	pCMV6-Entry (PS100001)
E. coli Selection:	Kanamycin (25 ug/mL)
ORF Nucleotide Sequence:	>RC225390 representing NM_001114598 Red=Cloning site Blue=ORF Green=Tags(s)

TTTTGTAATACGACTCACTATAGGGCGGCCGGAATTCGTCGACTGGATCCGGTACCGAGGAGATCTGCC
GCC**CGATCGCC**

ATGGCCGACAGGGGCCCGTGGAGGGTGGGCGTGGTGGGCTATGGCCGCCTCGGACAGTCCCTCGTCTCCC
GCCTCTTGGCTCAGGGACCAGAACTTGGCCTAGAACTTGTTCGTCGGAATCGTGACCCAGGACGAAT
GGCAGGGAGCGTGCCCCCTTCCCTGCAGCTCCAGAACCTTGTGCCCTTGGGAAAGGCGCCCTGATCTG
GTTGTGGAAGTGCCCATCCAAAATAATCCATGAATCTGGGGCACAAATCCTGCGCCATGCCAATCTCC
TGGTGGGTCCCCCTCAGCTCTAAGTGACCAGACCAGAGCGGCAGCTTTGGAGGCCTCACAGCACTG
GGACCACGCCGTGTTGTGGCCCGAGGGGCCCTGTGGGGCGCTGAGGACATCAGGAGATTGGATGCAGCT
GGGGCCCTCCGGAGCCTTCGTGTCAACATGGCCACACACCCCGATGGCTTCCGGCTTGAGGGACCCCTGG
CTGCAGCCACAGCCCTGGGCTTGCAGTGTGCTCTACGAAGGCCCTGTCCGTGGGCTCTGCCCTTTGC
CCCGCGAAATCCAACACCATGGCGGGCTGCCCTGGCTGCCCCAGCCTGGGCTTCGATGGGGTGATT
GGGGTGTCTGGGCTGATACCAGCCTCACGGACATGCACGTGGTGGATGTAGAGCTGAGCGGACCCCGG
GCCCCACGGGCCGAAGCTTTGCTGTGCACACCCGAGAGAGAACCCTGCCGAGCCAGGCGCGGTACCCGG
CTCCGCCACCGTCACGGCCTTCTGGCAGAGCCTCTGGCCTGCTGCCAGCTCCCTCCAGGCCGGGGATC
CATCTCTGC

ACGCGTACGCGGCCGCTCGAGCAGAACTCATCTCAGAAGAGGATCTGGCAGCAAATGATATCCTGGATT
ACAAGGATGACGACGATAAGGTTTAA



[View online »](#)

Protein Sequence: >RC225390 representing NM_001114598
Red=Cloning site Green=Tags(s)

MADRGPWVRVGVYGRLLGQSLVSRLLAQGPGLLELVFVWNRDPGRMAGSVPPSLQLQNLAAALGERRPDL
 VVEVAHPKIIHESGAQILRHANLLVGSPSALSDQTTERQLLEASQHWDAVAVARGALWGAEDIRRLDAA
 GGLRSLRVTMATHPDGFRLEGPLAAAHSPGPCTVLYEGPVVRLCPFAPRNSNTMAAAAALAPSLGFDGVI
 GVLVADTSLTDMHVVDVELSGPRGPTGRSFAVHTRRENPAEPGAVTGSATVTAFWQSLACCCQLPSRPGI
 HLC

TRTRPLEQKLISEEDLAANDILDYKDDDDKV

Chromatograms: https://cdn.origene.com/chromatograms/mk8049_c06.zip

Restriction Sites: SgfI-MluI

Cloning Scheme:

Cloning sites used for ORF Shuttling:



* The last codon before the Stop codon of the ORF

ACCN: NM_001114598

ORF Size: 849 bp

OTI Disclaimer: The molecular sequence of this clone aligns with the gene accession number as a point of reference only. However, individual transcript sequences of the same gene can differ through naturally occurring variations (e.g. polymorphisms), each with its own valid existence. This clone is substantially in agreement with the reference, but a complete review of all prevailing variants is recommended prior to use. [More info](#)

OTI Annotation: This clone was engineered to express the complete ORF with an expression tag. Expression varies depending on the nature of the gene.

Components: The ORF clone is ion-exchange column purified and shipped in a 2D barcoded Matrix tube containing 10ug of transfection-ready, dried plasmid DNA (reconstitute with 100 ul of water).

Reconstitution Method:

1. Centrifuge at 5,000xg for 5min.
2. Carefully open the tube and add 100ul of sterile water to dissolve the DNA.
3. Close the tube and incubate for 10 minutes at room temperature.
4. Briefly vortex the tube and then do a quick spin (less than 5000xg) to concentrate the liquid at the bottom.
5. Store the suspended plasmid at -20°C. The DNA is stable for at least one year from date of shipping when stored at -20°C.

Note: Plasmids are not sterile. For experiments where strict sterility is required, filtration with 0.22um filter is required.

RefSeq: [NM_001114598.2](#)

RefSeq ORF: 852 bp

Locus ID: 554235

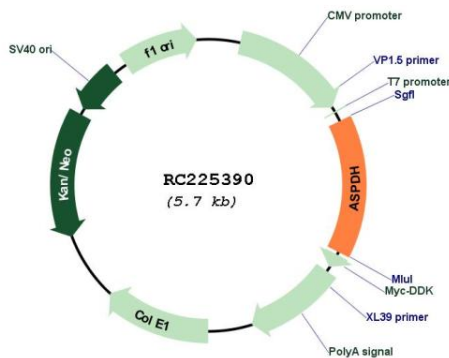
UniProt ID: [A6ND91](#)

Cytogenetics: 19q13.33

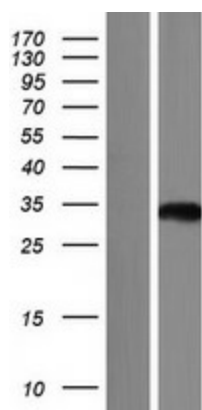
MW: 29.8 kDa

Gene Summary: Specifically catalyzes the NAD or NADP-dependent dehydrogenation of L-aspartate to iminoaspartate.[UniProtKB/Swiss-Prot Function]

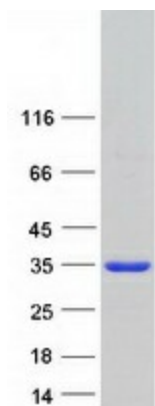
Product images:



Circular map for RC225390



Western blot validation of overexpression lysate (Cat# [LY426491]) using anti-DDK antibody (Cat# [TA50011-100]). Left: Cell lysates from untransfected HEK293T cells; Right: Cell lysates from HEK293T cells transfected with RC225390 using transfection reagent MegaTran 2.0 (Cat# [TT210002]).



Coomassie blue staining of purified ASPDH protein (Cat# [TP325390]). The protein was produced from HEK293T cells transfected with ASPDH cDNA clone (Cat# RC225390) using MegaTran 2.0 (Cat# [TT210002]).