

Product datasheet for **RC225389**

PPP6C (NM_001123369) Human Tagged ORF Clone

Product data:

Product Type:	Expression Plasmids
Product Name:	PPP6C (NM_001123369) Human Tagged ORF Clone
Tag:	Myc-DDK
Symbol:	PPP6C
Synonyms:	PP6; PP6C
Mammalian Cell Selection:	Neomycin
Vector:	pCMV6-Entry (PS100001)
E. coli Selection:	Kanamycin (25 ug/mL)
ORF Nucleotide Sequence:	>RC225389 representing NM_001123369 Red=Cloning site Blue=ORF Green=Tags(s)

TTTTGTAATACGACTCACTATAGGGCGGCCGGAATTCGTCGACTGGATCCGGTACCGAGGAGATCTGCC
GCC**CGATCGCC**

ATGGCGCCGCTAGACCTGGACAAGTATGTGAAATAGCGCGGCTGTGCAAGTACCTGCCAGAGAACGACC
TGAAGCGGCTATGTGACTACGTTTGTGACCTCCTTTAGAAGAGTCAAATGTTCCAGCCAGTATCAACACC
AGTAACAGTGTGTGGAGATATCCATGGACAGGGTATTTTGTAGACAGAGGTTACTATAGTTTGGAGACC
TTCACCTACCTTCTTGCATTAAGGCTAAATGGCCTGATCGATTACACTTTTGGAGGAAATCATGAGA
GTAGACAGATAACACAGGTCTATGGATTTATGATGAGTGCCAAACCAAATATGGAAATGCTAATGCCTG
GAGATACTGTACCAAAGTTTTTGCATGCTCACAGTAGCAGCTTTAATAGATGAGCAGATTTTGTGTGC
CATGGTGGTTTATCTCCTGATATCAAAACTGGATCAAATTCGAACCATCGAACGGAATCAGGAAATTC
CTCATAAAGGAGCATTTTGTGATCTGGTTTGGTCAGATCCTGAAGATGTGGATACCTGGGCTATCAGTCC
CCGAGGAGCAGGTTGGCTTTTGGAGCAAAGGTCACAAATGAGTTTGTTCATATCAACAACCTAAAACCTC
ATCTGCAGAGCACATCACTAGTGCACGAAGGCTATAAATTTATGTTTGTGAGAAGCTGGTGACAGTAT
GGTCTGCTCCTAATTACTGCTATCGTTGTGAAATATTGCTTCGATCATGGTCTTCAAAGATGTAATAC
AAGAGAACCAAAGTTATCCGGGCAGTTCAGATTCAGAACGTGTTATTCCTCCCAGAACGACAACGCCA
TATTTCTT

ACGCGTACGCGGCCGCTCGAGCAGAACTCATCTCAGAAGAGGATCTGGCAGCAAATGATATCCTGGATT
ACAAGGATGACGACGATAAGGTTTAA



[View online »](#)

Protein Sequence: >RC225389 representing NM_001123369
Red=Cloning site Green=Tags(s)

MAPLDDLDKYVEIARLCKYLPENDLKRLCDYVCDLLLEESNVQPVSTPVTVCGDIHGQGFVDRGYYSLET
 FTYLLALKAKWPDRITLLRGNHESRQITQVYGFYDECQTKYGNANAWRYCTKVFDMLTVAALIDEQILCV
 HGGLSPDIKTLDQIRTIERNQEIPHKGAFCDLVWSDPEDVDTWAI SPRGAGWLF GAKVTNEFVHINNLKL
 ICRAHQLVHEGYKFMFDEKLVTVWSAPNYCYRCGNIASIMVFKDVNTREP KLFRAVPDSERVIPRRTTTP
 YFL

TRTRPLEQKLISEEDLAANDILDYKDDDDKV

Chromatograms: https://cdn.origene.com/chromatograms/mk8049_c05.zip

Restriction Sites: SgfI-MluI

Cloning Scheme:



ACCN: NM_001123369

ORF Size: 849 bp

OTI Disclaimer: The molecular sequence of this clone aligns with the gene accession number as a point of reference only. However, individual transcript sequences of the same gene can differ through naturally occurring variations (e.g. polymorphisms), each with its own valid existence. This clone is substantially in agreement with the reference, but a complete review of all prevailing variants is recommended prior to use. [More info](#)

OTI Annotation: This clone was engineered to express the complete ORF with an expression tag. Expression varies depending on the nature of the gene.

Components: The ORF clone is ion-exchange column purified and shipped in a 2D barcoded Matrix tube containing 10ug of transfection-ready, dried plasmid DNA (reconstitute with 100 ul of water).

Reconstitution Method:

1. Centrifuge at 5,000xg for 5min.
2. Carefully open the tube and add 100ul of sterile water to dissolve the DNA.
3. Close the tube and incubate for 10 minutes at room temperature.
4. Briefly vortex the tube and then do a quick spin (less than 5000xg) to concentrate the liquid at the bottom.
5. Store the suspended plasmid at -20°C. The DNA is stable for at least one year from date of shipping when stored at -20°C.

RefSeq: [NM_001123369.1](#), [NP_001116841.1](#)

RefSeq ORF: 852 bp

Locus ID: 5537

UniProt ID: [O00743](#)

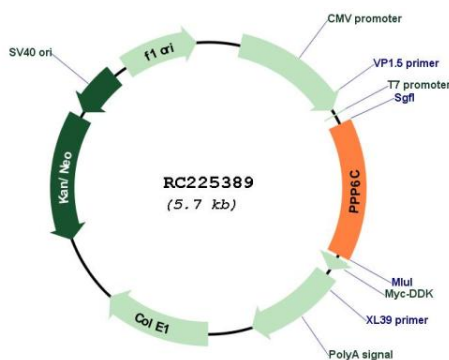
Cytogenetics: 9q33.3

Protein Families: Druggable Genome, Phosphatase

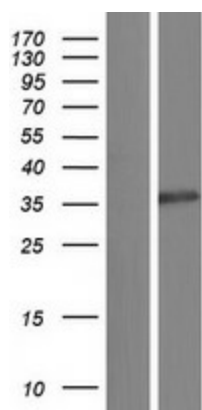
MW: 32.4 kDa

Gene Summary: This gene encodes the catalytic subunit of protein phosphatase, a component of a signaling pathway regulating cell cycle progression. Splice variants encoding different protein isoforms exist. The pseudogene of this gene is located on chromosome X. [provided by RefSeq, Jul 2008]

Product images:



Circular map for RC225389



Western blot validation of overexpression lysate (Cat# [LY426611]) using anti-DDK antibody (Cat# [TA50011-100]). Left: Cell lysates from untransfected HEK293T cells; Right: Cell lysates from HEK293T cells transfected with RC225389 using transfection reagent MegaTran 2.0 (Cat# [TT210002]).