

Product datasheet for RC225382

PPIL6 (NM_00111298) Human Tagged ORF Clone

Product data:

Product Type:	Expression Plasmids
Product Name:	PPIL6 (NM_00111298) Human Tagged ORF Clone
Tag:	Myc-DDK
Symbol:	PPIL6
Synonyms:	bA425D10.6; dj919F19.1; PPIase; RSPH12
Mammalian Cell Selection:	Neomycin
Vector:	pCMV6-Entry (PS100001)
E. coli Selection:	Kanamycin (25 ug/mL)
ORF Nucleotide Sequence:	>RC225382 representing NM_00111298 Red=Cloning site Blue=ORF Green=Tags(s)

TTTTGTAATACGACTCACTATAGGGCGGCCGGAATTCGTCGACTGGATCCGGTACCGAGGAGATCTGCC
GCC**CGATCGCC**

ATGGCAAGGCCGAGCCGTGCGGGCCCCCGCACGCTAGGTGCGGCTCGCCGTCGCTGCCGGAGCGGCCGC
TGCAGGTGAAGGTGGTGGGGCTTTCAGCTGCCCAACTTTCAGATTGCGAAGAGCGCCGCTGAGGAACT
CAAAAATGAAACCTGGGAATATTCTTCTCTGTGATTTCTTTGTTAATGGTCAGTTTCTGGGTGATGCA
TTGGATCTGCAGAAATGGGCCACGAGGTGTGGGATATAGTTGACATTAACCCTCTGCACTTTATGACG
CACTCACTGAGGATTTTTCCGCTAAGTTCTTAAGAGACACCAAGCATGATTCGTGTTTTTGGACATTTG
TATTGATCTTCTCCAATTGGAAGATTGATTTTTGAGCTATACTGTGATGTGTGCCAAAACATGTAAA
AATTTTTCAGGTCTTGTGCACAGGAAAAGCAGGGTTTTCTCAACGTGGCATAAGACTACATTACAAAATT
CCATTTTTCATCGAATAGTACAGAATGGCTGGATACAAGGAGGGGATATAGTGTATGAAAAGGAGATAA
TGGAGAGTCGATTTATGGTCCAACATTTGAAGATGAAAATTTTCAGTTCCTCATAATAAAGAGGAGTA
CTTGAATGGCCAACAAGGCCGTCACAGCAACGGGTACAATTTCTATACACTGCAAGCAACTCCTT
ATCTAGATAGAAAATTTGTGGCTTTTGGCAACTGATTGAAGGAACAGAAGTGCTTAAACAACACTAGAATT
AGTTCCAACACAGAATGAAAGACCAATACATATGTGTAGAATTACTGACAGTGGAGATCCTTATGCT

ACGCGTACGCGGCCGCTCGAGCAGAAACTCATCTCAGAAGAGGATCTGGCAGCAAATGATATCCTGGATT
ACAAGGATGACGACGATAAGGTTTAA



[View online »](#)

Protein Sequence: >RC225382 representing NM_001111298
Red=Cloning site Green=Tags(s)

MARPQPCGPPHARCSPSLPERPLQVKVVLGFSCPWFQIAKSAEELKNETWEYSSSVISFVNGQFLGDA
 LDLQKWAHEVWDIVDIKPSALYDALTEDFS AKFLRDTKHDFVFLDICIDSSPIGRLLIFELYCDVCPKTCK
 NFQVLC TGKAGFSQRGIRLHYKNSIFHRIVQNGWIQGGDIVYKGDNGESIYGPTFEDENF SVPHNKRGV
 LGMANKGRHSNGSQFYITLQATPYLDRKFVAFGQLIEGTEVLKQLELVPTQNERPIHMCRI TDSGDPYA

TRTRPLEQKLISEEDLAANDILDYKDDDDKV

Chromatograms: https://cdn.origene.com/chromatograms/mk8049_a08.zip

Restriction Sites: SgfI-MluI

Cloning Scheme:

Cloning sites used for ORF Shuttling:



* The last codon before the Stop codon of the ORF

ACCN: NM_001111298

ORF Size: 837 bp

OTI Disclaimer: The molecular sequence of this clone aligns with the gene accession number as a point of reference only. However, individual transcript sequences of the same gene can differ through naturally occurring variations (e.g. polymorphisms), each with its own valid existence. This clone is substantially in agreement with the reference, but a complete review of all prevailing variants is recommended prior to use. [More info](#)

OTI Annotation: This clone was engineered to express the complete ORF with an expression tag. Expression varies depending on the nature of the gene.

Components: The ORF clone is ion-exchange column purified and shipped in a 2D barcoded Matrix tube containing 10ug of transfection-ready, dried plasmid DNA (reconstitute with 100 ul of water).

Reconstitution Method:

1. Centrifuge at 5,000xg for 5min.
2. Carefully open the tube and add 100ul of sterile water to dissolve the DNA.
3. Close the tube and incubate for 10 minutes at room temperature.
4. Briefly vortex the tube and then do a quick spin (less than 5000xg) to concentrate the liquid at the bottom.
5. Store the suspended plasmid at -20°C. The DNA is stable for at least one year from date of shipping when stored at -20°C.

RefSeq: [NM_001111298.1](#), [NP_001104768.1](#)

RefSeq ORF: 1014 bp

Locus ID: 285755

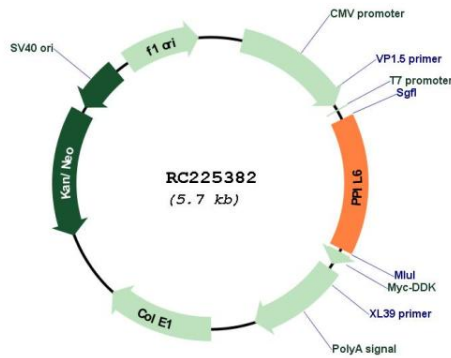
UniProt ID: [Q8IXY8](#)

Cytogenetics: 6q21

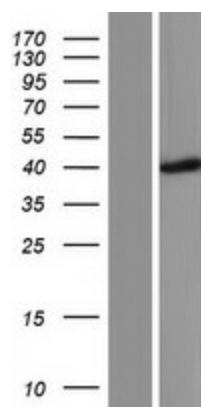
MW: 31.3 kDa

Gene Summary: Probable inactive PPIase with no peptidyl-prolyl cis-trans isomerase activity.[UniProtKB/Swiss-Prot Function]

Product images:



Circular map for RC225382



Western blot validation of overexpression lysate (Cat# [LY426361]) using anti-DDK antibody (Cat# [TA50011-100]). Left: Cell lysates from untransfected HEK293T cells; Right: Cell lysates from HEK293T cells transfected with RC225382 using transfection reagent MegaTran 2.0 (Cat# [TT210002]).