

Product datasheet for RC225381

APOLD1 (NM_001130415) Human Tagged ORF Clone

Product data:

Product Type:	Expression Plasmids
Product Name:	APOLD1 (NM_001130415) Human Tagged ORF Clone
Tag:	Myc-DDK
Symbol:	APOLD1
Synonyms:	VERGE
Mammalian Cell Selection:	Neomycin
Vector:	pCMV6-Entry (PS100001)
E. coli Selection:	Kanamycin (25 ug/mL)
ORF Nucleotide Sequence:	>RC225381 representing NM_001130415 Red=Cloning site Blue=ORF Green=Tags(s)

TTTTGTAATACGACTCACTATAGGGCGGCCGGAATTCGTCGACTGGATCCGGTACCGAGGAGATCTGCC
GCC**CGATCGCC**

ATGTTCCGCGCGCGTGTACCCGGCTGCGGGCCAGGGTACTCGGAAGGCGCGGGCAGGAGCCTGGCGAG
GATGCACCTTCCCCTGCCTTGGAAAGGGAATGGAGAGGCCGGCGCCGGGAGCCGCATGGGCCCGACGC
GCTGCGGCGCTTCCAGGGACTGCTGCTGGACCGCCGAGGCCGGCTGCACGGCCAGGTGCTGCGCCTGCGC
GAGGTGGCCCGCGCCTGGAGCGCTGCGCAGGCGCTCCCTCGTAGCCAACGTGGCCGGCAGCTCGCTGA
GCGCAACGGGCGCCCTCGCCGCATCGTGGGGCTCTCGCTCAGCCCGGTACCCTGGGGACCTCGCTGCT
GGTGTGCGCCGTGGGGTGGGGTGGCCACAGCCGGAGGGCCGTACCATCACGTCCGATCTCTCGCTG
ATCTTCTGCAACTCCCGGAGCTGCGGAGGGTGCAGGAGATCGCGGCCACCTGCCAGGACCAGATGCGAG
AGATCCTGAGCTGCCTCGAGTTTTTCTGCCGTGGCAGGGCTGCGGGGACCGCCAGCTGCTGCAGTGC GG
GAGGAACGCCCTCCATCGCCCTGTACAATTCTGTCTACTTCATCGTCTTCTTTGGCTCACGTGGCTTCCCTC
ATCCCCAGGCGGGCGGAGGGGGACCAAGGTTAGCCAGGCCGTGCTGAAGGCCAAGATTAGAACTGG
CCGAGAGCCTGGAGTCTGCACCGGGCTCTGGACGAACCTCAGCGAGCAGCTGGAGTCTCGGGTTCAGCT
CTGCACCAAGTCCAGTCTGGCCACGACCTCAAGATCTCTGCTGACCAGCGTGCAGGGCTGTTTTTC

ACGCGTACGCGGCCGCTCGAGCAGAACTCATCTCAGAAGAGGATCTGGCAGCAAATGATATCCTGGATT
ACAAGGATGACGACGATAAGGTTTAA



[View online »](#)

Protein Sequence: >RC225381 representing NM_001130415
Red=Cloning site Green=Tags(s)

MFRAPCHRLRARGTRKARAGAWRGCTFPCLGKGMERPAAREPHGPDALRRFQGLLLDRRGRLHGQVLRLE
 EVARRLERLRRRSLVANVAGSSLSATGALAAIVGLSLSPVTLGTSLLSAVGLGVATAGGAVTITSDLSL
 IFCNSRELRRVQIEAATCQDQMREILSCLEFFCRWQGCGRQLLQCGRNASIALYNSVYFIVFFGSRGFL
 IPRAEGDTKVSQAVLKAKIQKLAESLESCTGALDELSEQLSRVQLCTKSSRGHDLKISADQRAGLFF

TRTRPLEQKLISEEDLAANDILDYKDDDDKV

Chromatograms: https://cdn.origene.com/chromatograms/mk8006_c09.zip

Restriction Sites: SgfI-MluI

Cloning Scheme:

Cloning sites used for ORF Shuttling:



* The last codon before the Stop codon of the ORF

ACCN: NM_001130415

ORF Size: 837 bp

OTI Disclaimer: The molecular sequence of this clone aligns with the gene accession number as a point of reference only. However, individual transcript sequences of the same gene can differ through naturally occurring variations (e.g. polymorphisms), each with its own valid existence. This clone is substantially in agreement with the reference, but a complete review of all prevailing variants is recommended prior to use. [More info](#)

OTI Annotation: This clone was engineered to express the complete ORF with an expression tag. Expression varies depending on the nature of the gene.

Components: The ORF clone is ion-exchange column purified and shipped in a 2D barcoded Matrix tube containing 10ug of transfection-ready, dried plasmid DNA (reconstitute with 100 ul of water).

Reconstitution Method:

1. Centrifuge at 5,000xg for 5min.
2. Carefully open the tube and add 100ul of sterile water to dissolve the DNA.
3. Close the tube and incubate for 10 minutes at room temperature.
4. Briefly vortex the tube and then do a quick spin (less than 5000xg) to concentrate the liquid at the bottom.
5. Store the suspended plasmid at -20°C. The DNA is stable for at least one year from date of shipping when stored at -20°C.

RefSeq: [NM_001130415.2](#)

RefSeq ORF: 840 bp

Locus ID: 81575

UniProt ID: [Q96LR9](#)

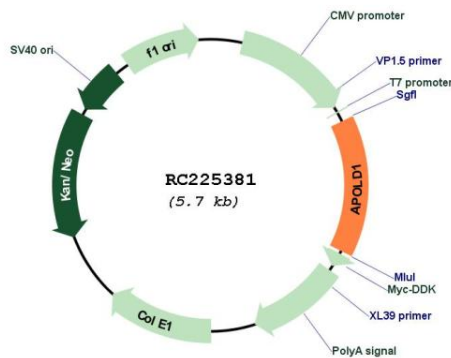
Cytogenetics: 12p13.1

Protein Families: Transmembrane

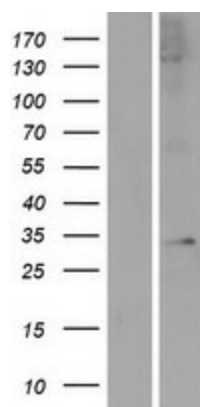
MW: 30.4 kDa

Gene Summary: APOLD1 is an endothelial cell early response protein that may play a role in regulation of endothelial cell signaling and vascular function (Regard et al., 2004 [PubMed 15102925]). [supplied by OMIM, Dec 2008]

Product images:



Circular map for RC225381



Western blot validation of overexpression lysate (Cat# [LY427205]) using anti-DDK antibody (Cat# [TA50011-100]). Left: Cell lysates from untransfected HEK293T cells; Right: Cell lysates from HEK293T cells transfected with RC225381 using transfection reagent MegaTran 2.0 (Cat# [TT210002]).