

## Product datasheet for RC225378

### CLEC12B (NM\_001129998) Human Tagged ORF Clone

#### Product data:

Product Type:	Expression Plasmids
Product Name:	CLEC12B (NM_001129998) Human Tagged ORF Clone
Tag:	Myc-DDK
Symbol:	CLEC12B
Synonyms:	UNQ5782
Mammalian Cell Selection:	Neomycin
Vector:	pCMV6-Entry (PS100001)
E. coli Selection:	Kanamycin (25 ug/mL)
ORF Nucleotide Sequence:	>RC225378 representing NM_001129998 Red=Cloning site Blue=ORF Green=Tags(s)

TTTTGTAATACGACTCACTATAGGGCGGCCGGAATTCGTCGACTGGATCCGGTACCGAGGAGATCTGCC  
GCC**CGATCGCC**

ATGTCTGAAGAAGTGACCTACGCGACTCACATTTAGGATTCTGCTGGAGCAAGGAATAACCGAGATG  
GAAATAACCTAAGAAAAAGAGGGCATCCAGCTCCATCTCCCATTGGCGTCATGCTGCTGGGTCTGGT  
AACTCTTGCCTGATGTTGCTGATTGGGCTGGTGACATTGGGGATGATGTTTTGCAGATATCTAATGAC  
ATTAAGTCAAGATTCAGAGAAATTGAGTCAACTTCAGAAAACCATCAACAGCAGCAGGATAAATTATCCC  
AGCAACTGGGCAACTCCAACAATTGTCCATGGAGGAGGAATTTCTCAAGTCACAGATCTCCAGTGTACT  
GAAGAGGCAGGAACAAATGGCCATCAAAGTGTGCAAGAGCTAATCATTACTTCCAGACCACAGATGT  
AATCCATGTCCTAAGATGTGGCAATGGTACCAAAATAGTTGCTACTATTTTACAACAAATGAGGAGAAAA  
CCTGGGCTAACAGTAGAAAGGACTGCATAGACAAGAACTCCACCCTAGTGAAGATAGACAGTTTGGGAAGA  
AAAGGATTTTCTTATGTCACAGCCATTACTCATGTTTTCGTTCTTTGGCTGGGATTATCATGGGACTCC  
TCTGGCAGAAGTTGGTTCTGGGAAGATGGCTCTGTTCCCTCTCCATCCTTATTTAGTACTAAAGAATTG  
ACCAGATCAATGGATCCAAGGATGTGCTTATTTTCAAAAAGGAAATATTTATTTCTCGCTGTAGTGC  
TGAATTTTTGGATTTGCGAGAAGACAGCTGCCCCAGTGAAGACTGAGGATTTGGAT

**ACGCGT**ACGCGGCCGCTCGAGCAGAACTCATCTCAGAAGAGGATCTGGCAGCAAATGATATCCTGGATT  
ACAAGGATGACGACGATAAGGTTTAA



[View online »](#)

**Protein Sequence:** >RC225378 representing NM\_001129998  
Red=Cloning site Green=Tags(s)

MSEEVTYATLTFQDSAGARNNRDGNLKRKHPAPSPIWRHAALGLVTLCLMLLIGLVTLGMMFLQISND  
 INSDSEKLSQLQKTIQQQDNLSQLGNSNNLSMEEFLKSQISSVLKRQEQAIAIKLCQELIHTSDHRC  
 NPCPKMWQWYQNSCYFFTNEEKTWANSRKDCIDKNSTLVKIDSLEEKDFLMSQPLLMFSFFWLGLSWDS  
 SGRSWFWEDGSVPSPLFSTKELDQINGSKGCAYFQKGNIIYISRCSAEIFWICEKTAAPVKTEDLD

TRTRPLEQKLISEEDLAANDILDYKDDDDKV

**Chromatograms:** [https://cdn.origene.com/chromatograms/mk8006\\_c05.zip](https://cdn.origene.com/chromatograms/mk8006_c05.zip)

**Restriction Sites:** SgfI-MluI

**Cloning Scheme:**

Cloning sites used for ORF Shuttling:



\* The last codon before the Stop codon of the ORF

**ACCN:** NM\_001129998

**ORF Size:** 828 bp

**OTI Disclaimer:** The molecular sequence of this clone aligns with the gene accession number as a point of reference only. However, individual transcript sequences of the same gene can differ through naturally occurring variations (e.g. polymorphisms), each with its own valid existence. This clone is substantially in agreement with the reference, but a complete review of all prevailing variants is recommended prior to use. [More info](#)

**OTI Annotation:** This clone was engineered to express the complete ORF with an expression tag. Expression varies depending on the nature of the gene.

**Components:** The ORF clone is ion-exchange column purified and shipped in a 2D barcoded Matrix tube containing 10ug of transfection-ready, dried plasmid DNA (reconstitute with 100 ul of water).

**Reconstitution Method:**

1. Centrifuge at 5,000xg for 5min.
2. Carefully open the tube and add 100ul of sterile water to dissolve the DNA.
3. Close the tube and incubate for 10 minutes at room temperature.
4. Briefly vortex the tube and then do a quick spin (less than 5000xg) to concentrate the liquid at the bottom.
5. Store the suspended plasmid at -20°C. The DNA is stable for at least one year from date of shipping when stored at -20°C.

**RefSeq:** [NM\\_001129998.2](#), [NP\\_001123470.1](#)

**RefSeq ORF:** 831 bp

**Locus ID:** 387837

**UniProt ID:** [Q2HXU8](#)

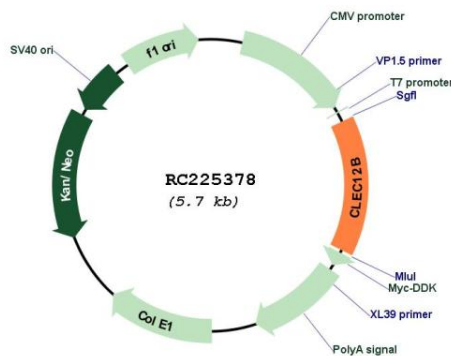
**Cytogenetics:** 12p13.2

**Protein Families:** Transmembrane

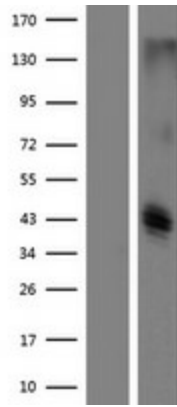
**MW:** 31.4 kDa

**Gene Summary:** Cell surface receptor that protects target cells against natural killer cell-mediated lysis. Modulates signaling cascades and mediates tyrosine phosphorylation of target MAP kinases. [UniProtKB/Swiss-Prot Function]

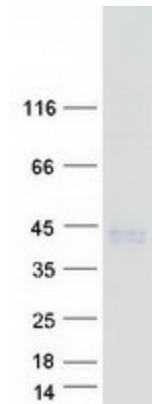
**Product images:**



Circular map for RC225378



Western blot validation of overexpression lysate (Cat# [LY427091]) using anti-DDK antibody (Cat# [TA50011-100]). Left: Cell lysates from untransfected HEK293T cells; Right: Cell lysates from HEK293T cells transfected with RC225378 using transfection reagent MegaTran 2.0 (Cat# [TT210002]).



Coomassie blue staining of purified CLEC12B protein (Cat# [TP325378]). The protein was produced from HEK293T cells transfected with CLEC12B cDNA clone (Cat# RC225378) using MegaTran 2.0 (Cat# [TT210002]).