

Product datasheet for **RC225374**

TMEM106B (NM_001134232) Human Tagged ORF Clone

Product data:

Product Type: Expression Plasmids
Product Name: TMEM106B (NM_001134232) Human Tagged ORF Clone
Tag: Myc-DDK
Symbol: TMEM106B
Synonyms: HLD16
Mammalian Cell Selection: Neomycin
Vector: pCMV6-Entry (PS100001)
E. coli Selection: Kanamycin (25 ug/mL)
ORF Nucleotide Sequence: >RC225374 ORF sequence
Red=Cloning site Blue=ORF Green=Tags(s)

TTTTGTAATACGACTCACTATAGGGCGCCGGGAATTCGTCGACTGGATCCGGTACCGAGGAGATCTGCC
GCC**CGATCGCC**

ATGGGAAAGTCTCTTTCTCATTTCCTTTGCATTCAAGCAAAGAAGATGCTTATGATGGAGTCACATCTG
AAAACATGAGGAATGGACTGGTTAATAGTGAAGTCCATAATGAAGATGGAAGAAATGGAGATGTCTCTCA
GTTTCCATATGTGAATTTACAGGAAGAGATAGTGTACCTGCCCTACTTGTGAGGAAACAGGAAGAATT
CCTAGGGGGCAAGAAAACCAACTGGTGGCATTGATCCATATAGTGATCAGAGATTAAGGCCAAGAAGAA
CAAAGCTGATGTGATGGCTTCTGTGTTTGTCTGTCTACTCCTTTCTGGATTGGCTGTGTTTTTCCTTTT
CCCTCGCTCTATCGACGTGAAATACATTGGTGTAAAATCAGCCTATGTCAGTTATGATGTTGAGGAGCGT
ACAATTTATTTAAATATCACAACACACTAAATATAACAAACAATAACTATTACTCTGTGCAAGTTGAAA
ACATCACTGCCCAAGTTCAATTTTCAAAAACAGTTATTGGAAAGGCACGCTTAAACAACATAACCATTAT
TGGTCCACTTGATATGAAACAAATTGATTACACAGTACCTACCCTTATAGCAGAGGAAATGAGTTATATG
TATGATTTCTGTACTCTGATATCCATCAAAGTGCATAACATAGTACTCATGATGCAAGTTACTGTGACAA
CAACATACTTTGGCCACTCTGAACAGATATCCCAGGAGAGGTATCAGTATGTGACTGTGGAAGAAACAC
AACTTATCAGTTGGGGCAGTCTGAATATTTAAATGTACTTCAGCCACAACAG

ACGCGTACGCGGCCGCTCGAGCAGAAACTCATCTCAGAAGAGGATCTGGCAGCAAATGATATCCTGGATT
ACAAGGATGACGACGATAAGGTTTAA



Protein Sequence: >RC225374 protein sequence
 Red=Cloning site Green=Tags(s)

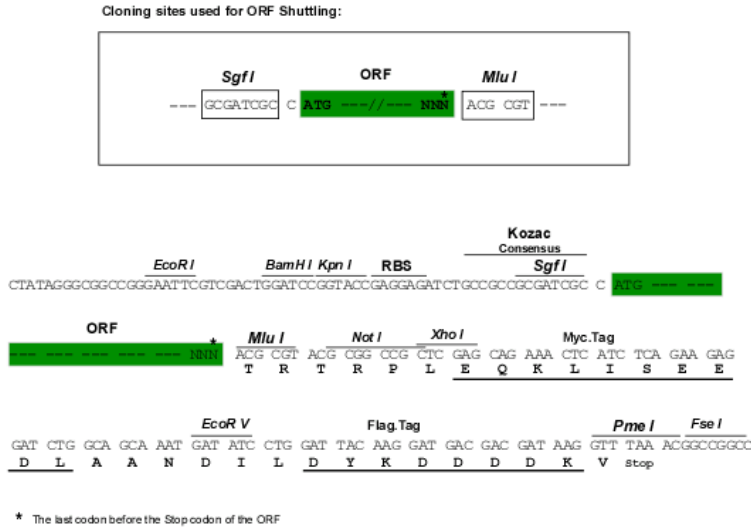
MGKSLSHLPLHSSKEDAYDGVTSENMRNGLVNSEVHNEDGRNGDVSQFPYVEFTGRDSVTCPTCQGTGRI
 PRQENQLVALIPYSDQRLRPRRTKLYVMASVFVCLLLSGLAVFFLFPRSIDVKYIGVKSAYVSYDVQKR
 TIYLNITNTLNI TNNNYYSVEVENITAQVQFSKTVIGKARLNNTIIGPLDMKQIDYTVPTVIAEEMSYM
 YDFCTLISIKVHNIVLMMQVTVTTTYFGHSEQISQERYQYVDCGRNTTYQLGQSEYLNVLQPQQ

TRTRPLEQKLISEEDLAANDILDYKDDDDKV

Chromatograms: https://cdn.origene.com/chromatograms/mk6319_f06.zip

Restriction Sites: SgfI-MluI

Cloning Scheme:



ACCN: NM_001134232

ORF Size: 822 bp

OTI Disclaimer: The molecular sequence of this clone aligns with the gene accession number as a point of reference only. However, individual transcript sequences of the same gene can differ through naturally occurring variations (e.g. polymorphisms), each with its own valid existence. This clone is substantially in agreement with the reference, but a complete review of all prevailing variants is recommended prior to use. [More info](#)

OTI Annotation: This clone was engineered to express the complete ORF with an expression tag. Expression varies depending on the nature of the gene.

Components: The ORF clone is ion-exchange column purified and shipped in a 2D barcoded Matrix tube containing 10ug of transfection-ready, dried plasmid DNA (reconstitute with 100 ul of water).

Reconstitution Method:

1. Centrifuge at 5,000xg for 5min.
2. Carefully open the tube and add 100ul of sterile water to dissolve the DNA.
3. Close the tube and incubate for 10 minutes at room temperature.
4. Briefly vortex the tube and then do a quick spin (less than 5000xg) to concentrate the liquid at the bottom.
5. Store the suspended plasmid at -20°C. The DNA is stable for at least one year from date of shipping when stored at -20°C.

RefSeq: [NM_001134232.2](#)

RefSeq Size: 6320 bp

RefSeq ORF: 825 bp

Locus ID: 54664

UniProt ID: [Q9NUM4](#)

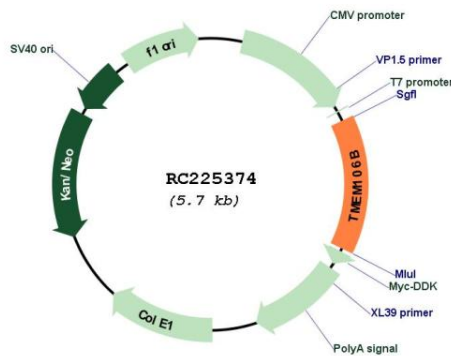
Cytogenetics: 7p21.3

Protein Families: Transmembrane

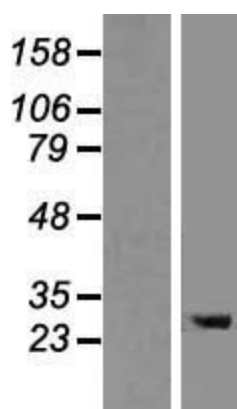
MW: 31.1 kDa

Gene Summary: Involved in dendrite morphogenesis and maintenance by regulating lysosomal trafficking via its interaction with MAP6. May act by inhibiting retrograde transport of lysosomes along dendrites. Required for dendrite branching.[UniProtKB/Swiss-Prot Function]

Product images:



Circular map for RC225374



Western blot validation of overexpression lysate (Cat# [LY427384]) using anti-DDK antibody (Cat# [TA50011-100]). Left: Cell lysates from untransfected HEK293T cells; Right: Cell lysates from HEK293T cells transfected with RC225374 using transfection reagent MegaTran 2.0 (Cat# [TT210002]).