

Product datasheet for **RC225362**

HCCS (NM_001122608) Human Tagged ORF Clone

Product data:

Product Type:	Expression Plasmids
Product Name:	HCCS (NM_001122608) Human Tagged ORF Clone
Tag:	Myc-DDK
Symbol:	HCCS
Synonyms:	CCHL; LSDMCA1; MCOPS7; MLS
Mammalian Cell Selection:	Neomycin
Vector:	pCMV6-Entry (PS100001)
E. coli Selection:	Kanamycin (25 ug/mL)
ORF Nucleotide Sequence:	>RC225362 representing NM_001122608 Red=Cloning site Blue=ORF Green=Tags(s)

TTTTGTAATACGACTCACTATAGGGCGGCCGGAATTCGTCGACTGGATCCGGTACCGAGGAGATCTGCCGCC**CGGATCGCC**

ATGGGTTTGTCTCCATCTGCTCCTGCTGTTGCAGTTCAGGCCTCAAATGCTTCAGCGTCCCCACCTTCAGGATGCCCGATGCATGAAGGGAAAATGAAAGGCTGTCCAGTGAATACAGAGCCATCTGGCCCAACCTGTGAAGAAAACTACTCTGTGCCTGCCACCAGGAACCGCCTATGAGTACGTGGAGTGTCCCATTAGGGCCTGCGGCTGAGAATAAGGAGAACCTAGATCCTCAAATCTGATGCCACCACCAAATCAAACACCAGCTCAGATCAGCCATTTGCATTGTCTACTGTCAGAGAAGAGTCATCCATTCCGAGAGCAGATTCAGAGAAAAAGTGGGTTTACCCTTCTGAGCAGATGTTCTGGAATGCAATGTTAAAGAAAGGGTGAAGTGAAGGATGAGGATATCAGTCAGAAGGATATGTATAATATCATTAGAATTCACAATCAGAATAACGAGCAGGCTTGAAGGAGATTTTGAAGTGGGAAGCCCTCATGCTGCAGAGTGTCTTGTGGTCCATCATTGATCCGGTTTGGAGGAAAGCAAAGAGTATTCACCAAGGGCACGAATTCGTTCTGGATGGGTATGAGTTGCCTTTTGATAGGCACGATTGGATCATAAACCGTTGCGGGACAGAAGTTAGATATGTGATTGATTATTATGATGGTGGTGAAGTCAACAAGGACTACCAGTTCACCATCCTGGACGTCGCTCCTGCCTTAGATTCACCTTCGGCAGTATGGGACAGAATGAAAGTCGCTTGGTGGCGTTGGACCTCG

ACGCGTACGCGGCCGCTCGAGCAGAAACTCATCTCAGAAGAGGATCTGGCAGCAAATGATATCCTGGATTACAAGGATGACGACGATAAGGTTTAA



[View online »](#)

Reconstitution Method:

1. Centrifuge at 5,000xg for 5min.
2. Carefully open the tube and add 100ul of sterile water to dissolve the DNA.
3. Close the tube and incubate for 10 minutes at room temperature.
4. Briefly vortex the tube and then do a quick spin (less than 5000xg) to concentrate the liquid at the bottom.
5. Store the suspended plasmid at -20°C. The DNA is stable for at least one year from date of shipping when stored at -20°C.

RefSeq: [NM_001122608.3](#)

RefSeq ORF: 807 bp

Locus ID: 3052

UniProt ID: [P53701](#)

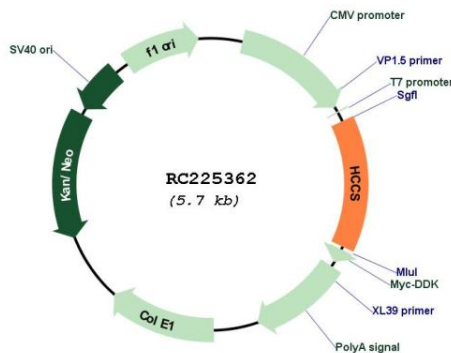
Cytogenetics: Xp22.2

Protein Pathways: Porphyrin and chlorophyll metabolism

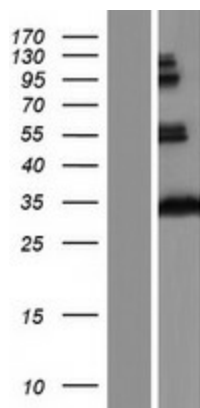
MW: 30.4 kDa

Gene Summary: The protein encoded by this gene is an enzyme that covalently links a heme group to the apoprotein of cytochrome c. Defects in this gene are a cause of microphthalmia syndromic type 7 (MCOPS7). Three transcript variants encoding the same protein have been found for this gene. [provided by RefSeq, Jan 2010]

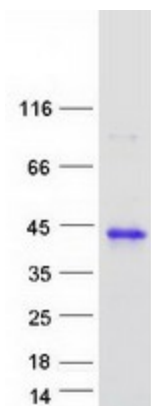
Product images:



Circular map for RC225362



Western blot validation of overexpression lysate (Cat# [LY426535]) using anti-DDK antibody (Cat# [TA50011-100]). Left: Cell lysates from untransfected HEK293T cells; Right: Cell lysates from HEK293T cells transfected with RC225362 using transfection reagent MegaTran 2.0 (Cat# [TT210002]).



Coomassie blue staining of purified HCCS protein (Cat# [TP325362]). The protein was produced from HEK293T cells transfected with HCCS cDNA clone (Cat# RC225362) using MegaTran 2.0 (Cat# [TT210002]).