

Product datasheet for **RC225354**

KCNK16 (NM_001135107) Human Tagged ORF Clone

Product data:

Product Type: Expression Plasmids
Product Name: KCNK16 (NM_001135107) Human Tagged ORF Clone
Tag: Myc-DDK
Symbol: KCNK16
Synonyms: K2p16.1; TALK-1; TALK1
Mammalian Cell Selection: Neomycin
Vector: pCMV6-Entry (PS100001)
E. coli Selection: Kanamycin (25 ug/mL)
ORF Nucleotide Sequence: >RC225354 representing NM_001135107
Red=Cloning site Blue=ORF Green=Tags(s)

TTTTGTAATACGACTCACTATAGGGCGGCCGGAATTCGTCGACTGGATCCGGTACCGAGGAGATCTGCC
GCC**CGATCGCC**

ATGCCAGTGCTGGGCTCTGCAGCTGCTGGGTGGCCGGTGCTGCCCTGCTGCTGGCCTATGTCTGCT
ACCTGCTGCTCGGTGCCACTATCTCCAGCTGCTAGAGAGGCAGGCGGAGGCTCAGTCCAGGGACCAGTT
TCAGTTGGAGAAGCTGCGCTTCTGGAGAACTACACCTGCCTGGACCAGTGGCCATGGAGCAGTTTGTG
CAGGTCATCATGGAAGCCTGGGTGAAAGGTGTGAACCCAAAGGCAACTCTACCAACCCAGCAACTGGG
ACTTTGGCAGCAGTTTCTTTTCAGGCACAGTCGTCCTACTACCATAGGATATGGGAACCTGGCACCCAG
CACAGAGGCAGGTCAGGTCCTTCTGTGTCTTCTATGCCCTGTTGGGCATCCCGCTTAACGTGATCTTCCTC
AACCACCTGGGCACAGGGCTGCGTGCCCATCTGGCCGCCATTGAAAGATGGGAGGACCGTCCAGGGCGT
CCCAGGTAAGTCAAGTCTGGGCTGGCTCTGTTCTGACCCTGGGGACGCTGGTCATTCTCATCTTCCC
ACCCATGGTCTTCAGCCATGTGGAGGGCTGGAGCTTCAGCGAGGGCTTCTACTTTGCTTTCATCACTCTC
AGCACCATTGGCTTTGGGACTATGTTGTTGGTCTGAGGCAAGGCTGTGGAGCCAAGGCGGCTCCAGGCA
GGAGACCCAGGAGAGGCTCTACAGCAGCAAGAGGAGTCCAAGTCACACCCAGGACTTCCCATATCCAA
GAAAGGACTGGGAAGC

ACGCGTACGCGGCCGCTCGAGCAGAACTCATCTCAGAAGAGGATCTGGCAGCAAATGATATCCTGGATT
ACAAGGATGACGACGATAAGGTTTAA



[View online »](#)

Protein Sequence: >RC225354 representing NM_001135107
 Red=Cloning site Green=Tags(s)

MPSAGLCSCWGGRVLP LLLAYVCYLLLGATIFQLLERQAEAQSRDQFQLEKLRFLFENYTC LDQWAMEQFV
 QVIMEAWVKGVNPKGNSTNPSNWDGSSFFFA GTVVTTIGYGNLAPSTEAGQVFCV FYALLGIPLNVIFL
 NHLGTGLRAHLAAIERWEDRPRRSQVLQVLGLALFLTGLTLVILIFPPMVFSHVEGW SFSSEGFYFAFITL
 STIGFDYVVGLRQCGAKAAPGRRPRRGSTAARGVQVTPQDFPISKKGLGS

TRTRPLEQKLISEEDLAANDILDYKDDDDKV

Chromatograms: https://cdn.origene.com/chromatograms/ja1512_b07.zip

Restriction Sites: SgfI-MluI

Cloning Scheme:

Cloning sites used for ORF Shuttling:



* The last codon before the Stop codon of the ORF

ACCN: NM_001135107

ORF Size: 786 bp

OTI Disclaimer: The molecular sequence of this clone aligns with the gene accession number as a point of reference only. However, individual transcript sequences of the same gene can differ through naturally occurring variations (e.g. polymorphisms), each with its own valid existence. This clone is substantially in agreement with the reference, but a complete review of all prevailing variants is recommended prior to use. [More info](#)

OTI Annotation: This clone was engineered to express the complete ORF with an expression tag. Expression varies depending on the nature of the gene.

Components: The ORF clone is ion-exchange column purified and shipped in a 2D barcoded Matrix tube containing 10ug of transfection-ready, dried plasmid DNA (reconstitute with 100 ul of water).

Reconstitution Method:

1. Centrifuge at 5,000xg for 5min.
2. Carefully open the tube and add 100ul of sterile water to dissolve the DNA.
3. Close the tube and incubate for 10 minutes at room temperature.
4. Briefly vortex the tube and then do a quick spin (less than 5000xg) to concentrate the liquid at the bottom.
5. Store the suspended plasmid at -20°C. The DNA is stable for at least one year from date of shipping when stored at -20°C.

RefSeq: [NM_001135107.2](#)

RefSeq ORF: 789 bp

Locus ID: 83795

UniProt ID: [Q96T55](#)

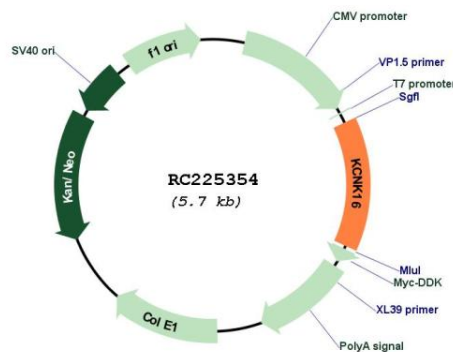
Cytogenetics: 6p21.2

Protein Families: Druggable Genome, Ion Channels: Potassium, Transmembrane

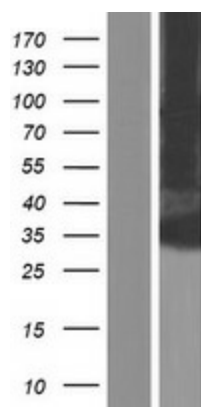
MW: 28.6 kDa

Gene Summary: The protein encoded by this gene belongs to the family of potassium channel proteins containing two pore-forming P domains. This channel is an open rectifier which primarily passes outward current under physiological K⁺ concentrations. This gene is expressed predominantly in the pancreas and is activated at alkaline pH. Several alternatively spliced transcript variants encoding different isoforms have been identified for this gene. [provided by RefSeq, Sep 2008]

Product images:



Circular map for RC225354



Western blot validation of overexpression lysate (Cat# [LY427554]) using anti-DDK antibody (Cat# [TA50011-100]). Left: Cell lysates from untransfected HEK293T cells; Right: Cell lysates from HEK293T cells transfected with RC225354 using transfection reagent MegaTran 2.0 (Cat# [TT210002]).