

Product datasheet for RC225346

GJB6 (NM_001110220) Human Tagged ORF Clone

Product data:

Product Type:	Expression Plasmids
Product Name:	GJB6 (NM_001110220) Human Tagged ORF Clone
Tag:	Myc-DDK
Symbol:	GJB6
Synonyms:	CX30; DFNA3; DFNA3B; DFNB1B; ECTD2; ED2; EDH; HED; HED2
Mammalian Cell Selection:	Neomycin
Vector:	pCMV6-Entry (PS100001)
E. coli Selection:	Kanamycin (25 ug/mL)
ORF Nucleotide Sequence:	>RC225346 ORF sequence Red=Cloning site Blue=ORF Green=Tags(s)

TTTTGTAATACGACTCACTATAGGGCGGCCGGAATTCGTCGACTGGATCCGGTACCGAGGAGATCTGCC
 GCCCGCATCGCC

ATGGATTGGGGACGCTGCACACTTTCATCGGGGTGTCAACAACTCCACCAGCATCGGAAGGTGT
 GGATCACAGTCATCTTTATTTCCGAGTCATGATCCTCGTGGTGGCTGCCAGGAAGTGTGGGTGACGA
 GCAAGAGGACTTCGTCTGCAACACACTGCAACCGGGATGCAAAAATGTGTGCTATGACCACTTTTCCCG
 GTGTCCACATCCGGCTGTGGGCCCTCCAGCTGATCTTCGTCTCCACCCAGCGCTGCTGGTGGCCATGC
 ATGTGGCCTACTACAGGCACGAAACCACTCGCAAGTTCAGGCGAGGAGAGAAGAGGAATGATTTCAAAGA
 CATAGAGGACATTAAGGAGAGGTTTCGGATAGAGGGGTCTGTGGTGGACGTACACCAGCAGCATC
 TTTTCCGAATCATCTTTGAAGCAGCCTTTATGTATGTGTTTACTTCCTTTACAATGGGTACCACTGC
 CCTGGGTGTTGAAATGTGGGATTGACCCCTGCCCAACCTTGTGACTGCTTTATTTCTAGGCCAACAGA
 GAAGACCGTGTGTTACCATTTTATGATTCTGCGTCTGTGATTGTCATGCTTAACTGGCAGAGTTG
 TGCTACCTGCTGCTGAAAGTGTGTTTAGGAGATCAAAGAGAGCACAGACGCAAAAAATCACCCCAATC
 ATGCCCTAAAGGAGAGTAAGCAGAATGAAATGAATGAGCTGATTCAGATAGTGGTCAAAATGCAATCAC
 AGGTTTCCCAAGC

ACGCGTACGCGGCCGCTCGAGCAGAACTCATCTCAGAAGAGGATCTGGCAGCAAATGATATCTGGATT
 ACAAGGATGACGACGATAAGGTTTAA


[View online »](#)

Protein Sequence: >RC225346 protein sequence
 Red=Cloning site Green=Tags(s)

MDWGLTHTFIGGVNKHSTSIGKVWITVIFIFRVMILVVAAQEVWGDEQEDFVCNTLQPGCKNVCYDHFFP
 VSHIRLWALQLIFVSTPALLVAMHVAYYRHETTRKFRRGEKRNDFKDIEDIKKQKVRIEGLWWTYSI
 FFRIIFEAAFMYVFYFLYNGYHLPWVLKCGIDPCPNLVDCFISRPTEKTVFTIFMISASVICMLLNVAEL
 CYLLLVCFRRSKRAQTQKNHPNHALKESKQNMNELISDSGQNAITGFPS

TRTRPLEQKLISEEDLAANDILDYKDDDDKV

Chromatograms: https://cdn.origene.com/chromatograms/mk6192_d12.zip

Restriction Sites: SgfI-MluI

Cloning Scheme:



ACCN: NM_001110220

ORF Size: 783 bp

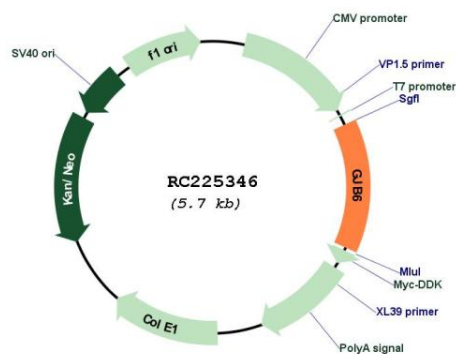
OTI Disclaimer: The molecular sequence of this clone aligns with the gene accession number as a point of reference only. However, individual transcript sequences of the same gene can differ through naturally occurring variations (e.g. polymorphisms), each with its own valid existence. This clone is substantially in agreement with the reference, but a complete review of all prevailing variants is recommended prior to use. [More info](#)

OTI Annotation: This clone was engineered to express the complete ORF with an expression tag. Expression varies depending on the nature of the gene.

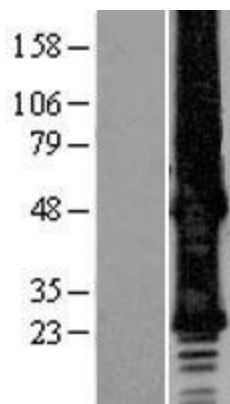
Components: The ORF clone is ion-exchange column purified and shipped in a 2D barcoded Matrix tube containing 10ug of transfection-ready, dried plasmid DNA (reconstitute with 100 ul of water).

Reconstitution Method:	<ol style="list-style-type: none"> 1. Centrifuge at 5,000xg for 5min. 2. Carefully open the tube and add 100ul of sterile water to dissolve the DNA. 3. Close the tube and incubate for 10 minutes at room temperature. 4. Briefly vortex the tube and then do a quick spin (less than 5000xg) to concentrate the liquid at the bottom. 5. Store the suspended plasmid at -20°C. The DNA is stable for at least one year from date of shipping when stored at -20°C.
Note:	Plasmids are not sterile. For experiments where strict sterility is required, filtration with 0.22um filter is required.
RefSeq:	<u>NM_001110220.2, NP_001103690.1</u>
RefSeq Size:	2068 bp
RefSeq ORF:	786 bp
Locus ID:	10804
UniProt ID:	<u>O95452</u>
Cytogenetics:	13q12.11
Protein Families:	Druggable Genome, Transmembrane
MW:	30.4 kDa
Gene Summary:	<p>Gap junctions allow the transport of ions and metabolites between the cytoplasm of adjacent cells. They are formed by two hemichannels, made up of six connexin proteins assembled in groups. Each connexin protein has four transmembrane segments, two extracellular loops, a cytoplasmic loop formed between the two inner transmembrane segments, and the N- and C-terminus both being in the cytoplasm. The specificity of the gap junction is determined by which connexin proteins comprise the hemichannel. In the past, connexin protein names were based on their molecular weight, however the new nomenclature uses sequential numbers based on which form (alpha or beta) of the gap junction is present. This gene encodes one of the connexin proteins. Mutations in this gene have been found in some forms of deafness and in some families with hidrotic ectodermal dysplasia. [provided by RefSeq, Jul 2008]</p>

Product images:



Circular map for RC225346



Western blot validation of overexpression lysate (Cat# [LY426316]) using anti-DDK antibody (Cat# [TA50011-100]). Left: Cell lysates from untransfected HEK293T cells; Right: Cell lysates from HEK293T cells transfected with [RC225347] using transfection reagent MegaTran 2.0 (Cat# [TT210002]).