

Product datasheet for **RC225341**

EEF1D (NM_001130056) Human Tagged ORF Clone

Product data:

Product Type: Expression Plasmids
 Product Name: EEF1D (NM_001130056) Human Tagged ORF Clone
 Tag: Myc-DDK
 Symbol: EEF1D
 Synonyms: EF-1D; EF1D; FP1047
 Mammalian Cell Selection: Neomycin
 Vector: pCMV6-Entry (PS100001)
 E. coli Selection: Kanamycin (25 ug/mL)
 ORF Nucleotide Sequence: >RC225341 representing NM_001130056
 Red=Cloning site Blue=ORF Green=Tags(s)

TTTTGTAATACGACTCACTATAGGGCGGCCGGAATTCGTCGACTGGATCCGGTACCGAGGAGATCTGCC
 GCC**CGCATCGCC**

ATGGCTACAACTCCTAGCACATGAGAAGATCTGGTTCGACAAGTTCAAATATGACGACGCAGAAAGGA
 GATTCTACGAGCAGATGAACGGGCTGTGGCAGGTGCCTCCCGCCAGAGCTCAGGCCCGGGCCTCCAG
 CGGCACCAGCGGAGACCACGGTGAGCTCGTCGTCGGATTGCCAGTCTGGAAGTGGAGAACCAGAGTCTG
 CGTGGCGTGGTACAGGAGCTGCAGCAGGCCATCTCCAAGCTGGAGGCCCGGCTGAACGTGCTGGAGAAGA
 GCTCGCCTGGCCACCGGGCCACGGCCCCACAGACCCAGCACGTATCTCCCATGCGCCAAGTGGAGCCCC
 AGCCAAGAAGCCAGCCACACCAGCAGAGGATGACGAGGATGATGACATTGACCTGTTTGGCAGTGACAAT
 GAGGAGGAGGACAAGGAGGCGGCACAGCTGCGGGAGGAGCGGCTACGGCAGTACGCGGAGAAGAAGGCCA
 AGAAGCCTGCACTGGTGGCCAAGTCTCCATCCTGCTGGATGTCAAGCCTTGGGATGATGAGACGGACAT
 GGCCCAGCTGGAGGCTGTGTGCGCTCTATCCAGCTGGACGGGCTGGTCTGGGGGCTTCCAAGCTGGT
 CCCGTGGGCTACGGTATCCGGAAGCTACAGATTCAGTGTGTGGTGGAGGACGACAAGGTGGGACAGACT
 TGCTGGAGGAGGATCACCAAGTTTGAGGAGCACGTGCAGAGTGTGATATCGCAGCTTCAACAAGAT
 C

ACGCGTACGCGGCCGCTCGAGCAGAACTCATCTCAGAAGAGGATCTGGCAGCAAATGATATCCTGGATT
 ACAAGGATGACGACGATAAGGTTTAA



[View online »](#)

Protein Sequence: >RC225341 representing NM_001130056
Red=Cloning site Green=Tags(s)

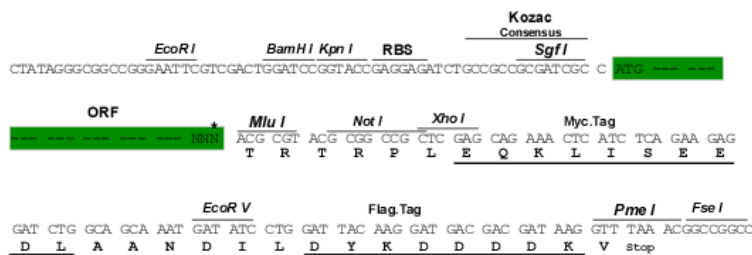
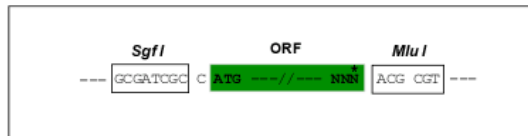
MATNFLAHEKIWFDFKFKYDDAERRFYEQMNGPVAGASRQSSGPGASSGTSGDHGELVVRIASLEVENQSL
 RGVVQELQQAISKLEARLNVLEKSSPGHRATAPQTOHVSPMRQVEPPAKKPATPAEDDEDDIDLFGSDN
 EEDKEAAQLREERLRQYAEKKAKKPALVAKSSILLDKVPWDETDMAQLEACVRSIQLDGLVWGASKLV
 PVGYGIRKLQIQCVVEDDKVGTDLLEEEITKFEHVQSVDAIAFNKI

TRTRPLEQKLISEEDLAANDILDYKDDDDKV

Restriction Sites: SgfI-MluI

Cloning Scheme:

Cloning sites used for ORF Shuttling:



ACCN: NM_001130056

ORF Size: 771 bp

OTI Disclaimer: The molecular sequence of this clone aligns with the gene accession number as a point of reference only. However, individual transcript sequences of the same gene can differ through naturally occurring variations (e.g. polymorphisms), each with its own valid existence. This clone is substantially in agreement with the reference, but a complete review of all prevailing variants is recommended prior to use. [More info](#)

OTI Annotation: This clone was engineered to express the complete ORF with an expression tag. Expression varies depending on the nature of the gene.

Components: The ORF clone is ion-exchange column purified and shipped in a 2D barcoded Matrix tube containing 10ug of transfection-ready, dried plasmid DNA (reconstitute with 100 ul of water).

Reconstitution Method:

1. Centrifuge at 5,000xg for 5min.
2. Carefully open the tube and add 100ul of sterile water to dissolve the DNA.
3. Close the tube and incubate for 10 minutes at room temperature.
4. Briefly vortex the tube and then do a quick spin (less than 5000xg) to concentrate the liquid at the bottom.
5. Store the suspended plasmid at -20°C. The DNA is stable for at least one year from date of shipping when stored at -20°C.

RefSeq: [NM_001130056.4](#)

RefSeq Size: 1204 bp

RefSeq ORF: 774 bp

Locus ID: 1936

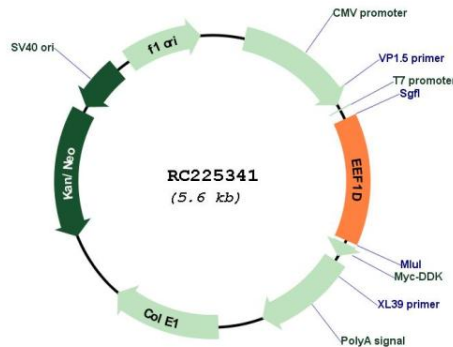
UniProt ID: [P29692](#)

Cytogenetics: 8q24.3

MW: 28.6 kDa

Gene Summary: This gene encodes a subunit of the elongation factor-1 complex, which is responsible for the enzymatic delivery of aminoacyl tRNAs to the ribosome. This subunit, delta, functions as guanine nucleotide exchange factor. It is reported that following HIV-1 infection, this subunit interacts with HIV-1 Tat. This interaction results in repression of translation of host cell proteins and enhanced translation of viral proteins. Several alternatively spliced transcript variants encoding multiple isoforms have been found for this gene. Related pseudogenes have been defined on chromosomes 1, 6, 7, 9, 11, 13, 17, 19.[provided by RefSeq, Aug 2010]

Product images:



Circular map for RC225341