

## Product datasheet for **RC225330**

### **ORAI2 (NM\_001126340) Human Tagged ORF Clone**

#### Product data:

Product Type:	Expression Plasmids
Product Name:	ORAI2 (NM_001126340) Human Tagged ORF Clone
Tag:	Myc-DDK
Symbol:	ORAI2
Synonyms:	C7orf19; CBCIP2; MEM142B; TMEM142B
Mammalian Cell Selection:	Neomycin
Vector:	pCMV6-Entry (PS100001)
E. coli Selection:	Kanamycin (25 ug/mL)
ORF Nucleotide Sequence:	>RC225330 ORF sequence Red=Cloning site Blue=ORF Green=Tags(s)

TTTTGTAATACGACTCACTATAGGGCGCCGGAATTCGTCGACTGGATCCGGTACCGAGGAGATCTGCC  
GCC**CGATCGCC**

ATGAGTGCTGAGCTTAACGTGCCTATCGACCCCTCTGCTCCTGCCTGCCCTGAGCCAGGCCATAAGGGCA  
TGGATTACCGGGACTGGGTCCGCCGAGCTACCTGGAAGTGGTCACTCTAACCACCACTCGGTACAGGC  
CCTGTCGTGGCGGAAGCTCTACCTGAGCAGGGCAAGCTGAAGGCCTCCAGCAGGACCTCCGCCCTCCTC  
TCCGGCTTGGCCATGGTGGCCATGGTGGAGGTGCAGCTGGAGACGCAGTACCAGTACCCGCGCCGCTGC  
TGATTGCCTTCAGCGCCTGCACCAGGTGCTGGTGGCCGTGCACCTGTTCCGCCCTCTCATCAGCACCTG  
CATCCTGCCCAATGTGGAGGCCGTGAGCAACATCCACAACCTGAACTCCATCAGCGAGTCCCGCATGAG  
CGCATGCACCCCTACATCGAGCTGGCCTGGGGTCTCCACCGTGCTTGGCATCCTACTTCTCTGGCCG  
AGGTGGTGTCTGCTGCTGGATCAAGTTCCTCCCGTGGATGCCCGGCCGAGCCTGGCCCCCACCTGG  
CCCTGGGAGTCACACGGGCTGGCAGGCCGCCCTGGTGTCCACCATCATCATGGTGGCCGTGGGCCTCATC  
TTCGTGGTCTTCACCATCCACTTCTACCGCTCCCTGGTGCACCACAAAACGGAGCGCCACAACCGCGAGA  
TCGAGGAGCTCCACAAGCTCAAGTCCAGCTGGACGGGCATGAGCGCAGCCTGCAGGTCTTG

**ACGCGT**ACGCGGCCGCTCGAGCAGAACTCATCTCAGAAGAGGATCTGGCAGCAAATGATATCCTGGATT  
ACAAGGATGACGACGATAAGGTTTAA



[View online »](#)

**Protein Sequence:** >RC225330 protein sequence  
 Red=Cloning site Green=Tags(s)

MSAELNVPIDPSAPACPEPGHGMDYRDWVRRSYLELVTSNHHSVQALSWRKLYLSRAKLKASSRTSALL  
 SGFAMVAMVEVQLETQYQYPRPLLIASFACCTTVLVAVHLFALLISTCILPNVEAVSNIHNLNSISEPHE  
 RMHPYIELAWGFSTVLGILLFLAEVLLCWIKFLPVDARRQPGPPPGSHTGWQAAALVSTIIMVPVGLI  
 FVVFTHFYRSLVRHKTERHNREIEELHKLKVQLDGHERSLQVL

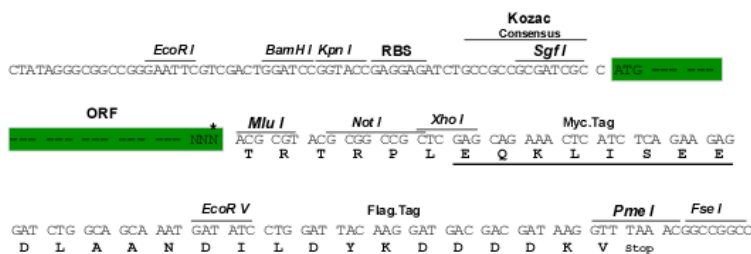
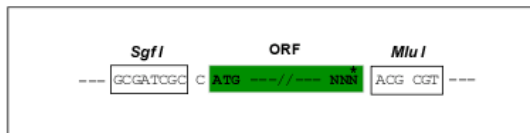
TRTRPLEQKLISEEDLAANDILDYKDDDDKV

**Chromatograms:** [https://cdn.origene.com/chromatograms/mk6106\\_a06.zip](https://cdn.origene.com/chromatograms/mk6106_a06.zip)

**Restriction Sites:** SgfI-MluI

**Cloning Scheme:**

Cloning sites used for ORF Shuttling:



\* The last codon before the Stop codon of the ORF

**ACCN:** NM\_001126340

**ORF Size:** 762 bp

**OTI Disclaimer:** The molecular sequence of this clone aligns with the gene accession number as a point of reference only. However, individual transcript sequences of the same gene can differ through naturally occurring variations (e.g. polymorphisms), each with its own valid existence. This clone is substantially in agreement with the reference, but a complete review of all prevailing variants is recommended prior to use. [More info](#)

**OTI Annotation:** This clone was engineered to express the complete ORF with an expression tag. Expression varies depending on the nature of the gene.

**Components:** The ORF clone is ion-exchange column purified and shipped in a 2D barcoded Matrix tube containing 10ug of transfection-ready, dried plasmid DNA (reconstitute with 100 ul of water).

**Reconstitution Method:**

1. Centrifuge at 5,000xg for 5min.
2. Carefully open the tube and add 100ul of sterile water to dissolve the DNA.
3. Close the tube and incubate for 10 minutes at room temperature.
4. Briefly vortex the tube and then do a quick spin (less than 5000xg) to concentrate the liquid at the bottom.
5. Store the suspended plasmid at -20°C. The DNA is stable for at least one year from date of shipping when stored at -20°C.

**RefSeq:** [NM\\_001126340.3](#)

**RefSeq Size:** 10788 bp

**RefSeq ORF:** 765 bp

**Locus ID:** 80228

**UniProt ID:** [Q96SN7](#)

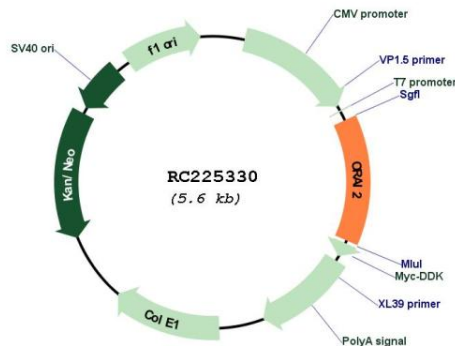
**Cytogenetics:** 7q22.1

**Protein Families:** Transmembrane

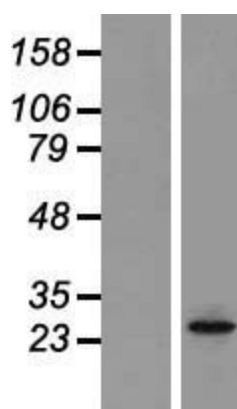
**MW:** 28.6 kDa

**Gene Summary:** Ca(2+) release-activated Ca(2+)-like (CRAC-like) channel subunit which mediates Ca(2+) influx and increase in Ca(2+)-selective current by synergy with the Ca(2+) sensor, STIM1. [UniProtKB/Swiss-Prot Function]

**Product images:**



Circular map for RC225330



Western blot validation of overexpression lysate (Cat# [LY426680]) using anti-DDK antibody (Cat# [TA50011-100]). Left: Cell lysates from untransfected HEK293T cells; Right: Cell lysates from HEK293T cells transfected with RC225330 using transfection reagent MegaTran 2.0 (Cat# [TT210002]).