

Product datasheet for **RC225314**

RIL (PDLIM4) (NM_001131027) Human Tagged ORF Clone

Product data:

Product Type:	Expression Plasmids
Product Name:	RIL (PDLIM4) (NM_001131027) Human Tagged ORF Clone
Tag:	Myc-DDK
Symbol:	RIL
Synonyms:	RIL
Mammalian Cell Selection:	Neomycin
Vector:	pCMV6-Entry (PS100001)
E. coli Selection:	Kanamycin (25 ug/mL)
ORF Nucleotide Sequence:	<p>>RC225314 representing NM_001131027</p> <p>Red=Cloning site Blue=ORF Green=Tags(s)</p>

TTTGTAAATACGACTCACTATAGGGCGGCCGGAATTCGTCGACTGGATCCGGTACCGAGGAGATCTGCC
 GCC**CGATCGCC**

ATGCCCCATTCCGTGACCCTGCGCGGGCCTTCGCCCTGGGGCTTCGCCTGGTGGGCGGCCGGGACTTCA
 GCGCGCCCCTACCATCTCACGGGTCCATGCTGGCAGCAAGGCTGCATTGGCTGCCCTGTGCCAGGAGA
 CCTGATCCAGGCCATCAATGGTGAGAGCACAGAGCTCATGACACACCTGGAGGCACAGAACCGCATCAAG
 GGCTGCCACGATCACCTCACACTGTCTGTGAGCAGGCCTGAGGGTAGGAGCTGGCCAGTGCCCTGATG
 ACAGCAAGGCTCAGGCACACAGGATCCACATCGATCCTGAGATCCAGGACGGCAGCCCAACAACAGCAG
 GCGGCCCTCAGGCACCGGACTGGGCCAGAAGATGGCAGACCAAGCCTGGGATCTCCATATGGACAACCC
 CCTCGCTTTCCAGTCCCTCACAATGGCAGCAGCGAGGCCACCCTGCCAGCCAGATGAGCACCTGCATG
 TGTCTCACCCCCAGCGCTGACCCAGCCAGAGGCCTCCCGCGGAGCCGGGACTGCAGAGTCGACCTGGG
 CTCCGAGGTGTACAGGATGCTGCGGGAGCCAGCCAGCCCGTGGCCGCGGAGCCCAAGCAGTCAGGCTCC
 TTCCGCTACTTGAGGGCATGCTAGAGGCCGCGAGGGCGGGGCACCATCGTCAAGGCACGGGACAAGCT
 CTACCATCCCGAGTGCTTCATGTGCAGTGACTGCGGCC

ACGCGTACGCGGCCGCTCGAGCAGAACTCATCTCAGAAGAGGATCTGGCAGCAAATGATATCCTGGATT
 ACAAGGATGACGACGATAAGGTTTAA


[View online »](#)

Protein Sequence: >RC225314 representing NM_001131027
 Red=Cloning site Green=Tags(s)

MPHSVTLRGPSWGFRLVGGRDFSAPLTISR VHAGSKAALALCPGDLIQAINGESTELMTHLEAQNRIK
 GCHDHLTLSVSRPEGRSWPSAPDDSKAQAHRIHIDPEIQDGSPTTSRRPSGTGTGPEDGRPSLGSPYGGP
 PRFPVPHNGSSEATLPAQMSTLHVSPPPSADPARGLPRSRDCRVDLGSEVYRMLREPAEPVAAEPKQSGS
 FRYLQGMLEAGEGGAPSSRHGTSSTIPSASCAVTAA

TRTRPLEQKLISEEDLAANDILDYKDDDDKV

Chromatograms: https://cdn.origene.com/chromatograms/ja1502_f10.zip

Restriction Sites: SgfI-MluI

Cloning Scheme:



ACCN: NM_001131027

ORF Size: 738 bp

OTI Disclaimer: The molecular sequence of this clone aligns with the gene accession number as a point of reference only. However, individual transcript sequences of the same gene can differ through naturally occurring variations (e.g. polymorphisms), each with its own valid existence. This clone is substantially in agreement with the reference, but a complete review of all prevailing variants is recommended prior to use. [More info](#)

OTI Annotation: This clone was engineered to express the complete ORF with an expression tag. Expression varies depending on the nature of the gene.

Components: The ORF clone is ion-exchange column purified and shipped in a 2D barcoded Matrix tube containing 10ug of transfection-ready, dried plasmid DNA (reconstitute with 100 ul of water).

Reconstitution Method:

1. Centrifuge at 5,000xg for 5min.
2. Carefully open the tube and add 100ul of sterile water to dissolve the DNA.
3. Close the tube and incubate for 10 minutes at room temperature.
4. Briefly vortex the tube and then do a quick spin (less than 5000xg) to concentrate the liquid at the bottom.
5. Store the suspended plasmid at -20°C. The DNA is stable for at least one year from date of shipping when stored at -20°C.

Note: Plasmids are not sterile. For experiments where strict sterility is required, filtration with 0.22um filter is required.

RefSeq: [NM_001131027.1](#), [NP_001124499.1](#)

RefSeq ORF: 741 bp

Locus ID: 8572

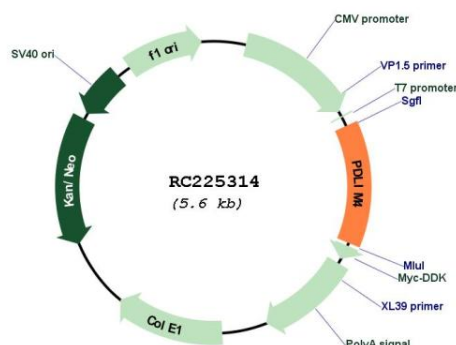
UniProt ID: [P50479](#)

Cytogenetics: 5q31.1

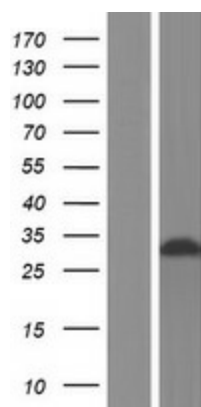
MW: 25.7 kDa

Gene Summary: This gene encodes a protein which may be involved in bone development. Mutations in this gene are associated with susceptibility to osteoporosis. [provided by RefSeq, Nov 2009]

Product images:



Circular map for RC225314



Western blot validation of overexpression lysate (Cat# [LY427365]) using anti-DDK antibody (Cat# [TA50011-100]). Left: Cell lysates from untransfected HEK293T cells; Right: Cell lysates from HEK293T cells transfected with RC225314 using transfection reagent MegaTran 2.0 (Cat# [TT210002]).