

Product datasheet for RC225300

NUDT7 (NM_001105663) Human Tagged ORF Clone

Product data:

Product Type:	Expression Plasmids
Product Name:	NUDT7 (NM_001105663) Human Tagged ORF Clone
Tag:	Myc-DDK
Symbol:	NUDT7
Mammalian Cell Selection:	Neomycin
Vector:	pCMV6-Entry (PS100001)
E. coli Selection:	Kanamycin (25 ug/mL)
ORF Nucleotide Sequence:	>RC225300 representing NM_001105663 Red=Cloning site Blue=ORF Green=Tags(s)

TTTTGTAATACGACTCACTATAGGGCGGCCGGAATTCGTCGACTGGATCCGGTACCGAGGAGATCTGCC
 GCCCGCATCGCC

ATGTCACGACTTGGTCTTCCCGAGGAGCCAGTCAGAAACAGTTTGCTAGATGATGCTAAGGCCCGCTTAA
 GAAAGTATGATATTGGAGGCAAATATTCTCACTTGCCATATAACAAATACTCCGTCCTTTTGCCATTGGT
 GGCTAAGAAGGAAAACATCCATTTGTTGTTACCGTCCGGTCAGAGAAGCTAAGAAGGGCCCTGGAGAA
 GTTTGCTTCCCTGGAGGTAAGCGTGACCCTACAGACATGGATGATGCAGCCACAGCTCTCCGGAAGCCC
 AGGAGGAAGTGGTCTCCGTCCTACCAAGTGGAAGTTGTCTGCTGCCTGGTGCCATGTCTTATTGATA
 AGATACATTGATACTCCATTTGTGGGTTTAAATAGACCACAACCTCCAGGCCAGCCGAATCCTGCTGAA
 GTTAAGGATGTATTCTGGTGCCTCTGGCCTATTTCTGCATCCACAGGTCCATGACCAGCATTACGTCA
 CACGTCTTGGTCACCGTTTTATTAATCATATCTTTGAGTACACAAACCCTGAAGACGGTGTCACTTACCA
 GATCAAGGGAATGACGGCAAACCTTGAGTGTTGGTGGCCTTTATCATTTTGGAAAAAAACCCACCTTT
 GAGGTTCAATTTAATCTTAATGATGTATTAGCATCCTCTGAAGAGTTATTCCTGAAGGTTCAAAAAAG
 CTACAAGCAGTTA

ACGCGTACGCGGCCGCTCGAGCAGAACTCATCTCAGAAGAGGATCTGGCAGCAAATGATATCCTGGATT
 ACAAGGATGACGACGATAAGGTTTAA


[View online »](#)

Protein Sequence: >RC225300 representing NM_001105663
 Red=Cloning site Green=Tags(s)

MSRLGLPEEPVRNSLLDDAKARLRKYDIGGKYSHLPYNKYSVLLPLVAKEGKLHLLFTVRSEKLRRAPGE
 VCFPGGKRDPDTMDDAATALREAQEEVGLRPHQVEVVCCLVPCLIDTDLITPFVGLIDHNFQAQPNPAE
 VKDVFVPLAYFLHPQVHDQHYVTRLGHRFINHIFEYTNPEDGVTYQIKGMTANLAVLVAFIILEKKPTF
 EVQFNLDVLSSEELFLKVHKKATSRL

TRTRPLEQKLISEEDLAANDILDYKDDDDKV

Chromatograms: https://cdn.origene.com/chromatograms/mk8033_b07.zip

Restriction Sites: SgfI-MluI

Cloning Scheme:



ACCN: NM_001105663

ORF Size: 714 bp

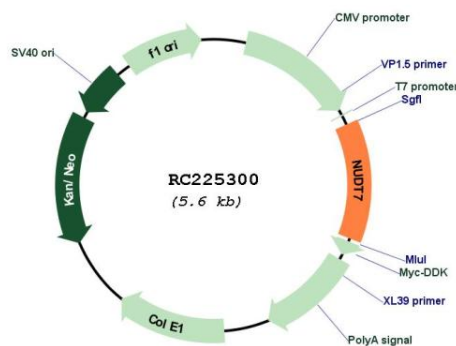
OTI Disclaimer: Due to the inherent nature of this plasmid, standard methods to replicate additional amounts of DNA in E. coli are highly likely to result in mutations and/or rearrangements. Therefore, OriGene does not guarantee the capability to replicate this plasmid DNA. Additional amounts of DNA can be purchased from OriGene with batch-specific, full-sequence verification at a reduced cost. Please contact our customer care team at custsupport@origene.com or by calling 301.340.3188 option 3 for pricing and delivery.

The molecular sequence of this clone aligns with the gene accession number as a point of reference only. However, individual transcript sequences of the same gene can differ through naturally occurring variations (e.g. polymorphisms), each with its own valid existence. This clone is substantially in agreement with the reference, but a complete review of all prevailing variants is recommended prior to use. [More info](#)

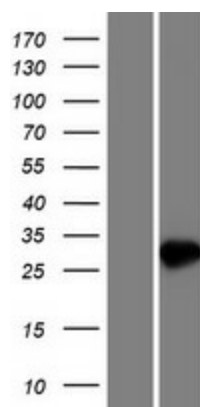
OTI Annotation: This clone was engineered to express the complete ORF with an expression tag. Expression varies depending on the nature of the gene.

Components:	The ORF clone is ion-exchange column purified and shipped in a 2D barcoded Matrix tube containing 10ug of transfection-ready, dried plasmid DNA (reconstitute with 100 ul of water).
Reconstitution Method:	<ol style="list-style-type: none"> 1. Centrifuge at 5,000xg for 5min. 2. Carefully open the tube and add 100ul of sterile water to dissolve the DNA. 3. Close the tube and incubate for 10 minutes at room temperature. 4. Briefly vortex the tube and then do a quick spin (less than 5000xg) to concentrate the liquid at the bottom. 5. Store the suspended plasmid at -20°C. The DNA is stable for at least one year from date of shipping when stored at -20°C.
Note:	Plasmids are not sterile. For experiments where strict sterility is required, filtration with 0.22um filter is required.
RefSeq:	NM_001105663.3
RefSeq ORF:	717 bp
Locus ID:	283927
UniProt ID:	P0C024
Cytogenetics:	16q23.1
MW:	26.8 kDa
Gene Summary:	The protein encoded by this gene is a member of the Nudix hydrolase family. Nudix hydrolases eliminate potentially toxic nucleotide metabolites from the cell and regulate the concentrations and availability of many different nucleotide substrates, cofactors, and signaling molecules. Alternatively spliced transcript variants encoding multiple isoforms have been found for this gene. [provided by RefSeq, Aug 2011]

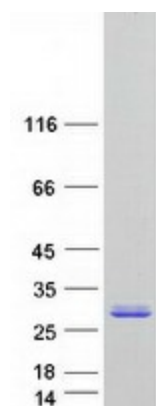
Product images:



Circular map for RC225300



Western blot validation of overexpression lysate (Cat# [LY426294]) using anti-DDK antibody (Cat# [TA50011-100]). Left: Cell lysates from untransfected HEK293T cells; Right: Cell lysates from HEK293T cells transfected with RC225300 using transfection reagent MegaTran 2.0 (Cat# [TT210002]).



Coomassie blue staining of purified NUDT7 protein (Cat# [TP325300]). The protein was produced from HEK293T cells transfected with NUDT7 cDNA clone (Cat# RC225300) using MegaTran 2.0 (Cat# [TT210002]).