

Product datasheet for **RC225295**

IGF2 (NM_001127598) Human Tagged ORF Clone

Product data:

Product Type: Expression Plasmids
Product Name: IGF2 (NM_001127598) Human Tagged ORF Clone
Tag: Myc-DDK
Symbol: IGF2
Synonyms: C11orf43; GRDF; IGF-II; PP9974; SRS3
Mammalian Cell Selection: Neomycin
Vector: pCMV6-Entry (PS100001)
E. coli Selection: Kanamycin (25 ug/mL)
ORF Nucleotide Sequence: >RC225295 representing NM_001127598
Red=Cloning site Blue=ORF Green=Tags(s)

TTTTGTAATACGACTCACTATAGGGCGGCCGGAATTCGTCGACTGGATCCGGTACCGAGGAGATCTGCC
GCC**CGATCGCC**

ATGGTTTCCCCAGACCCCAAATTATCGTGGTGGCCCCGAGACCGAACTCGCGTCTATGCAAGTCCAAC
GCACTGAGGACGGGGTAACCATTATCCAGATATTTGGTGGGCCGAAAGGCGAGCTACTTAGACGCAC
CCCGGTGAGCTCGGCCATGCAGACCAATGGGAATCCCAATGGGAAGTCGATGCTGGTCTTCTCACC
TTCTTGGCCTTCGCCTCGTGTGCTGCTTACCGCCCCAGTGAGACCCTGTGCGGGGGGAGCTGG
TGGACACCCTCCAGTTCGTCTGTGGGACCGCGCTTCTACTTCAGCAGGCCCGCAAGCCGTGTGAGCCG
TCGCAGCCGTGGCATCGTTGAGGAGTGCTGTTCCGCAGCTGTGACCTGGCCCTCCTGGAGACGTA
GCTACCCCGCCAAGTCCGAGAGGGACGTGTCGACCCCTCCGACCGTGTTCGGACAACCTCCCCAGAT
ACCCCGTGGGCAAGTCTTCCAATATGACACCTGGAAGCAGTCCACCCAGCGCCTGCGCAGGGGCTGCC
TGCCCTCCTGCGTGCCCGCCGGGGTACGTGCTCGCCAAGGAGCTCGAGGCGTTCAGGGAGGCCAAACGT
CACCGTCCCCTGATTGCTCTACCCACCAAGACCCGCCACGGGGGCGCCCCCAGAGATGGCCAGCA
ATCGGAAG

ACGCGTACGCGGCCGCTCGAGCAGAACTCATCTCAGAAGAGGATCTGGCAGCAAATGATATCCTGGATT
ACAAGGATGACGACGATAAGGTTTAA



[View online »](#)

Reconstitution Method:

1. Centrifuge at 5,000xg for 5min.
2. Carefully open the tube and add 100ul of sterile water to dissolve the DNA.
3. Close the tube and incubate for 10 minutes at room temperature.
4. Briefly vortex the tube and then do a quick spin (less than 5000xg) to concentrate the liquid at the bottom.
5. Store the suspended plasmid at -20°C. The DNA is stable for at least one year from date of shipping when stored at -20°C.

RefSeq: [NM_001127598.3](#)

RefSeq ORF: 711 bp

Locus ID: 3481

UniProt ID: [P01344](#)

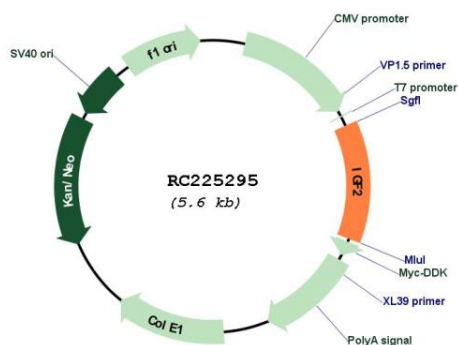
Cytogenetics: 11p15.5

Protein Families: Druggable Genome, ES Cell Differentiation/IPS, Secreted Protein

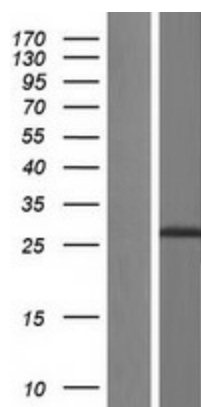
MW: 26.2 kDa

Gene Summary: This gene encodes a member of the insulin family of polypeptide growth factors, which are involved in development and growth. It is an imprinted gene, expressed only from the paternal allele, and epigenetic changes at this locus are associated with Wilms tumour, Beckwith-Wiedemann syndrome, rhabdomyosarcoma, and Silver-Russell syndrome. A read-through INS-IGF2 gene exists, whose 5' region overlaps the INS gene and the 3' region overlaps this gene. Alternatively spliced transcript variants encoding different isoforms have been found for this gene. [provided by RefSeq, Oct 2010]

Product images:



Circular map for RC225295



Western blot validation of overexpression lysate (Cat# [LY426818]) using anti-DDK antibody (Cat# [TA50011-100]). Left: Cell lysates from untransfected HEK293T cells; Right: Cell lysates from HEK293T cells transfected with RC225295 using transfection reagent MegaTran 2.0 (Cat# [TT210002]).