

Product datasheet for **RC225279**

STOX1 (NM_001130159) Human Tagged ORF Clone

Product data:

Product Type: Expression Plasmids
Product Name: STOX1 (NM_001130159) Human Tagged ORF Clone
Tag: Myc-DDK
Symbol: STOX1
Synonyms: C10orf24
Mammalian Cell Selection: Neomycin
Vector: pCMV6-Entry (PS100001)
E. coli Selection: Kanamycin (25 ug/mL)
ORF Nucleotide Sequence: >RC225279 representing NM_001130159
 Red=Cloning site Blue=ORF Green=Tags(s)

TTTTGTAATACGACTCACTATAGGGCGGCCGGAATTCGTCGACTGGATCCGGTACCGAGGAGATCTGCC
 GCC**CGATCGCC**

ATGGCCCCGCCCGTGCAGCTGGCGCCGGGCTCGCTGGCGCTAGTGCTGTGCCGGCTGGAGGCGCAGAAGG
 CGGCGGGGGCCGCGGAGGAGCCTGGTGGGCGCGCGGTGTTCCGCGCTTCCGTCGCGCAACGCGCGCTG
 CTTCTGGAACGCGCGGCTGGCGCGCGCCCTCGCGGCTGGCCTCCAGGGCTGGCTGCGCGGGGGGTG
 CTGCTGGTGCAGCGCCCCCGCCTGCCTGCAGGTGCTGCGCGATGCCTGGCGGCGCCGGCCCTCGCGC
 CGCCGCGCGGCTCCGCATCAGGGCGGTGGGTGATGTCTTCCAGTGCAAATGAATCCAATAACTCAATC
 TCAGTTTCGTACCTTTGGGTGAAGTCTTTGCTGTGCTATATCTGATATGAATACAGCTCAGATTGTAGTA
 ACGCAGGAATCACTTTTGAGCGTTTGATGAAACATTACCCAGGCATTGCAATCCATCGGAAGATTC
 TTTATACCACTCTGGAAACGCTGATTAAGAAAGGAAGATTTATCACACTGGAGAAGGATACTTCATAGT
 TACTCCTCAGACTTACTTCATTACAAATACAACCACCCAGGAAAATAAGAGAATGCTGCCATCAGATGAA
 AGTCGCTGATGCCAGCTTCCATGACATATCTGGACACAGAGTCTGGGATC

ACGCGTACGCGGGCGCTCGAGCAGAACTCATCTCAGAAGAGGATCTGGCAGCAAATGATATCCTGGATT
 ACAAGGATGACGACGATAAGGTTTAA



[View online »](#)

Protein Sequence: >RC225279 representing NM_001130159

Red=Cloning site Green=Tags(s)

MARPVQLAPGSLALVLCRLEAQKAAGAAEPPGGRAVFRAFRRANARCFWNARLARAASRLAFQGWLRGV
 LLVRAPPAQLVLRDAWRRRALRPPRGFRIRAVGDVFPVQMNPI TQSQFVPLGEVLCCAISDMNTAQIVV
 TQESLLERLMKHYPGIAIPSEDILYTTLTGLIKERKIYHTGEGYFIVTPQTYFITNTTTQENKRMLPSDE
 SRLMPASMTYLDTESGI

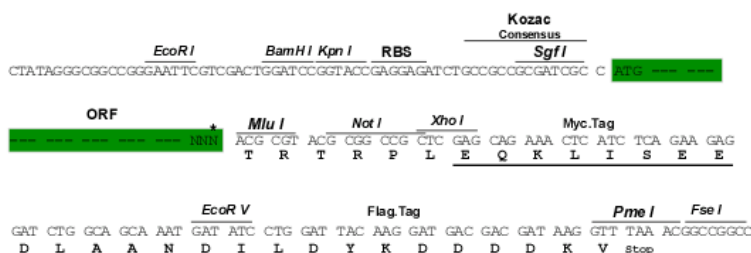
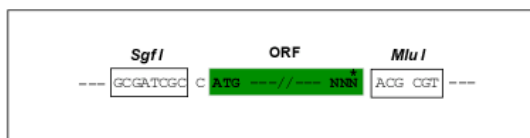
TRTRPLEQKLISEEDLAANDILDYKDDDDKV

Restriction Sites:

Sgfl-MluI

Cloning Scheme:

Cloning sites used for ORF Shuttling:



* The last codon before the Stop codon of the ORF

ACCN: NM_001130159

ORF Size: 681 bp

OTI Disclaimer: The molecular sequence of this clone aligns with the gene accession number as a point of reference only. However, individual transcript sequences of the same gene can differ through naturally occurring variations (e.g. polymorphisms), each with its own valid existence. This clone is substantially in agreement with the reference, but a complete review of all prevailing variants is recommended prior to use. [More info](#)

OTI Annotation: This clone was engineered to express the complete ORF with an expression tag. Expression varies depending on the nature of the gene.

Components: The ORF clone is ion-exchange column purified and shipped in a 2D barcoded Matrix tube containing 10ug of transfection-ready, dried plasmid DNA (reconstitute with 100 ul of water).

Reconstitution Method:

1. Centrifuge at 5,000xg for 5min.
2. Carefully open the tube and add 100ul of sterile water to dissolve the DNA.
3. Close the tube and incubate for 10 minutes at room temperature.
4. Briefly vortex the tube and then do a quick spin (less than 5000xg) to concentrate the liquid at the bottom.
5. Store the suspended plasmid at -20°C. The DNA is stable for at least one year from date of shipping when stored at -20°C.

RefSeq: [NM_001130159.2](#), [NP_001123631.1](#)

RefSeq Size: 1237 bp

RefSeq ORF: 684 bp

Locus ID: 219736

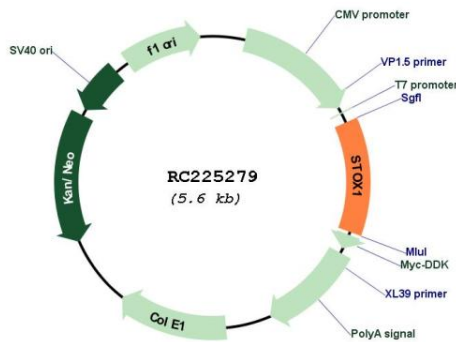
UniProt ID: [Q6ZVD7](#)

Cytogenetics: 10q22.1

MW: 25.4 kDa

Gene Summary: The protein encoded by this gene may function as a DNA binding protein. Mutations in this gene are associated with pre-eclampsia/eclampsia 4 (PEE4). Alternatively spliced transcript variants encoding different isoforms have been found for this gene. [provided by RefSeq, Sep 2009]

Product images:



Circular map for RC225279