

Product datasheet for **RC225278**

DMRT2 (NM_001130865) Human Tagged ORF Clone

Product data:

Product Type:	Expression Plasmids
Product Name:	DMRT2 (NM_001130865) Human Tagged ORF Clone
Tag:	Myc-DDK
Symbol:	DMRT2
Synonyms:	DSXL-2
Mammalian Cell Selection:	Neomycin
Vector:	pCMV6-Entry (PS100001)
E. coli Selection:	Kanamycin (25 ug/mL)
ORF Nucleotide Sequence:	>RC225278 representing NM_001130865 Red=Cloning site Blue=ORF Green=Tags(s)

TTTTGTAATACGACTCACTATAGGGCGGCCGGAATTCGTCGACTGGATCCGGTACCGAGGAGATCTGCC
GCC**CGATCGCC**

ATGGCCGACCCGAGGCTGGCTCCGCGGCCGGGACTGGGAGATCGATGTCGAGAGCCTGGAGCTGGAAG
AGGACGTCTGCGGGCGCCCGGTCCACGCCCCCGGGCCAGCCCGCCGCGCGGACGGGACTGCGA
GGACGACGAAGATGACGACGGGTGGACGAAGACCGGAAGAAGAGGGCGACGGCGAGGAGGCAGGCGCG
TCCCCGGGATGCCCGCCAGCCGGAGCAGCGGGGGGACCGCAGCCGAGGCCCGCTCGCGCCTCAGG
CCTCACCCGCGCACCGGTCCCGAGAGCGCTGCACTCCGCGGGCGGGCGCGGAGCCGCGCAAGCT
GAGCCGCACGCCAAGTGCAGCGCTGCCGCAACCACGGCGTGGTGTCTGCCTGAAGGGCCACAAGCGC
TTCTGTCGCTGGCGGACTGCCAGTGCGCCAAGTGCCTGCTGGTGGTGGAGCGGCAGCGCTCATGGCCG
CCCAGGTGGCGCTCCGGAGGCAGCAGGCCACCGAGGACAAGAAGGGGCTTCCGGGAAACAGAATAATTT
CGAGCGCAAAGCTGTGTACCAGAGGCAAGTCAGAGCCCCAGTTTGCTGGCCAAAAGCATTTTAGAAGTT
CTCCTTGGATTATTCTACAGCTATTATGTGTACATAATGAACCATCTT

ACGCGTACGCGGGCGCTCGAGCAGAACTCATCTCAGAAGAGGATCTGGCAGCAATGATATCTGGATT
ACAAGGATGACGACGATAAGGTTTAA



[View online »](#)

Protein Sequence: >RC225278 representing NM_001130865
 Red=Cloning site Green=Tags(s)

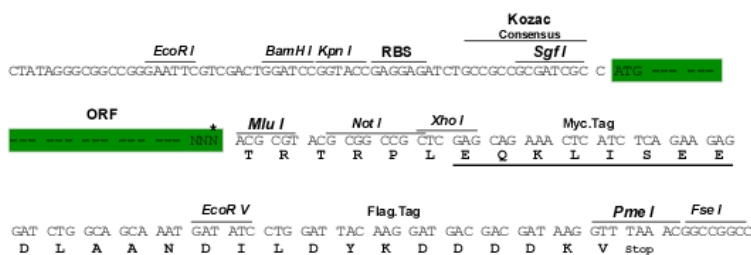
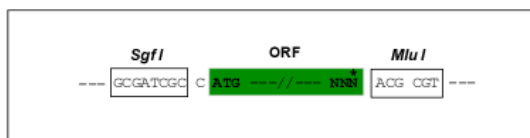
MADPQAGSAAAGDWEIDVESLELEEDVCGAPRSTPPGSPPPADGDCEDDEDDGVDEDAEEEGDGEEAGA
 SPGMFGQPEQRGGPQPRPLAPQASPAGTGPRERCTPAGGGAEPKLSRTPKCARCRNHGVVSLKGGHGR
 FCRWRDCQCANCLLVVERQQRVMAAQVALRRQATKEDKKGLSGKQNNFERKAVYQQRVWRAPSLAKSILEV
 LLGLFYSYVVYIMNHL

TRTRPLEQKLISEEDLAANDILDYKDDDDKV

Restriction Sites: SgfI-MluI

Cloning Scheme:

Cloning sites used for ORF Shuttling:



ACCN: NM_001130865

ORF Size: 678 bp

OTI Disclaimer: The molecular sequence of this clone aligns with the gene accession number as a point of reference only. However, individual transcript sequences of the same gene can differ through naturally occurring variations (e.g. polymorphisms), each with its own valid existence. This clone is substantially in agreement with the reference, but a complete review of all prevailing variants is recommended prior to use. [More info](#)

OTI Annotation: This clone was engineered to express the complete ORF with an expression tag. Expression varies depending on the nature of the gene.

Components: The ORF clone is ion-exchange column purified and shipped in a 2D barcoded Matrix tube containing 10ug of transfection-ready, dried plasmid DNA (reconstitute with 100 ul of water).

Reconstitution Method:

1. Centrifuge at 5,000xg for 5min.
2. Carefully open the tube and add 100ul of sterile water to dissolve the DNA.
3. Close the tube and incubate for 10 minutes at room temperature.
4. Briefly vortex the tube and then do a quick spin (less than 5000xg) to concentrate the liquid at the bottom.
5. Store the suspended plasmid at -20°C. The DNA is stable for at least one year from date of shipping when stored at -20°C.

RefSeq: [NM_001130865.2](#), [NP_001124337.1](#)

RefSeq Size: 2383 bp

RefSeq ORF: 681 bp

Locus ID: 10655

UniProt ID: [Q9Y5R5](#)

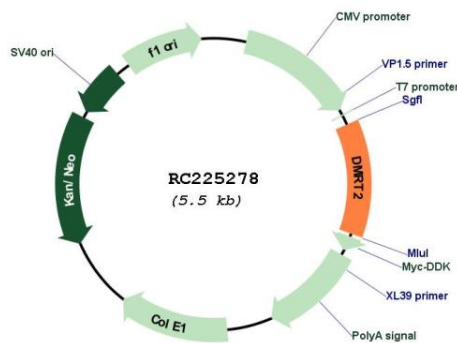
Cytogenetics: 9p24.3

Protein Families: Transcription Factors, Transmembrane

MW: 24.5 kDa

Gene Summary: The protein encoded by this gene belongs to the DMRT gene family, sharing a DM DNA-binding domain with *Drosophila* 'doublesex' (dsx) and *C. elegans* mab3, genes involved in sex determination in these organisms. Also, this gene is located in a region of the human genome (chromosome 9p24.3) associated with gonadal dysgenesis and XY sex reversal. Hence this gene is one of the candidates for sex-determining gene(s) on chr 9. [provided by RefSeq, Apr 2010]

Product images:



Circular map for RC225278