

## Product datasheet for RC225273

### STYX (NM\_001130701) Human Tagged ORF Clone

#### Product data:

**Product Type:** Expression Plasmids  
**Product Name:** STYX (NM\_001130701) Human Tagged ORF Clone  
**Tag:** Myc-DDK  
**Symbol:** STYX  
**Mammalian Cell Selection:** Neomycin  
**Vector:** pCMV6-Entry (PS100001)  
**E. coli Selection:** Kanamycin (25 ug/mL)  
**ORF Nucleotide Sequence:** >RC225273 ORF sequence  
 Red=Cloning site Blue=ORF Green=Tags(s)

TTTTGTAAACGACTCACTATAGGGCGGCCGGAATTCGTCGACTGGATCCGGTACCGAGGAGATCTGCCGCCGCGATCGCC

ATGGAGGACGTGAAGCTGGAGTTCCTTCCCTTCCACAGTGCAAGGAAGACGCCGAGGAGTGGACCTACC  
 CTATGAGACGAGAGATGCAGGAAATTTACCTGGATTGTTCTTAGGCCCATATTCATCTGCTATGAAAAG  
 CAAGCTACCTGTACTACAGAAACATGGAATAACCCATATAATATGCATACGACAAATATTGAAGCAAAC  
 TTTATTAACCAAACCTTTCAGCAGTTATTTAGATATTTAGTCTGGATATTGCAGATAATCCAGTTGAAA  
 ATATAATACGTTTTTCCCTATGACTAAGGAATTTATTGATGGGAGCTTACAAATGGGAGGAAAAGTTCT  
 TGTGCATGGAAATGCAGGGATCTCCAGAAGTGACGCCTTTGTTATTGCATACATTATGGAAACATTTGGA  
 ATGAAGTACAGAGATGCTTTTGCTTATGTTCAAGAAAGAAGATTTGTATTAATCCTAATGCTGGATTTG  
 TCCATCAACTTCAGGAATATGAAGCCATCTACCTAGCAAAATTAACAATACAGATGATGTCACCACTCCA  
 GATAGAAAGGTCATTATCTGTTCACTTCTGGTACCACAGGCAGTTTGAAGAGAACACATGAAGAAGAGGAT  
 GATTTTGAACCATGCAAGTGGCGACTGCACAGAATGGC

ACGCGTACGCGGCCGCTCGAGCAGAACTCATCTCAGAAGAGGATCTGGCAGCAAATGATATCCTGGATT  
 ACAAGGATGACGACGATAAGGTTTAA

**Protein Sequence:** >RC225273 protein sequence  
 Red=Cloning site Green=Tags(s)

MEDVKLEFPSLPQCKEDAEWTYPMRREMQEILPGLFLGPYSSAMKSKLPVLQKHGITHIICIRQNIEN  
 FIKPNFQQLFRYLVLDIADNPVENIIRFFPMTKEFIDGSLQMGKVLVHGNAGISRSAFVIAYIMETFG  
 MKYRDAFAYVQERRFCINPNAGFVHQLQEYEAIIYLAKLTIQMSPLQIERSLSVHSGTTGSLKRTHEEED  
 DFGTMQVATAQNG

TRTRPLEQKLISEEDLAANDILDYKDDDDKV

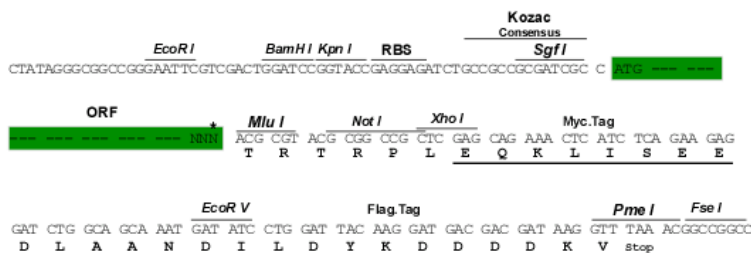

[View online »](#)

**Chromatograms:** [https://cdn.origene.com/chromatograms/mk6306\\_d10.zip](https://cdn.origene.com/chromatograms/mk6306_d10.zip)

Restriction Sites: Sgfl-MluI

### Cloning Scheme:

Cloning sites used for ORF Shuttling:



\* The last codon before the Stop codon of the ORF

ACCN: NM 001130701

ORF Size: 669 bp

**OTI Disclaimer:** The molecular sequence of this clone aligns with the gene accession number as a point of reference only. However, individual transcript sequences of the same gene can differ through naturally occurring variations (e.g. polymorphisms), each with its own valid existence. This clone is substantially in agreement with the reference, but a complete review of all prevailing variants is recommended prior to use. [More info](#)

**OTI Annotation:** This clone was engineered to express the complete ORF with an expression tag. Expression varies depending on the nature of the gene.

**Components:** The ORF clone is ion-exchange column purified and shipped in a 2D barcoded Matrix tube containing 10ug of transfection-ready, dried plasmid DNA (reconstitute with 100 ul of water).

**Reconstitution Method:**

1. Centrifuge at 5,000xg for 5min.
2. Carefully open the tube and add 100ul of sterile water to dissolve the DNA.
3. Close the tube and incubate for 10 minutes at room temperature.
4. Briefly vortex the tube and then do a quick spin (less than 5000xg) to concentrate the liquid at the bottom.
5. Store the suspended plasmid at -20°C. The DNA is stable for at least one year from date of shipping when stored at -20°C.

RefSeq: NM\_001130701.2

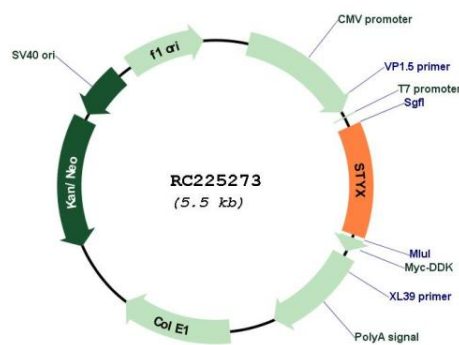
RefSeq Size: 4631 bp

RefSeq ORF: 672 bp

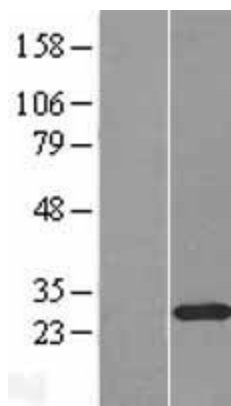
Locus ID: 6815

|                   |  |
|-------------------|--|
| UniProt ID:       | <a href="#">Q8WUJ0</a>   |
| Cytogenetics:     | 14q22.1  |
| Protein Families: | Druggable Genome, Phosphatase  |
| MW:               | 25.5 kDa   |
| Gene Summary:     | The protein encoded by this gene is a pseudophosphatase, able to bind potential substrates but lacking an active catalytic loop. The encoded protein may be involved in spermiogenesis. Two transcript variants encoding the same protein have been found for these genes.<br>[provided by RefSeq, Oct 2011] |

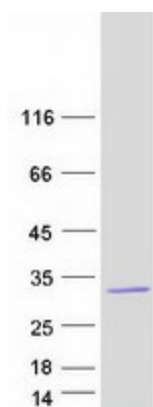
## Product images:



Circular map for RC225273



Western blot validation of overexpression lysate (Cat# [LY427250]) using anti-DDK antibody (Cat# [TA50011-100]). Left: Cell lysates from untransfected HEK293T cells; Right: Cell lysates from HEK293T cells transfected with RC225273 using transfection reagent MegaTran 2.0 (Cat# [TT210002]).



Coomassie blue staining of purified STYX protein (Cat# [TP325273]). The protein was produced from HEK293T cells transfected with STYX cDNA clone (Cat# RC225273) using MegaTran 2.0 (Cat# [TT210002]).