

Product datasheet for **RC225272**

FAM164B (ZC2HC1B) (NM_001013623) Human Tagged ORF Clone

Product data:

Product Type:	Expression Plasmids
Product Name:	FAM164B (ZC2HC1B) (NM_001013623) Human Tagged ORF Clone
Tag:	Myc-DDK
Symbol:	FAM164B
Synonyms:	C6orf94; dj468K18.5; FAM164B
Mammalian Cell Selection:	Neomycin
Vector:	pCMV6-Entry (PS100001)
E. coli Selection:	Kanamycin (25 ug/mL)
ORF Nucleotide Sequence:	>RC225272 representing NM_001013623 Red=Cloning site Blue=ORF Green=Tags(s)

TTTTGTAATACGACTCACTATAGGGCGGCCGGAATTCGTCGACTGGATCCGGTACCGAGGAGATCTGCC
GCC**CGATCGCC**

ATGGCTGGGGCAGAACCATTTTTGGCAGATGGCAATCAGGAATTGTTCCCTGTGAAGTCTGTGGAAGAC
GTTTTGCAGCAGATGTTCTGAAAGGCATGGACCAATATGTAAGAACTTTCAACAGAAAGCGTAAACC
TTTCAGTTCTTTGAAGCAAAGATTACAGGGCACTGACATTCCTACTGTGAAGAAGACTCCACAATCCAAG
TCTCCACCTGTGAGGAAGTCTAACTGGAGACAACAACATGAAGACTTTATTAATGCAATCCGATCAGCAA
AGCAGTGTATGCTAGCCATTAAGAAGGCCACCCTCCACCTCCACCCCTCCATCCTGAACCCAGA
TTATATCAACGTCCATATTGTATGAGAAGGTTTAATGAAAGCGCAGCTGAGCGACATACTAATTTCTGC
AAGGATCAGTCTTCTCGCCGAGTCTTTAATCCAGCTCAGACAGCAGCAAATTGGCATCCAGAGCTCAGG
GTAGGGCTCAGATGGGTCCAAAAAAGAACCAACTGTTACCAGTGTGTGGGAGCTTTGCTGCAGAACAG
GGTCTGGTGGCCACGAATGAAGTCCCAACCAAGTCAGGATTAGCTATGGACCCTGCTTCTGGAGCAAAA
CTCAGACAAGGATTTAGTAAATCTTCTAAAAAAGAT

ACGCGTACGCGGGCCGCTCGAGCAGAACTCATCTCAGAAGAGGATCTGGCAGCAAATGATATCCTGGATT
ACAAGGATGACGACGATAAGGTTTAA



[View online »](#)

Protein Sequence: >RC225272 representing NM_001013623
Red=Cloning site Green=Tags(s)

MAGAEPLADGNQELFPCEVCGRRFAADVLERHGPICKKLFNRKRKPFSSLKQRLQGTDIPTVKKTPQSK
 SPPVYRKSNNWRQQHEDFINAIRSAKQCMLAIKEGRPLPPPPPSLNPDIYIQRPYCMRRFNSAAERHTNFC
 KDQSSRRVFNPAQTAAKLASRAQGRAQMGPKKEPTVTSAVGALLQNRVLVATNEVPTKSGLAMDPASGAK
 LRQGFSSKSSKKD

TRTRPLEQKLISEEDLAANDILDYKDDDDKV

Chromatograms: https://cdn.origene.com/chromatograms/ja1262_h07.zip

Restriction Sites: SgfI-MluI

Cloning Scheme:



ACCN: NM_001013623

ORF Size: 666 bp

OTI Disclaimer: The molecular sequence of this clone aligns with the gene accession number as a point of reference only. However, individual transcript sequences of the same gene can differ through naturally occurring variations (e.g. polymorphisms), each with its own valid existence. This clone is substantially in agreement with the reference, but a complete review of all prevailing variants is recommended prior to use. [More info](#)

OTI Annotation: This clone was engineered to express the complete ORF with an expression tag. Expression varies depending on the nature of the gene.

Components: The ORF clone is ion-exchange column purified and shipped in a 2D barcoded Matrix tube containing 10ug of transfection-ready, dried plasmid DNA (reconstitute with 100 ul of water).

Reconstitution Method:

1. Centrifuge at 5,000xg for 5min.
2. Carefully open the tube and add 100ul of sterile water to dissolve the DNA.
3. Close the tube and incubate for 10 minutes at room temperature.
4. Briefly vortex the tube and then do a quick spin (less than 5000xg) to concentrate the liquid at the bottom.
5. Store the suspended plasmid at -20°C. The DNA is stable for at least one year from date of shipping when stored at -20°C.

RefSeq: [NM_001013623.3](#)

RefSeq ORF: 669 bp

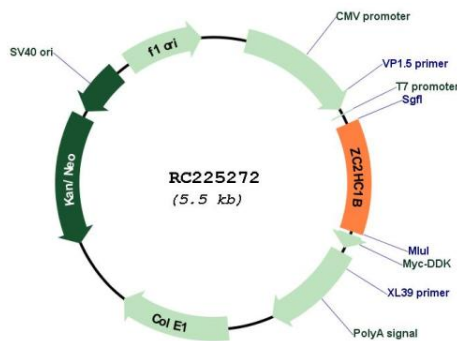
Locus ID: 153918

UniProt ID: [Q5TFG8](#)

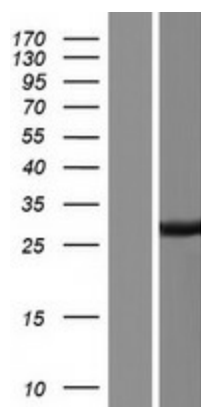
Cytogenetics: 6q24.2

MW: 24.5 kDa

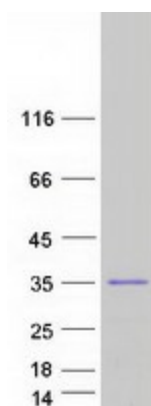
Product images:



Circular map for RC225272



Western blot validation of overexpression lysate (Cat# [LY425352]) using anti-DDK antibody (Cat# [TA50011-100]). Left: Cell lysates from untransfected HEK293T cells; Right: Cell lysates from HEK293T cells transfected with RC225272 using transfection reagent MegaTran 2.0 (Cat# [TT210002]).



Coomassie blue staining of purified ZC2HC1B protein (Cat# [TP325272]). The protein was produced from HEK293T cells transfected with ZC2HC1B cDNA clone (Cat# RC225272) using MegaTran 2.0 (Cat# [TT210002]).