

## Product datasheet for **RC225264**

### FKBP7 (NM\_001135212) Human Tagged ORF Clone

#### Product data:

**Product Type:** Expression Plasmids  
**Product Name:** FKBP7 (NM\_001135212) Human Tagged ORF Clone  
**Tag:** Myc-DDK  
**Symbol:** FKBP7  
**Synonyms:** FKBP23; PPlase  
**Mammalian Cell Selection:** Neomycin  
**Vector:** pCMV6-Entry (PS100001)  
**E. coli Selection:** Kanamycin (25 ug/mL)  
**ORF Nucleotide Sequence:** >RC225264 representing NM\_001135212  
**Red=Cloning site Blue=ORF Green=Tags(s)**

TTTTGTAATACGACTCACTATAGGGCGGCCGGAATTCGTCGACTGGATCCGGTACCGAGGAGATCTGCC  
GCC**CGATCGCC**

ATGCCAAAACCATGCATTTCTTATTCAGATTCATTGTTTTCTTTATCTGTGGGCCTTTTTACTGCTC  
AGAGACAAAAGAAAGAGGAGAGCACCGAAGAAGTGAAAATAGAAGTTTTGCATCGTCCAGAAAACCTGCTC  
TAAGACAAGCAAGAAGGGAGACCTACTAAATGCCATTATGACGGCTACCTGGCTAAAGACGGCTCGAAA  
TTCTACTGCAGCCGGACACAAAATGAAGGCCACCCAAATGGTTTGTCTTGGTGTGGCAAGTCATAA  
AAGGCCTAGACATTGCTATGACAGATATGTGCCCTGGAGAAAAGCGAAAAGTAGTTATACCCCTTCATT  
TGCATACGGAAAAGGAAGGCTATGAAGGCAAGATTCACCGGATGCTACATTGATTTTTGAGATTGAACTT  
TATGCTGTGACCAAAGGACCACGGAGCATTGAGACATTTAAACAAATAGACATGGACAATGACAGGCAGC  
TCTCTAAAGCCGAGATAAACCTCTACTTGCAAAGGGAATTTGAAAAGATGAGAAGCCACGTGACAAGTC  
ATATCAGGATGCAGTTTTAGAAGATTTTTAAGAAGAATGACCATGATGGTGTGGCTTCATTTCTCCC  
AAGGAATACAATGTATACCAACACGATGAACTA

**ACGCGT**ACGCGGCCGCTCGAGCAGAACTCATCTCAGAAGAGGATCTGGCAGCAAATGATATCCTGGATT  
ACAAGGATGACGACGATAAGGTTTAA



[View online »](#)

**Protein Sequence:** >RC225264 representing NM\_001135212  
Red=Cloning site Green=Tags(s)

MPKTMHFLFRFIVFFYLWGLFTAQRQKKEESTEEVKIEVLHRPENCSKTSKKGDLLNAHYDGYLAKDGSK  
 FYCSRTQNEGHPKWFVLGVGQVIKGLDIAMTDMCPGKRRKVVIPPSFAYGKEGYEGKIPPDATLIFEIEL  
 YAVTKGPRSIETFQKIDMDNDRQLSKAEINLYLQREFEKDEKPRDKSYQDAVLEDFKKNDDHGDGDFISP  
 KEYNVVYQHDEL

TRTRPLEQKLISEEDLAANDILDYKDDDDKV

**Chromatograms:** [https://cdn.origene.com/chromatograms/ja1503\\_a11.zip](https://cdn.origene.com/chromatograms/ja1503_a11.zip)

**Restriction Sites:** SgfI-MluI

**Cloning Scheme:**



**ACCN:** NM\_001135212

**ORF Size:** 663 bp

**OTI Disclaimer:** The molecular sequence of this clone aligns with the gene accession number as a point of reference only. However, individual transcript sequences of the same gene can differ through naturally occurring variations (e.g. polymorphisms), each with its own valid existence. This clone is substantially in agreement with the reference, but a complete review of all prevailing variants is recommended prior to use. [More info](#)

**OTI Annotation:** This clone was engineered to express the complete ORF with an expression tag. Expression varies depending on the nature of the gene.

**Components:** The ORF clone is ion-exchange column purified and shipped in a 2D barcoded Matrix tube containing 10ug of transfection-ready, dried plasmid DNA (reconstitute with 100 ul of water).

**Reconstitution Method:**

1. Centrifuge at 5,000xg for 5min.
2. Carefully open the tube and add 100ul of sterile water to dissolve the DNA.
3. Close the tube and incubate for 10 minutes at room temperature.
4. Briefly vortex the tube and then do a quick spin (less than 5000xg) to concentrate the liquid at the bottom.
5. Store the suspended plasmid at -20°C. The DNA is stable for at least one year from date of shipping when stored at -20°C.

**RefSeq:** [NM\\_001135212.2](#)

**RefSeq ORF:** 666 bp

**Locus ID:** 51661

**UniProt ID:** [Q9Y680](#)

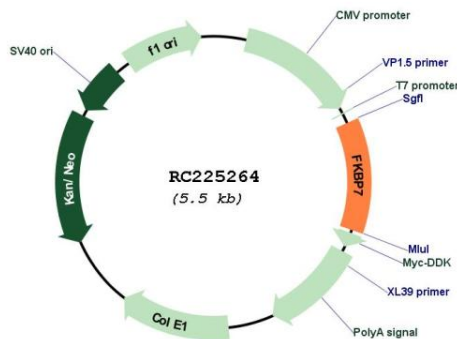
**Cytogenetics:** 2q31.2

**Protein Families:** Druggable Genome, Transmembrane

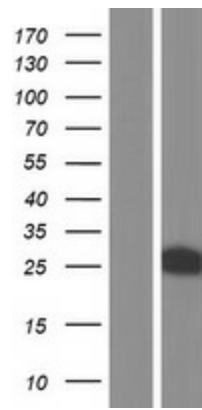
**MW:** 25.72 kDa

**Gene Summary:** The protein encoded by this gene belongs to the FKBP-type peptidyl-prolyl cis/trans isomerase (PPIase) family. Members of this family exhibit PPIase activity and function as molecular chaperones. A similar protein in mouse is located in the endoplasmic reticulum and binds calcium. [provided by RefSeq, Jul 2008]

## Product images:



Circular map for RC225264



Western blot validation of overexpression lysate (Cat# [LY427593]) using anti-DDK antibody (Cat# [TA50011-100]). Left: Cell lysates from untransfected HEK293T cells; Right: Cell lysates from HEK293T cells transfected with RC225264 using transfection reagent MegaTran 2.0 (Cat# [TT210002]).