

## Product datasheet for **RC225261**

### **SYCE2 (NM\_001105578) Human Tagged ORF Clone**

#### Product data:

**Product Type:** Expression Plasmids  
**Product Name:** SYCE2 (NM\_001105578) Human Tagged ORF Clone  
**Tag:** Myc-DDK  
**Symbol:** SYCE2  
**Synonyms:** CESC1  
**Mammalian Cell Selection:** Neomycin  
**Vector:** pCMV6-Entry (PS100001)  
**E. coli Selection:** Kanamycin (25 ug/mL)  
**ORF Nucleotide Sequence:** >RC225261 representing NM\_001105578  
**Red=Cloning site Blue=ORF Green=Tags(s)**

TTTTGTAATACGACTCACTATAGGGCGGCCGGAATTCGTCGACTGGATCCGGTACCGAGGAGATCTGCC  
GCC**CGATCGCC**

ATGGAGCGACAGGGAGTGGACGTGCCCCATGTGAAATGCAAAGACCAGGAACCGCAGCCCTTGGGGGAGA  
GCAAGGAGCATCCGCGGTGGGAAGAGAAGCTGCGAGGAGGAAGCTGGTGGAGGGCCAGCTAGTGCCAGTTG  
CCAGCTGACGGTCCTGGAAGGGAAGTCGGGACTCTACTTCTCTCTCTGGACTCAAGCATTGACATCCTG  
CAGAAGAGAGCCCAGGAGCTGATCGAAAACATCAACAAGAGCCGGCAAAGGACCATGCACTCATGACCA  
ACTTCAGGAACAGCCTGAAGACCAAGGTTTCGGATCTGACAGAGAAATTAGAGGAGAGGATCTATCAGAT  
TTATAATGACCACAACAAGATCATCCAGGAAAAGCTCAAAGAGTTCACCCAGAAAATGGCAAAGATCAGC  
CATTTGGAGACAGAGCTCAAACAAGTCTGCCACAGCGTGGAGACTGTGTACAAAGACCTGTGTCTCCAGC  
CTGAGCAGAGCCTAAGACTCAGATGGGGGCCAGACCCTCTAGGGGAAAGTCCCCACCACGTCCCGGCAA  
CTCACAGCCCCCAGAGCTGTTTCGTTTCTTCTGTGGCTGAAACTACTTCTCAGGCCACTGCTTCAGAAGTA  
CAGACCAACAGAGATGGTGAATGC

**ACGCGT**ACGCGGGCCGCTCGAGCAGAAACTCATCTCAGAAGAGGATCTGGCAGCAAATGATATCCTGGATT  
ACAAGGATGACGACGATAAGGTTTAA



[View online »](#)

**Protein Sequence:** >RC225261 representing NM\_001105578

Red=Cloning site Green=Tags(s)

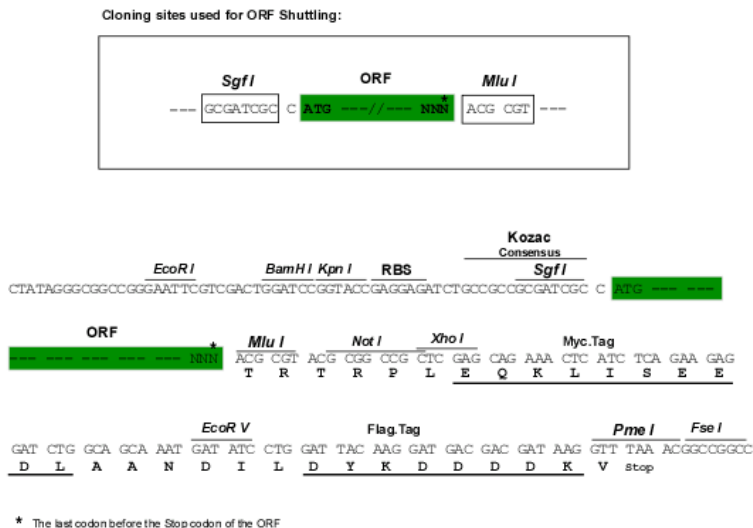
MERQGVDPVPHVKCKDQEPQPLGESKEHPRWEENCEEEAGGGPASASCQLTVLEGKSGLYFSSLDSSIDIL  
QKRAQELIENINKSRQKDHALMTNFRNSLKTkVSDLTEKLEERIYQIYNDHNKIIQEKLQFTQKMAKIS  
HLETQKQVCHSVETVYKDLCLQPEQSLRLRWGPDHSRGKSPRPNGNSQPPDFVSVVAETTSQATASEV  
QTNRDGEK

TRTRPLEQKLISEEDLAANDILDYKDDDDKV

**Chromatograms:** [https://cdn.origene.com/chromatograms/mk8033\\_c01.zip](https://cdn.origene.com/chromatograms/mk8033_c01.zip)

**Restriction Sites:** SgfI-MluI

**Cloning Scheme:**



**ACCN:** NM\_001105578

**ORF Size:** 654 bp

**OTI Disclaimer:** The molecular sequence of this clone aligns with the gene accession number as a point of reference only. However, individual transcript sequences of the same gene can differ through naturally occurring variations (e.g. polymorphisms), each with its own valid existence. This clone is substantially in agreement with the reference, but a complete review of all prevailing variants is recommended prior to use. [More info](#)

**OTI Annotation:** This clone was engineered to express the complete ORF with an expression tag. Expression varies depending on the nature of the gene.

**Components:** The ORF clone is ion-exchange column purified and shipped in a 2D barcoded Matrix tube containing 10ug of transfection-ready, dried plasmid DNA (reconstitute with 100 ul of water).

**Reconstitution Method:**

1. Centrifuge at 5,000xg for 5min.
2. Carefully open the tube and add 100ul of sterile water to dissolve the DNA.
3. Close the tube and incubate for 10 minutes at room temperature.
4. Briefly vortex the tube and then do a quick spin (less than 5000xg) to concentrate the liquid at the bottom.
5. Store the suspended plasmid at -20°C. The DNA is stable for at least one year from date of shipping when stored at -20°C.

**RefSeq:** [NM\\_001105578.2](#)

**RefSeq ORF:** 657 bp

**Locus ID:** 256126

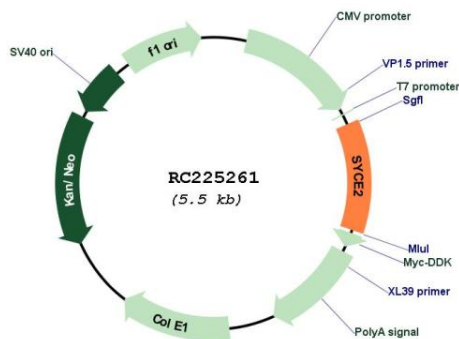
**UniProt ID:** [Q6PIF2](#)

**Cytogenetics:** 19p13.13

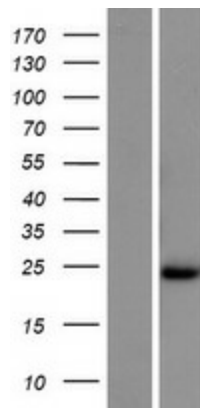
**MW:** 24.5 kDa

**Gene Summary:** The protein encoded by this gene is part of the synaptonemal complex formed between homologous chromosomes during meiotic prophase. The encoded protein associates with SYCP1 and SYCE1 and is found only where chromosome cores are synapsed. [provided by RefSeq, Dec 2012]

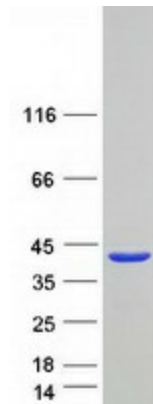
**Product images:**



Circular map for RC225261



Western blot validation of overexpression lysate (Cat# [LY426288]) using anti-DDK antibody (Cat# [TA50011-100]). Left: Cell lysates from untransfected HEK293T cells; Right: Cell lysates from HEK293T cells transfected with RC225261 using transfection reagent MegaTran 2.0 (Cat# [TT210002]).



Coomassie blue staining of purified SYCE2 protein (Cat# [TP325261]). The protein was produced from HEK293T cells transfected with SYCE2 cDNA clone (Cat# RC225261) using MegaTran 2.0 (Cat# [TT210002]).