

## Product datasheet for **RC225258**

### NACA (NM\_001113201) Human Tagged ORF Clone

#### Product data:

**Product Type:** Expression Plasmids  
**Product Name:** NACA (NM\_001113201) Human Tagged ORF Clone  
**Tag:** Myc-DDK  
**Symbol:** NACA  
**Synonyms:** HSD48; NAC-alpha; NACA1; skNAC  
**Mammalian Cell Selection:** Neomycin  
**Vector:** pCMV6-Entry (PS100001)  
**E. coli Selection:** Kanamycin (25 ug/mL)  
**ORF Nucleotide Sequence:** >RC225258 representing NM\_001113201  
Red=Cloning site Blue=ORF Green=Tags(s)

TTTTGTAATACGACTCACTATAGGGCGGCCGGAATTCGTCGACTGGATCCGGTACCGAGGAGATCTGCC  
GCC**CGATCGCC**

ATGCCCGGCGAAGCCACAGAAACCGTCCCTGCTACAGAGCAGGAGTTGCCGCAGCCCCAGGCTGAGACAG  
GGTCTGGAACAGAATCTGACAGTGATGAATCAGTACCAGAGCTTGAAGAACAGGATTCACCCAGGCAAC  
CACACAACAAGCCAGCTGGCGGCAGCAGCTGAAATTGATGAAGAACCAGTCAGTAAAGCAAACAGAGT  
CGGAGTAAAAGAAGGCACGGAAGGCTATGTCCAACTGGGTCTTCGGCAGGTTACAGGAGTTACTAGAG  
TCACTATCCGGAATCTAAGAATATCCTCTTTGTCATCACAAAACCAGATGTCTACAAGAGCCCTGCTTC  
AGATACTTACATAGTTTTTGGGGAAGCCAAGATCGAAGATTTATCCAGCAAGCACAACAGCAGCTGCT  
GAGAAATTCAAAGTTCAAGGTGAAGCTGTCTCAAACATTCAAGAAAACACACAGACTCCAAGTGTACAAG  
AGGAGAGTGAAGAGGAAGAGGTGATGAAACAGGTGTAGAAGTTAAGGACATTGAATTGGTCATGTCACA  
AGCAAATGTGTGCGAGAGCAAAGGCAGTCCGAGCCCTGAAGAACAACAGTAATGATATTGTAATGCGATT  
ATGGAATTAACAATG

**ACGCGT**ACGCGGCGCTCGAGCAGAACTCATCTCAGAAGAGGATCTGGCAGCAAATGATATCCTGGATT  
ACAAGGATGACGACGATAAGGTTTAA



[View online »](#)

**Protein Sequence:** >RC225258 representing NM\_001113201  
 Red=Cloning site Green=Tags(s)

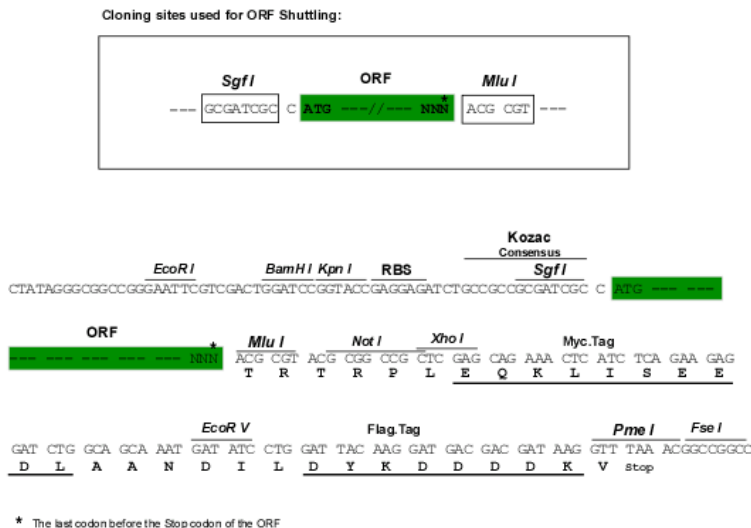
MPGEATETVPATEQELPQPQAETGSGTESDSDESVPLEEQDSTQATTQQAQLAAAAEIDEEPVSKAKQS  
 RSEKKARKAMSKLGLRQVTGVTRVTRIRKSKNILFVITKPDVYKSPASDTYIVFGEAKIEDLSQQAQLAAA  
 EKFKVQGEAVSNIQENTQTPTVQEESEEEEEVDETGVEVKDIELVMSQANVSRAKAVRALKNNNSNDIVNAI  
 MELTM

TRTRPLEQKLISEEDLAANDILDYKDDDDKV

**Chromatograms:** [https://cdn.origene.com/chromatograms/mk6369\\_b01.zip](https://cdn.origene.com/chromatograms/mk6369_b01.zip)

**Restriction Sites:** SgfI-MluI

**Cloning Scheme:**



**ACCN:** NM\_001113201

**ORF Size:** 645 bp

**OTI Disclaimer:** The molecular sequence of this clone aligns with the gene accession number as a point of reference only. However, individual transcript sequences of the same gene can differ through naturally occurring variations (e.g. polymorphisms), each with its own valid existence. This clone is substantially in agreement with the reference, but a complete review of all prevailing variants is recommended prior to use. [More info](#)

**OTI Annotation:** This clone was engineered to express the complete ORF with an expression tag. Expression varies depending on the nature of the gene.

**Components:** The ORF clone is ion-exchange column purified and shipped in a 2D barcoded Matrix tube containing 10ug of transfection-ready, dried plasmid DNA (reconstitute with 100 ul of water).

**Reconstitution Method:**

1. Centrifuge at 5,000xg for 5min.
2. Carefully open the tube and add 100ul of sterile water to dissolve the DNA.
3. Close the tube and incubate for 10 minutes at room temperature.
4. Briefly vortex the tube and then do a quick spin (less than 5000xg) to concentrate the liquid at the bottom.
5. Store the suspended plasmid at -20°C. The DNA is stable for at least one year from date of shipping when stored at -20°C.

**RefSeq:** [NM\\_001113201.3](#)

**RefSeq ORF:** 648 bp

**Locus ID:** 4666

**UniProt ID:** [Q13765](#)

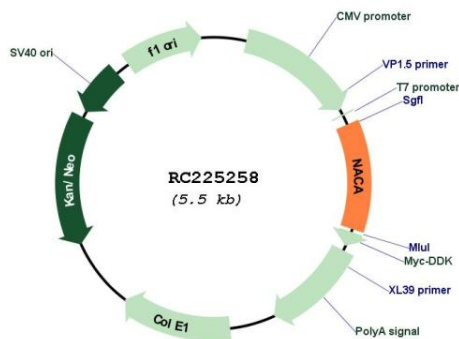
**Cytogenetics:** 12q13.3

**Protein Families:** Druggable Genome, Transcription Factors

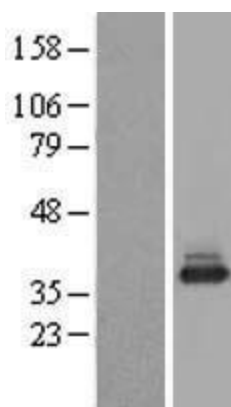
**MW:** 23.2 kDa

**Gene Summary:** This gene encodes a protein that associates with basic transcription factor 3 (BTF3) to form the nascent polypeptide-associated complex (NAC). This complex binds to nascent proteins that lack a signal peptide motif as they emerge from the ribosome, blocking interaction with the signal recognition particle (SRP) and preventing mistranslocation to the endoplasmic reticulum. This protein is an IgE autoantigen in atopic dermatitis patients. Alternative splicing results in multiple transcript variants, but the full length nature of some of these variants, including those encoding very large proteins, has not been determined. There are multiple pseudogenes of this gene on different chromosomes. [provided by RefSeq, Feb 2016]

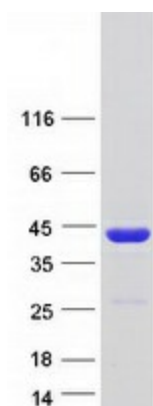
### Product images:



Circular map for RC225258



Western blot validation of overexpression lysate (Cat# [LY426388]) using anti-DDK antibody (Cat# [TA50011-100]). Left: Cell lysates from untransfected HEK293T cells; Right: Cell lysates from HEK293T cells transfected with RC225258 using transfection reagent MegaTran 2.0 (Cat# [TT210002]).



Coomassie blue staining of purified NACA protein (Cat# [TP325258]). The protein was produced from HEK293T cells transfected with NACA cDNA clone (Cat# RC225258) using MegaTran 2.0 (Cat# [TT210002]).