

Product datasheet for **RC225256**

p53 (TP53) (NM_001126117) Human Tagged ORF Clone

Product data:

Product Type: Expression Plasmids
Product Name: p53 (TP53) (NM_001126117) Human Tagged ORF Clone
Tag: Myc-DDK
Symbol: TP53
Synonyms: BCC7; BMFS5; LFS1; P53; TRP53
Vector: pCMV6-Entry (PS100001)
E. coli Selection: Kanamycin (25 ug/mL)
Cell Selection: Neomycin
ORF Nucleotide Sequence: >RC225256 representing NM_001126117
Red=Cloning site Blue=ORF Green=Tags(s)

TTTTGTAATACGACTCACTATAGGGCGCCGGAATTCGTCGACTGGATCCGGTACCGAGGAGATCTGCC
GCC**CGATCGCC**

ATGTTTTGCCAACTGGCCAAGACCTGCCCTGTGCAGCTGTGGTTGATTCCACACCCCGCCGGCACCC
GCGTCCGCGCCATGGCCATCTACAAGCAGTCACAGCACATGACGGAGTTGTGAGGCGCTGCCCCACCA
TGAGCGCTGCTCAGATAGCGATGGTCTGGCCCTCCTCAGCATCTATCCGAGTGAAGAAATTTGCGT
GTGGAGTATTTGGATGACAGAAACACTTTTCGACATAGTGTGGTGGTGCCTATGAGCCGCTGAGGTTG
GCTCTGACTGTACCACCATCCACTACAACACTACATGTGTAACAGTTCCTGCATGGGCGCATGAACCGGAG
GCCCATCCTACCATCATCACACTGGAAGACTCCAGTGGTAATCTACTGGGACGGAACAGCTTTGAGGTG
CGTGTGTTGTGCCTGTCTGGGAGAGACCGGCGCACAGAGGAAGAGAATCTCCGCAAGAAAGGGGAGCCTC
ACCACGAGCTGCCCCAGGGAGCACTAAGCGAGCACTGCCAACAACACCAGCTCCTCTCCCCAGCCAAA
GAAGAAACCACTGGATGGAGAATATTTACCCTTCAGATGCTACTTGACTTACGATGGTGTACTTCCTG
ATAAACTCGTCG

ACGCGTACGCGGCGCTCGAGCAGAAACTCATCTCAGAAGAGGATCTGGCAGCAAATGATATCCTGGATT
ACAAGGATGACGACGATAAGGTTTAA



[View online »](#)

Protein Sequence: >RC225256 representing NM_001126117
 Red=Cloning site Green=Tags(s)

MFCQLAKTCPVQLWVDSTPPPGTRVRAMAIYKQSQHMTEVVRRCPPHHERCSDSDGLAPPQHLIRVEGNLR
 VEYLDDRNTFRHSVVVPYEPPEVGSDCITTIHYNMCMSSCMGGMNRRPILTIITLEDSSGNLLGRNSFEV
 RVCACPGRRRTEENLRKKKGEPHHELPPGSTKRALPNNTSSSPQPKKPLDGEYFTLQMLLDLRWCYFL
 INSS

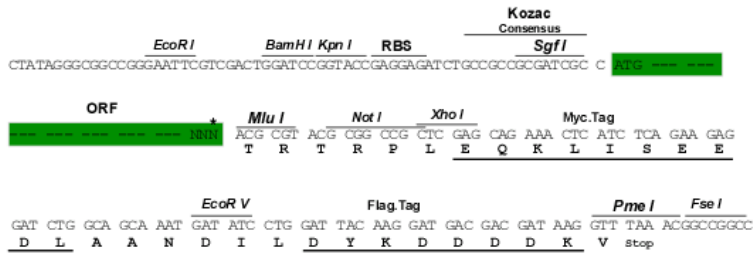
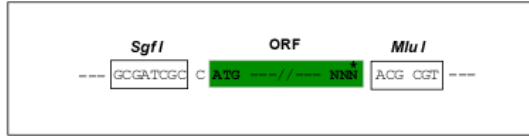
TRTRPLEQKLISEEDLAANDILDYKDDDDKV

Restriction Sites:

Sgfl-MluI

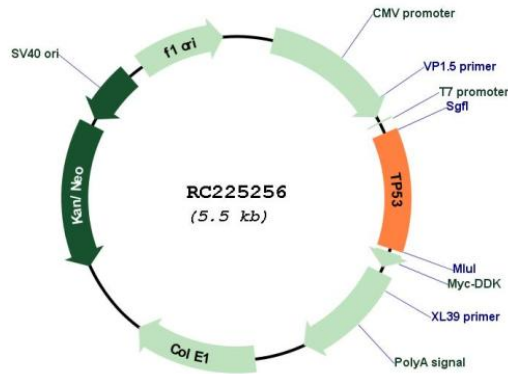
Cloning Scheme:

Cloning sites used for ORF Shuttling:



* The last codon before the Stop codon of the ORF

Plasmid Map:



ACCN: NM_001126117

ORF Size: 642 bp

OTI Disclaimer:	The molecular sequence of this clone aligns with the gene accession number as a point of reference only. However, individual transcript sequences of the same gene can differ through naturally occurring variations (e.g. polymorphisms), each with its own valid existence. This clone is substantially in agreement with the reference, but a complete review of all prevailing variants is recommended prior to use. More info
OTI Annotation:	This clone was engineered to express the complete ORF with an expression tag. Expression varies depending on the nature of the gene.
Components:	The ORF clone is ion-exchange column purified and shipped in a 2D barcoded Matrix tube containing 10ug of transfection-ready, dried plasmid DNA (reconstitute with 100 ul of water).
Reconstitution Method:	<ol style="list-style-type: none">1. Centrifuge at 5,000xg for 5min.2. Carefully open the tube and add 100ul of sterile water to dissolve the DNA.3. Close the tube and incubate for 10 minutes at room temperature.4. Briefly vortex the tube and then do a quick spin (less than 5000xg) to concentrate the liquid at the bottom.5. Store the suspended plasmid at -20°C. The DNA is stable for at least one year from date of shipping when stored at -20°C.
RefSeq:	NM_001126117.1 , NP_001119589.1
RefSeq ORF:	645 bp
Locus ID:	7157
UniProt ID:	P04637
Cytogenetics:	17p13.1
Protein Families:	Druggable Genome, Stem cell - Pluripotency, Transcription Factors
Protein Pathways:	Amyotrophic lateral sclerosis (ALS), Apoptosis, Basal cell carcinoma, Bladder cancer, Cell cycle, Chronic myeloid leukemia, Colorectal cancer, Endometrial cancer, Glioma, Huntington's disease, MAPK signaling pathway, Melanoma, Neurotrophin signaling pathway, Non-small cell lung cancer, p53 signaling pathway, Pancreatic cancer, Pathways in cancer, Prostate cancer, Small cell lung cancer, Thyroid cancer, Wnt signaling pathway
MW:	24.2 kDa
Gene Summary:	This gene encodes a tumor suppressor protein containing transcriptional activation, DNA binding, and oligomerization domains. The encoded protein responds to diverse cellular stresses to regulate expression of target genes, thereby inducing cell cycle arrest, apoptosis, senescence, DNA repair, or changes in metabolism. Mutations in this gene are associated with a variety of human cancers, including hereditary cancers such as Li-Fraumeni syndrome. Alternative splicing of this gene and the use of alternate promoters result in multiple transcript variants and isoforms. Additional isoforms have also been shown to result from the use of alternate translation initiation codons from identical transcript variants (PMIDs: 12032546, 20937277). [provided by RefSeq, Dec 2016]