

## Product datasheet for **RC225255**

### Pregnancy specific beta 1 glycoprotein 11 (PSG11) (NM\_001113410) Human Tagged ORF Clone

#### Product data:

Product Type:	Expression Plasmids
Product Name:	Pregnancy specific beta 1 glycoprotein 11 (PSG11) (NM_001113410) Human Tagged ORF Clone
Tag:	Myc-DDK
Symbol:	Pregnancy specific beta 1 glycoprotein 11
Synonyms:	PSBG-11; PSBG-13; PSG13; PSG14
Mammalian Cell Selection:	Neomycin
Vector:	pCMV6-Entry (PS100001)
E. coli Selection:	Kanamycin (25 ug/mL)
ORF Nucleotide Sequence:	>RC225255 ORF sequence Red=Cloning site Blue=ORF Green=Tags(s)

TTTTGTAATACGACTCACTATAGGGCGGCCGGAATTCGTCGACTGGATCCGGTACCGAGGAGATCTGCC  
GCC**CGATCGCC**

ATGCACGCAGCAGAGATCATGGGGCCCCTCTCAGCCCCTCCCTGCACAGAGCACATCAAATGGAAGGGGC  
TCCTGCTCACAGTGGAGACTCCAAGCCCTCCATCTCCAGCAGCAACTTAAACCCAGGGAGGCCATGGA  
GACTGTGATCTTAACCTGTAATCCTGAGACTCCGGACGCAAGCTACCTGTGGTGGATGAATGGTCAGAGC  
CTCCCTATGACTCATAGGATGCAGCTGTCTGAAACCAACAGGACCCTCTTCTATTTGGTGTCAAAAGT  
ATACTGCAGGACCCTATGAATGTGAAATATGGAAGTCAAGGAGTCCAGCCGAGTGACCCAGTCACCCCT  
GAATCTCCTCCATGGTCCAGACCTCCCCAGAATTTCCCTTCAGTCACCTTACTATTCAGGAGAGAAC  
CTCGACTTGTCTGCTTCGACAGCTCTAACCACAGCAGTATTCTTGACAATTAATGGGAAGTTTC  
AGCTATCAGGACAAAAGCTCTTTATCCCTCAAATTAAGCATAATGGGCTCTATGCTTGCTCTGC  
TCGTAAGTCAAGCACTGGCGAGGAAAGCTCCACATCCTTGACAATCAGAGTCATTGCTCCTCCAGGATTA  
GGAACCTTTGCTTTCAATAATCCAACG

**ACGCGT**ACGCGGCGCTCGAGCAGAACTCATCTCAGAAGAGGATCTGGCAGCAAATGATATCCTGGATT  
ACAAGGATGACGACGATAAGGTTTAA



[View online »](#)



**Reconstitution Method:**

1. Centrifuge at 5,000xg for 5min.
2. Carefully open the tube and add 100ul of sterile water to dissolve the DNA.
3. Close the tube and incubate for 10 minutes at room temperature.
4. Briefly vortex the tube and then do a quick spin (less than 5000xg) to concentrate the liquid at the bottom.
5. Store the suspended plasmid at -20°C. The DNA is stable for at least one year from date of shipping when stored at -20°C.

**RefSeq Size:** 1175 bp

**RefSeq ORF:** 642 bp

**Locus ID:** 5680

**UniProt ID:** [Q9UQ72](#)

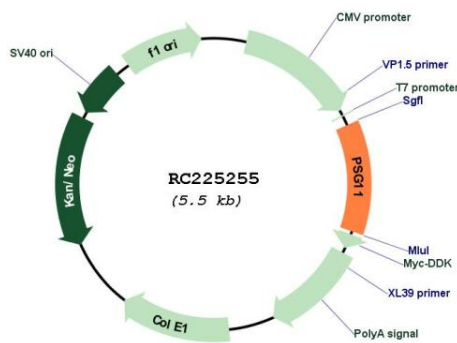
**Cytogenetics:** 19q13.31

**Protein Families:** Secreted Protein

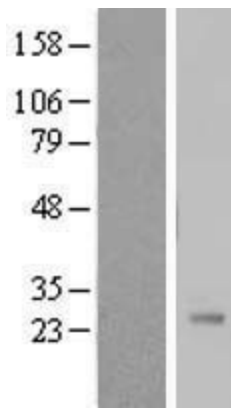
**MW:** 24 kDa

**Gene Summary:** The human pregnancy-specific glycoproteins (PSGs) are a group of molecules that are mainly produced by the placental syncytiotrophoblasts during pregnancy. PSGs comprise a subgroup of the carcinoembryonic antigen (CEA) family, which belongs to the immunoglobulin superfamily. For additional general information about the PSG gene family, see PSG1 (MIM 176390).[supplied by OMIM, Oct 2009]

**Product images:**



Circular map for RC225255



Western blot validation of overexpression lysate (Cat# [LY426411]) using anti-DDK antibody (Cat# [TA50011-100]). Left: Cell lysates from untransfected HEK293T cells; Right: Cell lysates from HEK293T cells transfected with RC225255 using transfection reagent MegaTran 2.0 (Cat# [TT210002]).