

Product datasheet for **RC225253**

MAD2L2 (NM_001127325) Human Tagged ORF Clone

Product data:

Product Type:	Expression Plasmids
Product Name:	MAD2L2 (NM_001127325) Human Tagged ORF Clone
Tag:	Myc-DDK
Symbol:	MAD2L2
Synonyms:	FANCV; MAD2B; POLZ2; REV7
Mammalian Cell Selection:	Neomycin
Vector:	pCMV6-Entry (PS100001)
E. coli Selection:	Kanamycin (25 ug/mL)
ORF Nucleotide Sequence:	>RC225253 ORF sequence Red=Cloning site Blue=ORF Green=Tags(s)

TTTTGTAATACGACTCACTATAGGGCGCCGGGAATTCGTCGACTGGATCCGGTACCGAGGAGATCTGCC
GCC**CGATCGCC**

ATGACCACGCTCACACGACAAGACCTCAACTTTGGCCAAGTGGTGGCCGATGTGCTCTGCGAGTTCCTGG
AGGTGGCTGTGCATCTCATCTCTACGTGCGCGAGGTCTACCCCGTGGGCATCTCCAGAAACGCAAGAA
GTACAACGTGCCGGTCCAGATGTCCTGCCACCCGGAGCTGAATCAGTATATCCAGGACACGCTGCACTGC
GTCAAGCCACTCCTGGAGAAGAATGATGTGGAGAAAGTGGTGGTGGTATTTGGATAAAGAGCACCGCC
CAGTGGAGAAATTCGTCTTTGAGATCACCCAGCCTCCACTGCTGTCCATCAGCTCAGACTCGCTGTTGTC
TCATGTGGAGCAGCTGCTCCGGGCTTCATCCTGAAGATCAGCGTGTGCGATGCCGTCTGGACCACAAC
CCCCCAGGCTGTACCTTCACAGTCTGGTGCACACGAGAGAAGCCGCCACTCGCAACATGGAGAAGATCC
AGGTCAACAAGGATTTCCCTGGATCCTGGCGGATGAGCAGGATGTCCACATGCATGACCCCCGGCTGAT
ACCCTAAAACCATGACGTCGGACATTTAAAGATGCAGCTTTACGTGGAAGAGCGCGCTCATAAAGGC
AGC

ACGCGTACGCGGGCCGCTCGAGCAGAACTCATCTCAGAAGAGGATCTGGCAGCAATGATATCCTGGATT
ACAAGGATGACGACGATAAGGTTTAA



[View online »](#)

Protein Sequence: >RC225253 protein sequence
 Red=Cloning site Green=Tags(s)

MTTLTRQDLNFGQVVADVLCFLELVAVHLILYVREYVPGIFQKRKKYNVPVQMSCHPELNQYIQDTLHC
 VKPLLEKNDVEKVVVVILDKHRPVEKFVFEITQPPLLSISSDSSL SHVEQLLRAFILKISVCDAVLDHN
 PPGCTFTVLVHTREAATRNMEDIQVIKDFPWILADEQDVHMHDPRLIPLKTMSTDILKMQLYVEERAHKG
 S

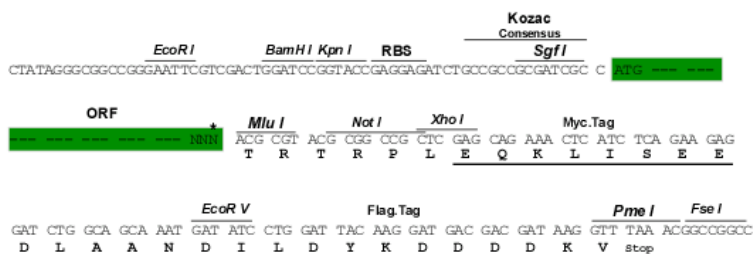
TRTRPLEQKLI SEEDLAANDILDYKDDDDKV

Chromatograms: https://cdn.origene.com/chromatograms/mk6012_e06.zip

Restriction Sites: SgfI-MluI

Cloning Scheme:

Cloning sites used for ORF Shuttling:



* The last codon before the Stop codon of the ORF

ACCN: NM_001127325

ORF Size: 633 bp

OTI Disclaimer: The molecular sequence of this clone aligns with the gene accession number as a point of reference only. However, individual transcript sequences of the same gene can differ through naturally occurring variations (e.g. polymorphisms), each with its own valid existence. This clone is substantially in agreement with the reference, but a complete review of all prevailing variants is recommended prior to use. [More info](#)

OTI Annotation: This clone was engineered to express the complete ORF with an expression tag. Expression varies depending on the nature of the gene.

Components: The ORF clone is ion-exchange column purified and shipped in a 2D barcoded Matrix tube containing 10ug of transfection-ready, dried plasmid DNA (reconstitute with 100 ul of water).

Reconstitution Method:

1. Centrifuge at 5,000xg for 5min.
2. Carefully open the tube and add 100ul of sterile water to dissolve the DNA.
3. Close the tube and incubate for 10 minutes at room temperature.
4. Briefly vortex the tube and then do a quick spin (less than 5000xg) to concentrate the liquid at the bottom.
5. Store the suspended plasmid at -20°C. The DNA is stable for at least one year from date of shipping when stored at -20°C.

RefSeq: [NM_001127325.1](#), [NP_001120797.1](#)

RefSeq Size: 1196 bp

RefSeq ORF: 636 bp

Locus ID: 10459

UniProt ID: [Q9UI95](#)

Cytogenetics: 1p36.22

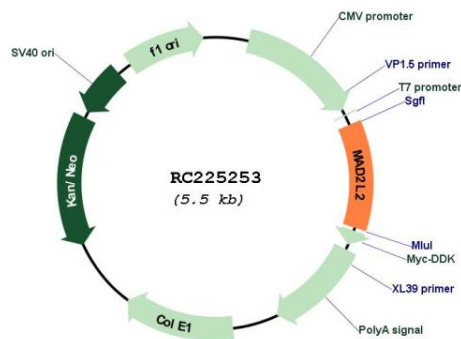
Protein Families: Druggable Genome

Protein Pathways: Cell cycle, Oocyte meiosis, Progesterone-mediated oocyte maturation

MW: 24.3 kDa

Gene Summary: The protein encoded by this gene is a component of the mitotic spindle assembly checkpoint that prevents the onset of anaphase until all chromosomes are properly aligned at the metaphase plate. The encoded protein, which is similar to MAD2L1, is capable of interacting with ADAM9, ADAM15, REV1, and REV3 proteins. [provided by RefSeq, Jul 2008]

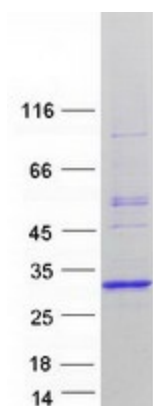
Product images:



Circular map for RC225253



Western blot validation of overexpression lysate (Cat# [LY426747]) using anti-DDK antibody (Cat# [TA50011-100]). Left: Cell lysates from untransfected HEK293T cells; Right: Cell lysates from HEK293T cells transfected with RC225253 using transfection reagent MegaTran 2.0 (Cat# [TT210002]).



Coomassie blue staining of purified MAD2L2 protein (Cat# [TP325253]). The protein was produced from HEK293T cells transfected with MAD2L2 cDNA clone (Cat# RC225253) using MegaTran 2.0 (Cat# [TT210002]).