

## Product datasheet for **RC225248**

### **RNASE9 (NM\_001110359) Human Tagged ORF Clone**

#### Product data:

**Product Type:** Expression Plasmids  
**Product Name:** RNASE9 (NM\_001110359) Human Tagged ORF Clone  
**Tag:** Myc-DDK  
**Symbol:** RNASE9  
**Synonyms:** h461; HEL128; RAK1  
**Mammalian Cell Selection:** Neomycin  
**Vector:** pCMV6-Entry (PS100001)  
**E. coli Selection:** Kanamycin (25 ug/mL)  
**ORF Nucleotide Sequence:** >RC225248 representing NM\_001110359  
 Red=Cloning site Blue=ORF Green=Tags(s)

TTTTGTAATACGACTCACTATAGGGCGGCCGGAATTCGTCGACTGGATCCGGTACCGAGGAGATCTGCC  
 GCC**CGATCGCC**

ATGTCTGCAGGAAAAATGATGAGAACTCTCATCCACACACCCACTGCCCTGCTTCTATTGCCGAGC  
 AGCTGCTGCAGCTGGTGCAGTTTCAAGAGGTGGATACAGATTTTGATTTCCAGAAGAAGATAAAAAAGA  
 AGAATTTGAAGAGTGTGGAAAAATTTTAGTACAGGGCCCGCCAGACCCTACCAAAGAAAAAGTC  
 AAAAGACGTGTCCTTATTGAACCTGGAATGCCACTAAATCATATAGAGTACTGTAACCATGAAATCATGG  
 GAAAAATGTTTACTACAAACACCGTTGGGTGGCAGAACATTACTCCTTCTTATGCAATATGACGAGCT  
 CCAAAAAATCTGTTACAACAGATTTGTGCCATGTAAGAATGGAATTAGGAAATGTAAACAGGAGCAAAGGT  
 CTTGTAGAAGGAGTGTATTGTAATTTAACAGAAGCATTGAAATACCAGCGTGTAAATACGAATCACTTT  
 ATAGGAAGGGCTACGTCCTTATCACTTGTTCATGGCAAAATGAAATGCAAAAACGTATTCCTCATACTAT  
 AAATGATCTCGTGGAGCCACCTGAACACAGAAGTTTCTCAGTGAGGATGGTGTCTTTGTATATCGCCC

**ACGCGT**ACGCGGCCGCTCGAGCAGAACTCATCTCAGAAGAGGATCTGGCAGCAAATGATATCCTGGATT  
 ACAAGGATGACGACGATAAGGTTTAA

**Protein Sequence:** >RC225248 representing NM\_001110359  
 Red=Cloning site Green=Tags(s)

MSAGKMMRTLITTHPLLLLLPQQLQLVQFQEVDTDFDFPEEDKKEEFEECLEKFFSTGPARPPTKEKV  
 KRRVLIIEPGMPLNHIIEYCNHEIMGKNVYKHRWVAEHYFLLMQYDELQKICYNRFVPCKNIRKCNRSKG  
 LVEGVYCNLTEAFEIPACKYESLYRKGVYLITCSWQNMQKRIPTHINDLVEPPEHRSFLEDGTVFVISP

**TRTRPLEQKLI**SEEDLAANDILDYKDDDDKV



[View online »](#)

**Chromatograms:** [https://cdn.origene.com/chromatograms/mk8006\\_a09.zip](https://cdn.origene.com/chromatograms/mk8006_a09.zip)

**Restriction Sites:** SgfI-MluI

**Cloning Scheme:**



**ACCN:** NM\_001110359

**ORF Size:** 630 bp

**OTI Disclaimer:** The molecular sequence of this clone aligns with the gene accession number as a point of reference only. However, individual transcript sequences of the same gene can differ through naturally occurring variations (e.g. polymorphisms), each with its own valid existence. This clone is substantially in agreement with the reference, but a complete review of all prevailing variants is recommended prior to use. [More info](#)

**OTI Annotation:** This clone was engineered to express the complete ORF with an expression tag. Expression varies depending on the nature of the gene.

**Components:** The ORF clone is ion-exchange column purified and shipped in a 2D barcoded Matrix tube containing 10ug of transfection-ready, dried plasmid DNA (reconstitute with 100 ul of water).

**Reconstitution Method:**

1. Centrifuge at 5,000xg for 5min.
2. Carefully open the tube and add 100ul of sterile water to dissolve the DNA.
3. Close the tube and incubate for 10 minutes at room temperature.
4. Briefly vortex the tube and then do a quick spin (less than 5000xg) to concentrate the liquid at the bottom.
5. Store the suspended plasmid at -20°C. The DNA is stable for at least one year from date of shipping when stored at -20°C.

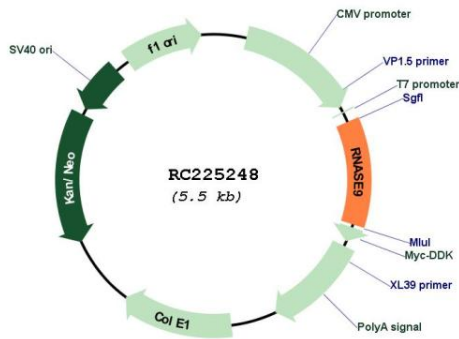
**RefSeq:** [NM\\_001110359.1](#), [NP\\_001103829.1](#)

**RefSeq ORF:** 633 bp

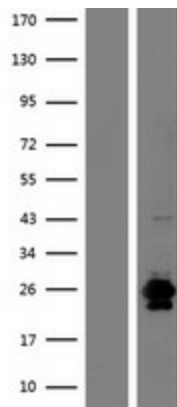
**Locus ID:** 390443

**UniProt ID:** [P60153](#)

**Cytogenetics:** 14q11.2  
**Protein Families:** Secreted Protein  
**MW:** 24.6 kDa  
**Gene Summary:** Does not exhibit any ribonuclease activity.[UniProtKB/Swiss-Prot Function]

**Product images:**


Circular map for RC225248



Western blot validation of overexpression lysate (Cat# [LY426323]) using anti-DDK antibody (Cat# [TA50011-100]). Left: Cell lysates from untransfected HEK293T cells; Right: Cell lysates from HEK293T cells transfected with RC225248 using transfection reagent MegaTran 2.0 (Cat# [TT210002]).