

Product datasheet for **RC225244**

RNASE9 (NM_001110360) Human Tagged ORF Clone

Product data:

Product Type: Expression Plasmids
Product Name: RNASE9 (NM_001110360) Human Tagged ORF Clone
Tag: Myc-DDK
Symbol: RNASE9
Synonyms: h461; HEL128; RAK1
Mammalian Cell Selection: Neomycin
Vector: pCMV6-Entry (PS100001)
E. coli Selection: Kanamycin (25 ug/mL)
ORF Nucleotide Sequence: >RC225244 representing NM_001110360
 Red=Cloning site Blue=ORF Green=Tags(s)

TTTTGTAATACGACTCACTATAGGGCGGCCGGAATTCGTCGACTGGATCCGGTACCGAGGAGATCTGCC
 GCC**CGATCGCC**

ATGTCTGCAGGAAAAATGATGAGAACTCTCATCCACACACCCACTGCCCTGCTTCTATTGCCGAGC
 AGCTGCTGCAGCTGGTGCAGTTTCAAGAGGTGGATACAGATTTTGATTTCCAGAAGAAGATAAAAAAGA
 AGAATTTGAAGAGTGTGGAAAAATTTTGTAGTACAGGGCCCGCAGACCCTACCAAAGAAAAAGTC
 AAAAGACGTGTCCTTATTGAACCTGGAATGCCACTAAATCATATAGAGTACTGTAACCATGAAATCATGG
 GAAAAATGTTTACTACAAACACCGTTGGGTGGCAGAACATTACTCCTTCTTATGCAATATGACGAGCT
 CCAAAAAATCTGTTACAACAGATTTGTGCCATGTAAGAATGGAATTAGGAAATGTAAACAGGAGCAAAGGT
 CTTGTAGAAGGAGTGTATTGTAATTTAACAGAAGCATTGAAATACCAGCGTGTAAATACGAATCACTTT
 ATAGGAAGGGCTACGTCCTTATCACTTGTTCATGGCAAAATGAAATGCAAAAACGTATTCCTCATACTAT
 AAATGATCTCGTGGAGCCACCTGAACACAGAAGTTTCTCAGTGAGGATGGTGTCTTTGTATATCGCCC

ACGCGTACGCGGCCGCTCGAGCAGAACTCATCTCAGAAGAGGATCTGGCAGCAAATGATATCCTGGATT
 ACAAGGATGACGACGATAAGGTTTAA

Protein Sequence: >RC225244 representing NM_001110360
 Red=Cloning site Green=Tags(s)

MSAGKMMRTLITTHPLPLLLPQQLQLVQFQEVDTDFDFPEEDKKEEFEECLEKFFSTGPARPPTKEKV
 KRRVLIIEPGMPLNHI EYCNHEIMGKNVYKHRWVAEHYFLLMQYDELQKICYNRFVPCNGIRKCNRSKG
 LVEGVYCNL TEAFEIPACKYESLYRKG YVLITCSWQNMQKRI PHTINDLVEPPEHRSFLSEGDV FVISP

TRTRPLEQKLISEEDLAANDILDYKDDDDKV



[View online »](#)

Chromatograms: https://cdn.origene.com/chromatograms/mk8006_a09.zip

Restriction Sites: SgfI-MluI

Cloning Scheme:



ACCN: NM_001110360

ORF Size: 630 bp

OTI Disclaimer: The molecular sequence of this clone aligns with the gene accession number as a point of reference only. However, individual transcript sequences of the same gene can differ through naturally occurring variations (e.g. polymorphisms), each with its own valid existence. This clone is substantially in agreement with the reference, but a complete review of all prevailing variants is recommended prior to use. [More info](#)

OTI Annotation: This clone was engineered to express the complete ORF with an expression tag. Expression varies depending on the nature of the gene.

Components: The ORF clone is ion-exchange column purified and shipped in a 2D barcoded Matrix tube containing 10ug of transfection-ready, dried plasmid DNA (reconstitute with 100 ul of water).

Reconstitution Method:

1. Centrifuge at 5,000xg for 5min.
2. Carefully open the tube and add 100ul of sterile water to dissolve the DNA.
3. Close the tube and incubate for 10 minutes at room temperature.
4. Briefly vortex the tube and then do a quick spin (less than 5000xg) to concentrate the liquid at the bottom.
5. Store the suspended plasmid at -20°C. The DNA is stable for at least one year from date of shipping when stored at -20°C.

RefSeq: [NM_001110360.1](#), [NP_001103830.1](#)

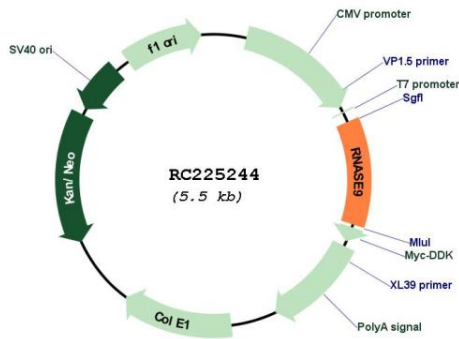
RefSeq ORF: 633 bp

Locus ID: 390443

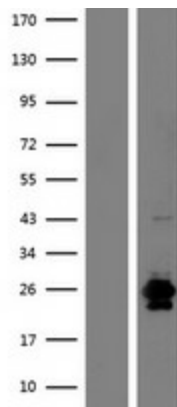
UniProt ID: [P60153](#)

Cytogenetics: 14q11.2
Protein Families: Secreted Protein
MW: 24.6 kDa
Gene Summary: Does not exhibit any ribonuclease activity.[UniProtKB/Swiss-Prot Function]

Product images:



Circular map for RC225244



Western blot validation of overexpression lysate (Cat# [LY426323]) using anti-DDK antibody (Cat# [TA50011-100]). Left: Cell lysates from untransfected HEK293T cells; Right: Cell lysates from HEK293T cells transfected with [RC225248] using transfection reagent MegaTran 2.0 (Cat# [TT210002]).