

Product datasheet for RC225237

MED18 (NM_001127350) Human Tagged ORF Clone

Product data:

Product Type: Expression Plasmids
Product Name: MED18 (NM_001127350) Human Tagged ORF Clone
Tag: Myc-DDK
Symbol: MED18
Synonyms: p28b; SRB5
Mammalian Cell Selection: Neomycin
Vector: pCMV6-Entry (PS100001)
E. coli Selection: Kanamycin (25 ug/mL)
ORF Nucleotide Sequence: >RC225237 ORF sequence
 Red=Cloning site Blue=ORF Green=Tags(s)

TTTTGTAATACGACTCACTATAGGGCGCCGGGAATTCGTCGACTGGATCCGGTACCGAGGAGATCTGCC
 GCC**CGATCGCC**

ATGGAGGCACCTCCAGTCACCATGATGCCTGCTACTGGGGCCACCATTAAACATGATGGAGTACCTGTTGC
 AGGGAAGTGTTTAGATCACAGTTTGGAAAGCCTCATCCACCGCCTTCGTGGTTTGTGTGACAACATGGA
 ACCTGAGACTTTCCTTGACCATGAGATGGTATTCCTCCTTAAGGGCCAGCAAGCCAGCCCATTTGTTCTC
 AGGGCCCAGCCTCTATGGACAGGGCAGGGCCACCTGGCATCTGCGCTACCTGGGACAGCCAGAAATGG
 GAGACAAGAACC GCCATGCCCTGGTGC GAAACTGCGTGGACATTGCCACATCTGAGAACCCTACCGACTT
 CTTGATGGAAATGGGCTTCCGCATGGACCATGAGTTTGTGCTAAGGGACATTTGTTCCGTAAGGGCATC
 ATGAAGATTATGGTGTACAAGATTTCCGCATCCTGGTGC CAGGGAACACAGACAGCACTGAGGCCTTGT
 CACTCTCCTATCTCGTGAATTAAGTGTGGTAGCACCCGCTGGGCAGGACATGGTCTCTGATGACATGAA
 GAACCTCGCAGAACAGCTAAAACCTCTGGTTCACCTAGAGAAAATAGACCCCAAGAGGCTCATG

ACGCGTACGCGGCCGCTCGAGCAGAAACTCATCTCAGAAGAGGATCTGGCAGCAAATGATATCCTGGATT
 ACAAGGATGACGACGATAAGGTTTAA

Protein Sequence: >RC225237 protein sequence
 Red=Cloning site Green=Tags(s)

MEAPPVTMPVTTGGTINMMEYLLQGSVLDHSLES LIHRLRGLCDNMEPETFLDHEMVFLKGGQASPFL
 RARRSMDRAGAPWHLRYLGQPEMGDKNRHALVRNCVDIATSENLTDFLMEMGFRMDHEFVAKGHLFRKGI
 MKIMVYKIFRILVPGNTDSTEALSLSYLVELSVVAPAGQDMVSDDMKNFAEQLKPLVHLEKIDPKRLM

TRTRPLEQKLISEEDLAANDILDYKDDDDKV



[View online »](#)

Chromatograms: https://cdn.origene.com/chromatograms/mk6721_c01.zip

Restriction Sites: SgfI-MluI

Cloning Scheme:



ACCN: NM_001127350

ORF Size: 624 bp

OTI Disclaimer: The molecular sequence of this clone aligns with the gene accession number as a point of reference only. However, individual transcript sequences of the same gene can differ through naturally occurring variations (e.g. polymorphisms), each with its own valid existence. This clone is substantially in agreement with the reference, but a complete review of all prevailing variants is recommended prior to use. [More info](#)

OTI Annotation: This clone was engineered to express the complete ORF with an expression tag. Expression varies depending on the nature of the gene.

Components: The ORF clone is ion-exchange column purified and shipped in a 2D barcoded Matrix tube containing 10ug of transfection-ready, dried plasmid DNA (reconstitute with 100 ul of water).

Reconstitution Method:

1. Centrifuge at 5,000xg for 5min.
2. Carefully open the tube and add 100ul of sterile water to dissolve the DNA.
3. Close the tube and incubate for 10 minutes at room temperature.
4. Briefly vortex the tube and then do a quick spin (less than 5000xg) to concentrate the liquid at the bottom.
5. Store the suspended plasmid at -20°C. The DNA is stable for at least one year from date of shipping when stored at -20°C.

RefSeq: [NM_001127350.2](#)

RefSeq Size: 1813 bp

RefSeq ORF: 627 bp

Locus ID: 54797

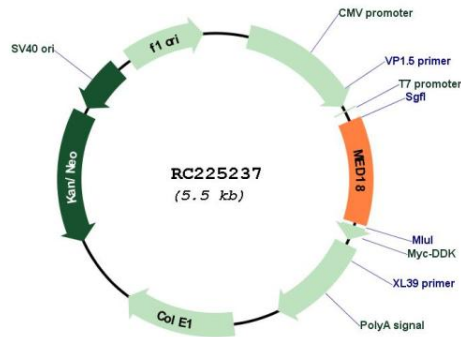
UniProt ID: [Q9BUE0](#)

Cytogenetics: 1p35.3

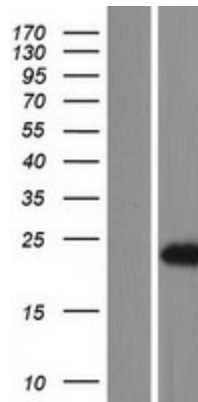
MW: 23.7 kDa

Gene Summary: MED18 is a component of the Mediator complex, which is a coactivator for DNA-binding factors that activate transcription via RNA polymerase II (Sato et al., 2003 [PubMed 12584197]).[supplied by OMIM, Oct 2008]

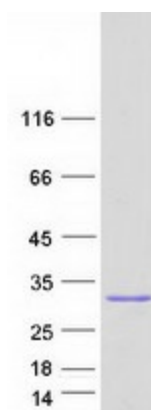
Product images:



Circular map for RC225237



Western blot validation of overexpression lysate (Cat# [LY426751]) using anti-DDK antibody (Cat# [TA50011-100]). Left: Cell lysates from untransfected HEK293T cells; Right: Cell lysates from HEK293T cells transfected with RC225237 using transfection reagent MegaTran 2.0 (Cat# [TT210002]).



Coomassie blue staining of purified MED18 protein (Cat# [TP325237]). The protein was produced from HEK293T cells transfected with MED18 cDNA clone (Cat# RC225237) using MegaTran 2.0 (Cat# [TT210002]).