

## Product datasheet for RC225235

### Vgl4 (VGLL4) (NM\_001128221) Human Tagged ORF Clone

#### Product data:

**Product Type:** Expression Plasmids  
**Product Name:** Vgl4 (VGLL4) (NM\_001128221) Human Tagged ORF Clone  
**Tag:** Myc-DDK  
**Symbol:** Vgl4  
**Synonyms:** VGL-4  
**Mammalian Cell Selection:** Neomycin  
**Vector:** pCMV6-Entry (PS100001)  
**E. coli Selection:** Kanamycin (25 ug/mL)  
**ORF Nucleotide Sequence:** >RC225235 representing NM\_001128221  
 Red=Cloning site Blue=ORF Green=Tags(s)

TTTTGTAATACGACTCACTATAGGGCGGCCGGAATTCGTCGACTGGATCCGGTACCGAGGAGATCTGCC  
 GCCCGCATCGCC

ATGAACAAGACTGCCAATGGAGACTGCCGAGAGACCCCGGGAGCGGAGCCGACGCCCCATCGAGCGCG  
 CTGTGGCCCCACCATGAGCCTGCACGGCAGCCACCTGTACACCTCCCTCCCAGCCTTGGCCTGGAGCA  
 GCCCTCGCACTGACCAAGAAGCAGCCTGGACGCCAGCAGCCAGCCGGCCTCTCGCCACACTGACCCCG  
 GGGGAGCGGCAGCAGAACCGGCCCTCCGTGATCACCTGTGCTCGGCTGGCGCCCGCAACTGCAACTCT  
 CGCACTGCCCCATCGCGCACAGCGGCTGTGCCGCGCCCGGCCTGCCAGTACCGGAGGCCACCGAGCGC  
 TGCCACCACCTGTGACCCGTGGTGGAGGAGCATTCCGCAAGGAGCCTGGCAAGAATTACAAGGAGCCC  
 GAGCCGGCACCAACTCCGTGTCCATCACGGGCTCCGTGGACGACCATTGCCAAAGCTCTGGGTGACA  
 CGTGGCTCCAGATCAAAGCGGCCAAGGACGGAGCATCCAGCAGCCCTGAGTCCGCTCTCGCAGGGGCCA  
 GCCCGCAGCCCTCTGCCACATGGTCAGCCACAGTCACTCCCCCTCTGTGGTCTCC

ACGCGTACGCGGCCGCTCGAGCAGAACTCATCTCAGAAGAGGATCTGGCAGCAATGATATCCTGGATT  
 ACAAGGATGACGACGATAAGGTTTAA

**Protein Sequence:** >RC225235 representing NM\_001128221  
 Red=Cloning site Green=Tags(s)

MNKTANGDCRRDPRERSRSPIERAVPTMSLHGSHLYTSLPSLGLQPLALTKNSLDASRPAGLSPTLTP  
 GERQQRNPSVITCASAGARNLNL SHCPIAHSGCAAPGPASYRRPPSAATTCDPVVEEHFRRSLGKNYKEP  
 EPAPNSVSITGSVDDHFAKALGDTWLQIKAAKDGASSSPESASRRGQPASPSAHMVSHSHSPSVVS

TRTRPLEQKLI SEEDLAANDILDYKDDDDKV

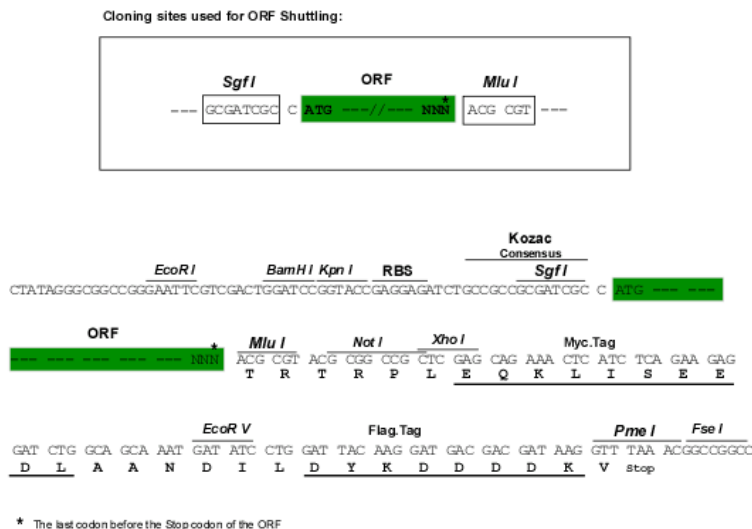


[View online »](#)

**Chromatograms:** [https://cdn.origene.com/chromatograms/ja1466\\_f08.zip](https://cdn.origene.com/chromatograms/ja1466_f08.zip)

**Restriction Sites:** SgfI-MluI

**Cloning Scheme:**



**ACCN:** NM\_001128221

**ORF Size:** 618 bp

**OTI Disclaimer:** The molecular sequence of this clone aligns with the gene accession number as a point of reference only. However, individual transcript sequences of the same gene can differ through naturally occurring variations (e.g. polymorphisms), each with its own valid existence. This clone is substantially in agreement with the reference, but a complete review of all prevailing variants is recommended prior to use. [More info](#)

**OTI Annotation:** This clone was engineered to express the complete ORF with an expression tag. Expression varies depending on the nature of the gene.

**Components:** The ORF clone is ion-exchange column purified and shipped in a 2D barcoded Matrix tube containing 10ug of transfection-ready, dried plasmid DNA (reconstitute with 100 ul of water).

**Reconstitution Method:**

1. Centrifuge at 5,000xg for 5min.
2. Carefully open the tube and add 100ul of sterile water to dissolve the DNA.
3. Close the tube and incubate for 10 minutes at room temperature.
4. Briefly vortex the tube and then do a quick spin (less than 5000xg) to concentrate the liquid at the bottom.
5. Store the suspended plasmid at -20°C. The DNA is stable for at least one year from date of shipping when stored at -20°C.

**RefSeq:** [NM\\_001128221.3](#)

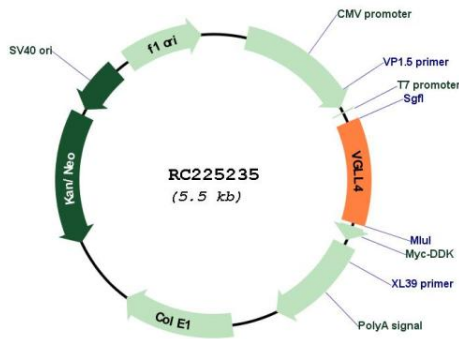
**RefSeq ORF:** 621 bp

**Locus ID:** 9686

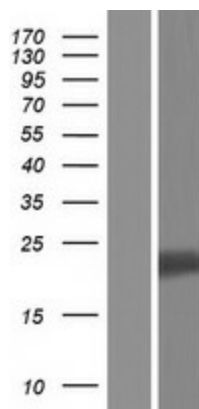
**UniProt ID:** [Q14135](#)

**Cytogenetics:** 3p25.3-p25.2  
**Protein Families:** Transcription Factors  
**MW:** 21.5 kDa  
**Gene Summary:** May act as a specific coactivator for the mammalian TEFs.[UniProtKB/Swiss-Prot Function]

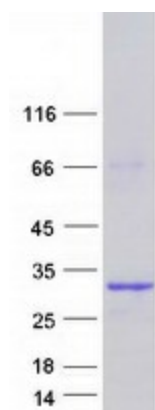
**Product images:**



Circular map for RC225235



Western blot validation of overexpression lysate (Cat# [LY426933]) using anti-DDK antibody (Cat# [TA50011-100]). Left: Cell lysates from untransfected HEK293T cells; Right: Cell lysates from HEK293T cells transfected with RC225235 using transfection reagent MegaTran 2.0 (Cat# [TT210002]).



Coomassie blue staining of purified VGLL4 protein (Cat# [TP325235]). The protein was produced from HEK293T cells transfected with VGLL4 cDNA clone (Cat# RC225235) using MegaTran 2.0 (Cat# [TT210002]).