

## Product datasheet for RC225232

### CEP27 (HAUS2) (NM\_001130447) Human Tagged ORF Clone

#### Product data:

Product Type:	Expression Plasmids
Product Name:	CEP27 (HAUS2) (NM_001130447) Human Tagged ORF Clone
Tag:	Myc-DDK
Symbol:	CEP27
Synonyms:	C15orf25; CEP27; HsT17025
Mammalian Cell Selection:	Neomycin
Vector:	pCMV6-Entry (PS100001)
E. coli Selection:	Kanamycin (25 ug/mL)
ORF Nucleotide Sequence:	>RC225232 representing NM_001130447 Red=Cloning site Blue=ORF Green=Tags(s)

TTTTGTAATACGACTCACTATAGGGCGGCCGGAATTCGTCGACTGGATCCGGTACCGAGGAGATCTGCC  
GCC**CGATCGCC**

ATGGCCGCTGCCAACCCGTGGGACCCGGCGTCCGCGCCTAACGGCGCTGGGCTAGTGCTAGGCCACTTCA  
TAGCTTCGGGGATGGTCAATCAGAAAACTGGAAATTGAACTCCTGAACTAGAAAAAGATACAGCAGA  
TGTTGTCATCCTTTCTTTTGGCTCAGAAGTGCATACTCTGCAAAGCATGAATAATCATTGGAAAGCA  
GTGCTGAAAGAGAAGAGATCCCTTAGGCAAAGACTGTTGAAACCCATGTGCCAGGAAAACCTACCTATTG  
AAGCTGTTTATCACAGATATATGGTACATTTGCTGGAGTTGGCTGTGACTTTCATTGAGAGATTAGAAAC  
CCACCTTGAAACAATTAGAAATATTCTCATTAGCTGCAAATCTAAAGAAAATGAACCAGGCTTTAGCA  
AAGATGGATATATTGGTACTGAGACAGAAGAACTGGCAGAGAATACTCAAGTGGCGTAAACAACAAA  
ACGAAGTTTCGTCTTGTATCCCCAAAATATTAGCTGAAGAAAGTTATCTTTATAAACATGATATTATAAT  
GCCTCCTTACCTTTTACTTCTAAAGTTCATGTCCAAACTATTAATGCCAAG

**ACGCGT**ACGCGGCCGCTCGAGCAGAACTCATCTCAGAAGAGGATCTGGCAGCAAATGATATCCTGGATT  
ACAAGGATGACGACGATAAGGTTTAA

Protein Sequence:	>RC225232 representing NM_001130447 Red=Cloning site Green=Tags(s)
-------------------	---

MAAANPWPASAPNGAGLVLGHFIASGMVNQKNLEIELLLEKDTADVHPFFLAQKCHTLQSMNNHLEA  
VLKEKRSRLRQLLKPMCQENLPIEAVYHRVMVHLLLELAVTFIERLETHLETIRNIPHLAANLKKMNQALA  
KMDILVTETEELAENILKWRKQQNEVSSCIPKILAEESYLKHDIMPPLPFTSKVHVQTINAK

**TRTRPLEQKLI**SEEDLAANDILDYKDDDDKV



[View online »](#)

**Chromatograms:** [https://cdn.origene.com/chromatograms/ja1464\\_f09.zip](https://cdn.origene.com/chromatograms/ja1464_f09.zip)

**Restriction Sites:** SgfI-MluI

**Cloning Scheme:**



**ACCN:** NM\_001130447

**ORF Size:** 612 bp

**OTI Disclaimer:** The molecular sequence of this clone aligns with the gene accession number as a point of reference only. However, individual transcript sequences of the same gene can differ through naturally occurring variations (e.g. polymorphisms), each with its own valid existence. This clone is substantially in agreement with the reference, but a complete review of all prevailing variants is recommended prior to use. [More info](#)

**OTI Annotation:** This clone was engineered to express the complete ORF with an expression tag. Expression varies depending on the nature of the gene.

**Components:** The ORF clone is ion-exchange column purified and shipped in a 2D barcoded Matrix tube containing 10ug of transfection-ready, dried plasmid DNA (reconstitute with 100 ul of water).

**Reconstitution Method:**

1. Centrifuge at 5,000xg for 5min.
2. Carefully open the tube and add 100ul of sterile water to dissolve the DNA.
3. Close the tube and incubate for 10 minutes at room temperature.
4. Briefly vortex the tube and then do a quick spin (less than 5000xg) to concentrate the liquid at the bottom.
5. Store the suspended plasmid at -20°C. The DNA is stable for at least one year from date of shipping when stored at -20°C.

**RefSeq:** [NM\\_001130447.2](#)

**RefSeq ORF:** 615 bp

**Locus ID:** 55142

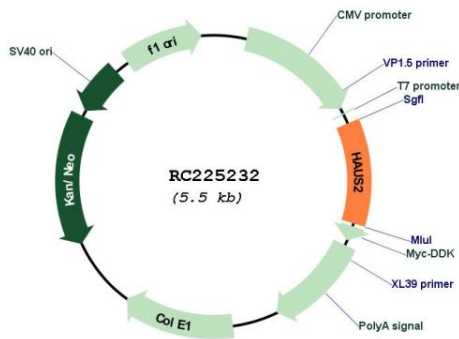
**UniProt ID:** [Q9NVX0](#)

**Cytogenetics:** 15q15.2

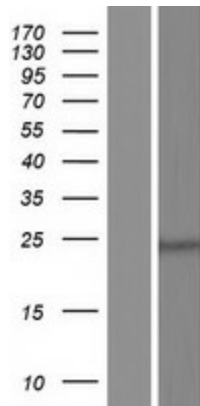
**MW:** 23.1 kDa

**Gene Summary:** The protein encoded by this gene is a subunit of the augmin complex. The augmin complex plays a role in microtubule attachment to the kinetochore and central spindle formation. [provided by RefSeq, Apr 2016]

**Product images:**



Circular map for RC225232



Western blot validation of overexpression lysate (Cat# [LY427213]) using anti-DDK antibody (Cat# [TA50011-100]). Left: Cell lysates from untransfected HEK293T cells; Right: Cell lysates from HEK293T cells transfected with RC225232 using transfection reagent MegaTran 2.0 (Cat# [TT210002]).