

Product datasheet for **RC225229**

CRLS1 (NM_001127458) Human Tagged ORF Clone

Product data:

Product Type: Expression Plasmids
Product Name: CRLS1 (NM_001127458) Human Tagged ORF Clone
Tag: Myc-DDK
Symbol: CRLS1
Synonyms: C20orf155; CLS; CLS1; dj967N21.6; GCD10
Mammalian Cell Selection: Neomycin
Vector: pCMV6-Entry (PS100001)
E. coli Selection: Kanamycin (25 ug/mL)
ORF Nucleotide Sequence: >RC225229 representing NM_001127458
Red=Cloning site Blue=ORF Green=Tags(s)

TTTTGTAATACGACTCACTATAGGGCGGCCGGAATTCGTCGACTGGATCCGGTACCGAGGAGATCTGCC
GCC**CGATCGCC**

ATGCCACAGTATGAAAACCCATGGACAATCCCGAATATGTTGTCAATGACGAGAATTGGCTTGGCCCCAG
TTCTGGGCTATTTGATTATTGAAGAAGATTTAATATTGCACTAGGAGTTTTGCTTTAGCTGGACTAAC
AGATTTGTTGGATGGATTTATTGCTCGAACTGGCCAATCAAAGATCAGCTTTGGGAAGTCTCTTGAT
CCACTTGCTGATAAAATACTTATCAGTATCTTATATGTTAGCTTGACCTATGCAGATCTTATTCCAGTTC
CACTTACTTACATGATCATTTTCGAGAGATGTAATGTTGATTGCTGCTGTTTTTTATGTCAGATACCGAAC
TCTTCAAACACCACGAACACTTGCCAAGTATTTCAATCCTTGCTATGCCACTGCTAGGTTAAAACCAACA
TTCATCAGCAAGGTGAATACAGCAGTCCAGTAACTCTGGTGGCAGCTTCTTTGGCAGCTCCAGTTTTCA
ACTATGCTGACAGCATTATCTTCAGATACTATGGTGTTTTACAGCTTTCCACCACAGCTGCATCAGCTTA
TAGTTACTATCATTATGGCCGGAAGACTGTTCCAGGTGATAAAAGAC

ACGCGTACGCGGCCGCTCGAGCAGAACTCATCTCAGAAGAGGATCTGGCAGCAAATGATATCCTGGATT
ACAAGGATGACGACGATAAGGTTTAA

Protein Sequence: >RC225229 representing NM_001127458
Red=Cloning site Green=Tags(s)

MPQYENPWTIPNLSMTRIGLAPVLGYLIEEDFNIALGVFALAGLTDLLDGF IARNWANQRSALGSALD
PLADKILISILYVSLTYADLIPVPLTYMIISRDVMLIAAVFYVRYRTLPTPRTLAKYFNPCYATARLKPT
FISKVNTAVQLILVAASLAAPVFNYADSIYLQILWCFTAFTTAASAYSYYHYGRKTVQVIKD

TRTRPLEQKLISEEDLAANDILDYKDDDDKV



[View online »](#)

Chromatograms: https://cdn.origene.com/chromatograms/ja1464_f05.zip

Restriction Sites: SgfI-MluI

Cloning Scheme:



ACCN: NM_001127458

ORF Size: 606 bp

OTI Disclaimer: The molecular sequence of this clone aligns with the gene accession number as a point of reference only. However, individual transcript sequences of the same gene can differ through naturally occurring variations (e.g. polymorphisms), each with its own valid existence. This clone is substantially in agreement with the reference, but a complete review of all prevailing variants is recommended prior to use. [More info](#)

OTI Annotation: This clone was engineered to express the complete ORF with an expression tag. Expression varies depending on the nature of the gene.

Components: The ORF clone is ion-exchange column purified and shipped in a 2D barcoded Matrix tube containing 10ug of transfection-ready, dried plasmid DNA (reconstitute with 100 ul of water).

Reconstitution Method:

1. Centrifuge at 5,000xg for 5min.
2. Carefully open the tube and add 100ul of sterile water to dissolve the DNA.
3. Close the tube and incubate for 10 minutes at room temperature.
4. Briefly vortex the tube and then do a quick spin (less than 5000xg) to concentrate the liquid at the bottom.
5. Store the suspended plasmid at -20°C. The DNA is stable for at least one year from date of shipping when stored at -20°C.

RefSeq: [NM_001127458.2](#)

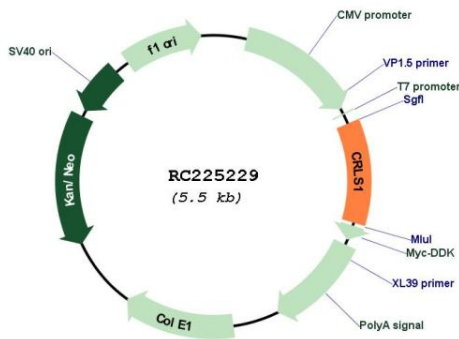
RefSeq ORF: 609 bp

Locus ID: 54675

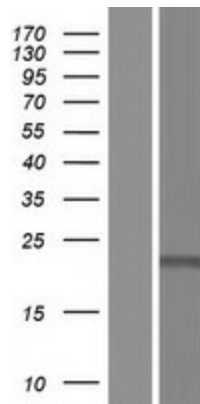
UniProt ID: [Q9UJA2](#)

Cytogenetics: 20p12.3
Protein Families: Transmembrane
Protein Pathways: Glycerophospholipid metabolism, Metabolic pathways
MW: 22.4 kDa
Gene Summary: This gene encodes a member of the CDP-alcohol phosphatidyltransferase class-I family of proteins. The encoded enzyme catalyzes the synthesis of cardiolipin, a phospholipid component of mitochondrial membranes that is critical for mitochondrial function. [provided by RefSeq, Apr 2016]

Product images:



Circular map for RC225229



Western blot validation of overexpression lysate (Cat# [LY426793]) using anti-DDK antibody (Cat# [TA50011-100]). Left: Cell lysates from untransfected HEK293T cells; Right: Cell lysates from HEK293T cells transfected with RC225229 using transfection reagent MegaTran 2.0 (Cat# [TT210002]).